



Presentation to

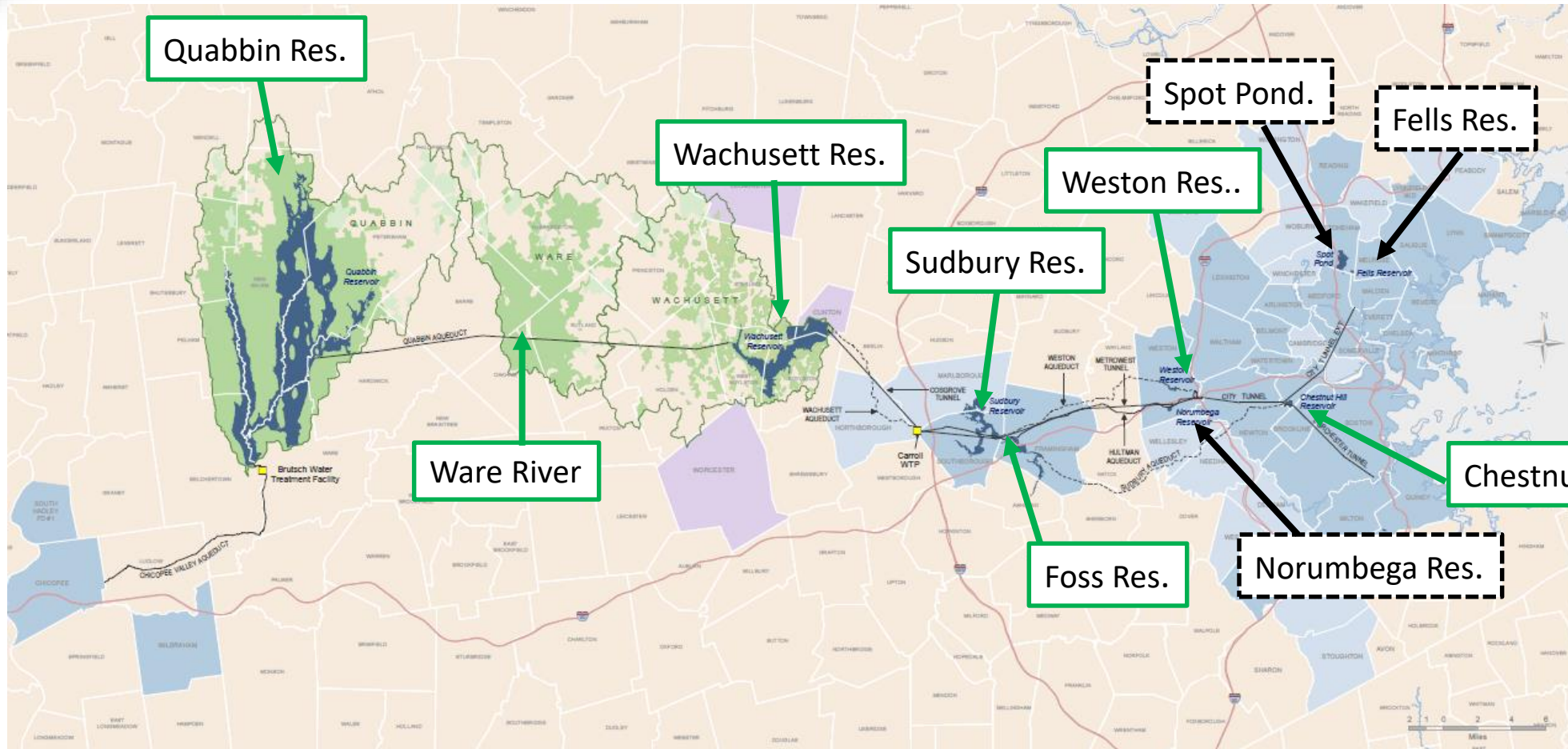
WSCAC

Update on Reservoirs' Aquatic Invasive Plants Control

14 February 2023



Aquatic Invasive Control at MWRA Reservoirs



Eurasian milfoil



Variable milfoil



Fanwort

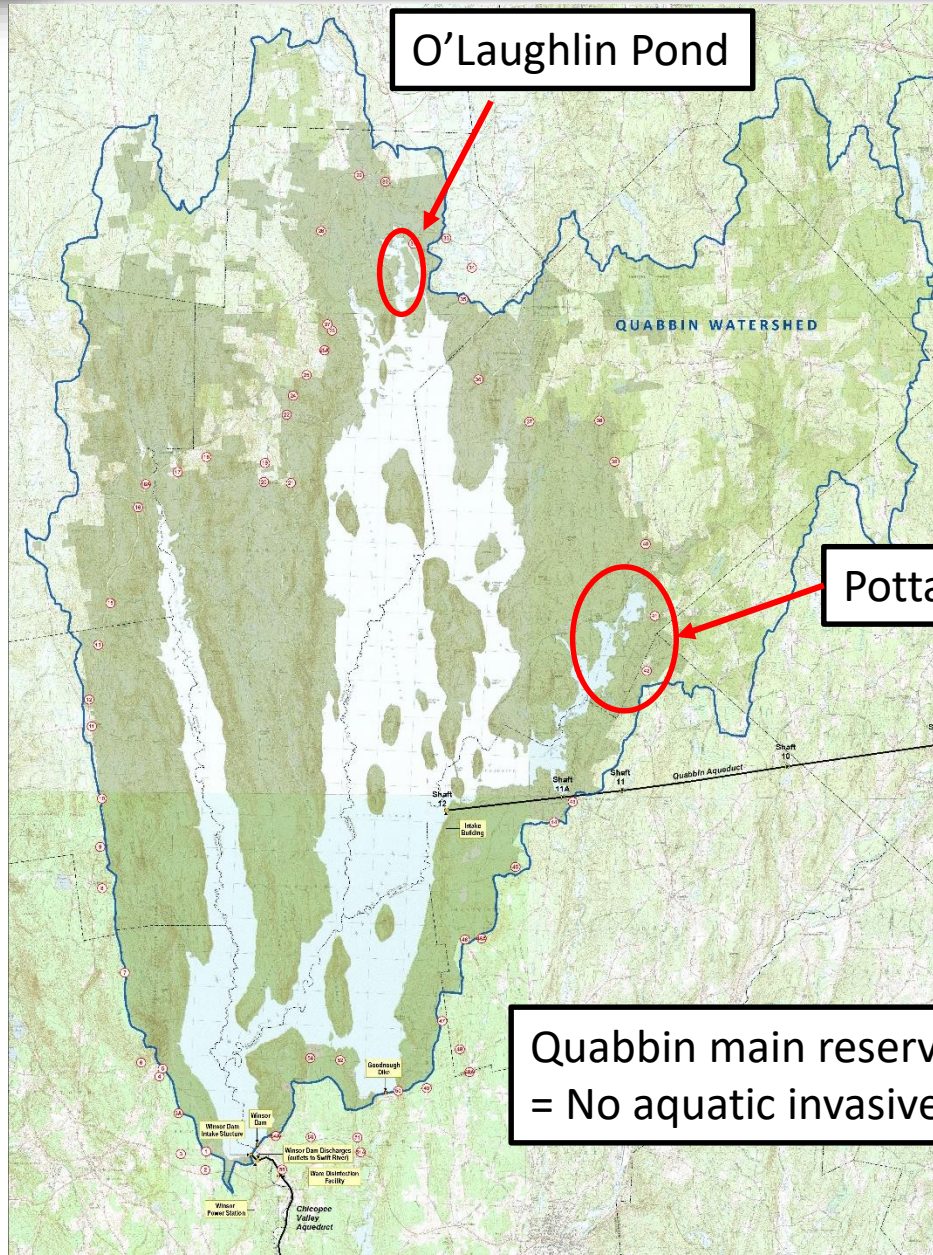


Water Chestnut





Quabbin VLM locations kept in check

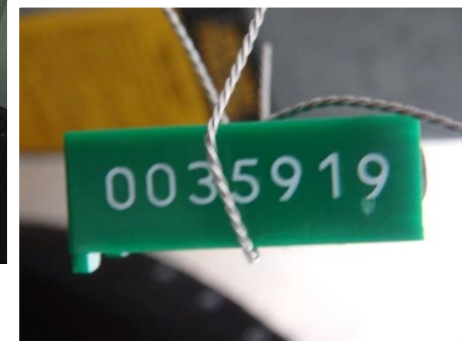


Upstream regulating ponds and aquatic invasive fragment barriers



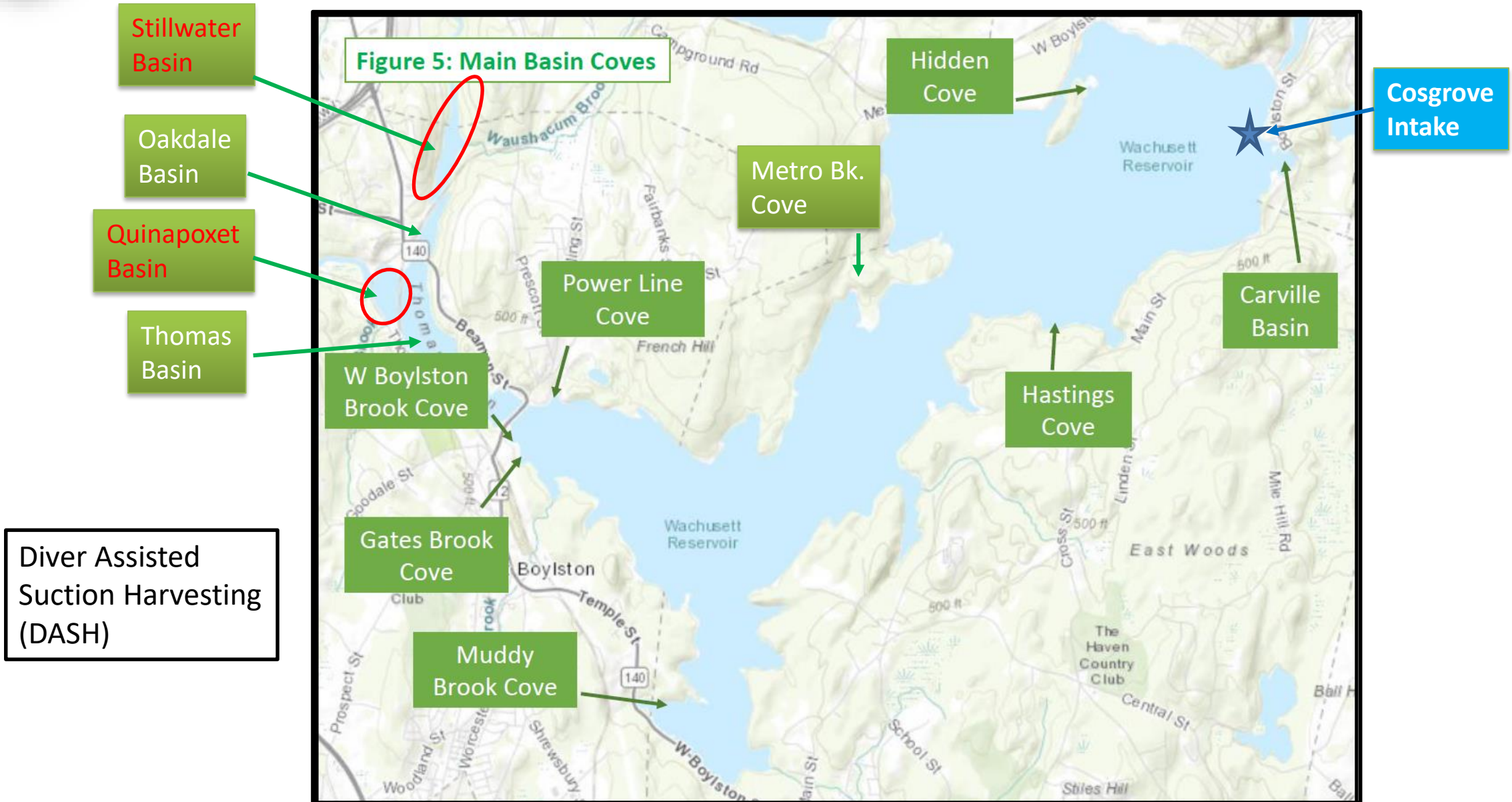


Quabbin Boat Decon and Seal Program



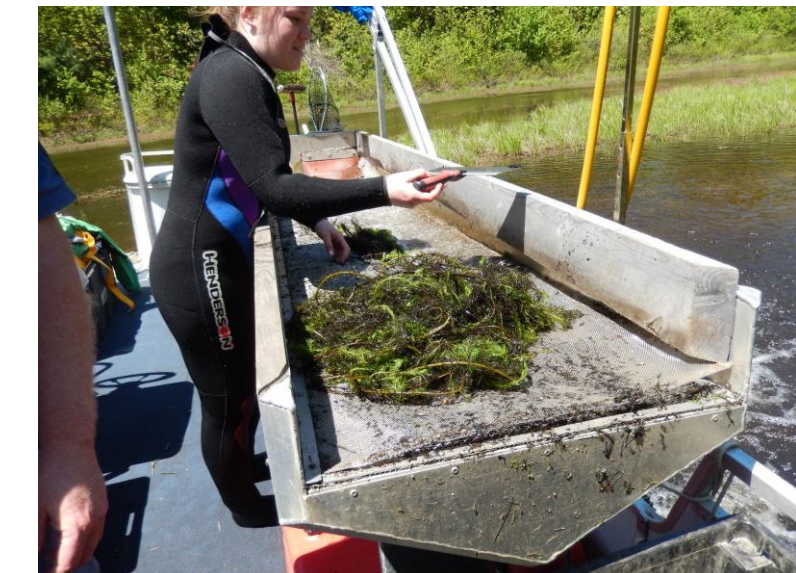


Wachusett Reservoir: Most intensive efforts to date



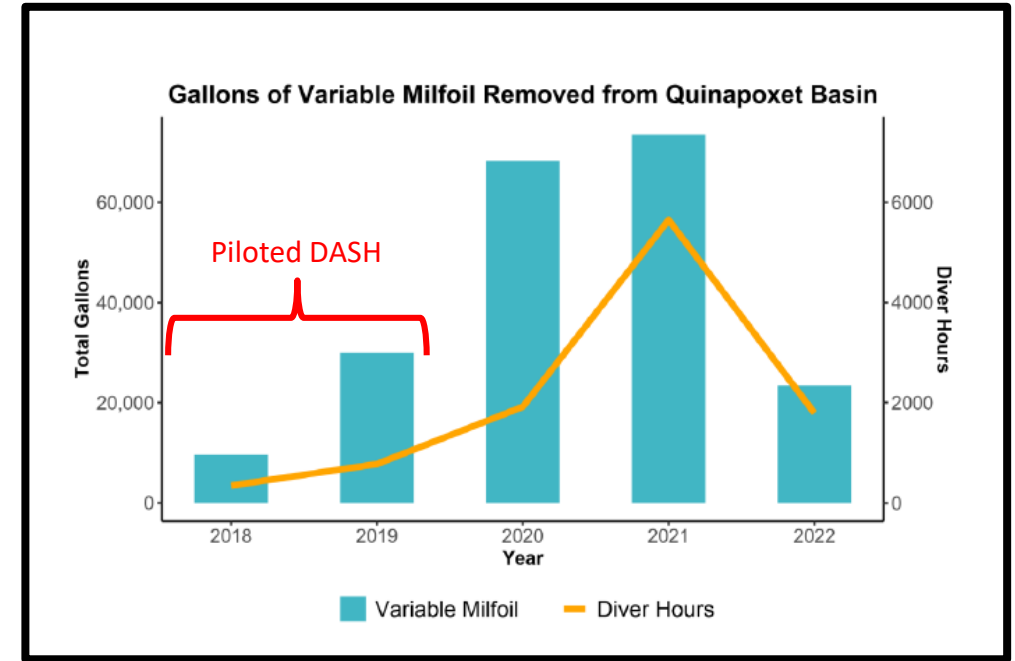
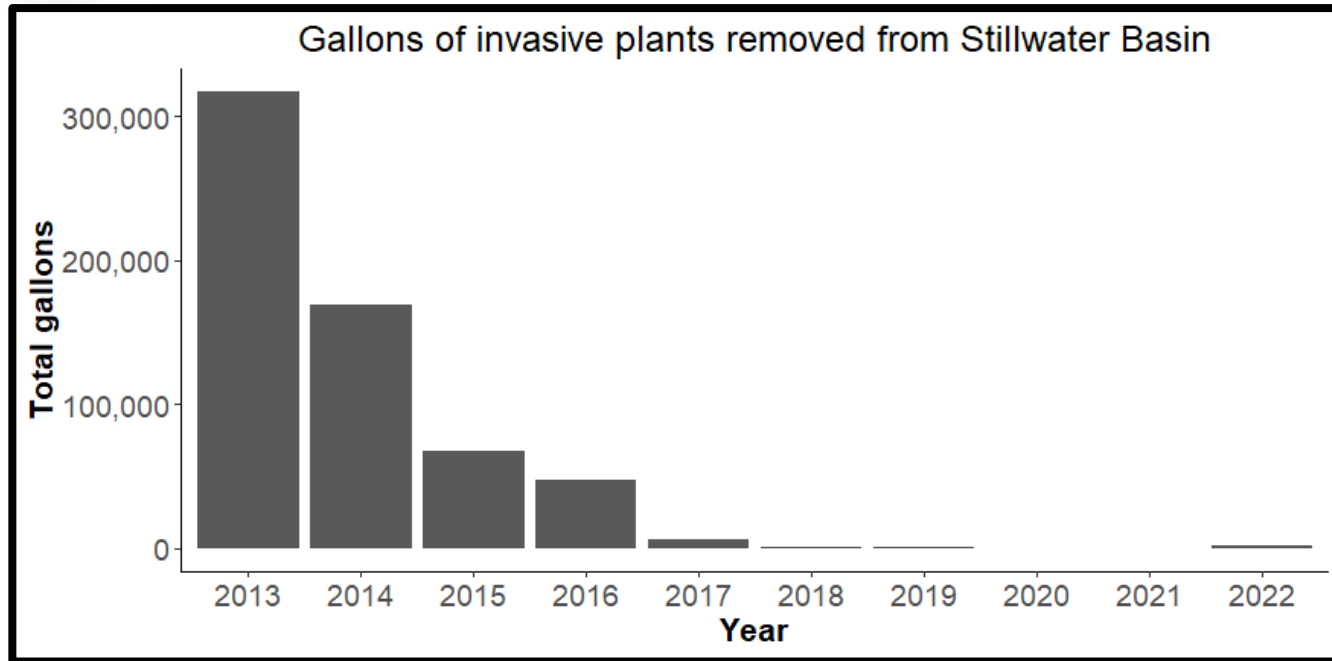


DASH Operation





Wachusett Reservoir Stillwater and Quini Basins DASH progress and return of native plants



Before DASH – Heavy EWM



Post-DASH removal



2016 Native plants filling in



2022 Abundant return of natives



Emergency Reservoirs Aquatic Invasives Control Projects

Chestnut Hill Reservoir Mechanical Control and winter drawdown (**Eurasian milfoil**)



Foss Reservoir manual control and winter drawdown (**Eurasian Milfoil, Water Chestnut**)

Ware River /Shaft 8 Intake Pool Manual Control (**Variable milfoil**)



Sudbury Reservoir DASH and manual control (**Fanwort, Water Chestnut**)



Weston Reservoir DASH (**Eurasian Milfoil**)

