

DEPARTMENT OF CONSERVATION & RECREATION

Division of Water Supply Protection

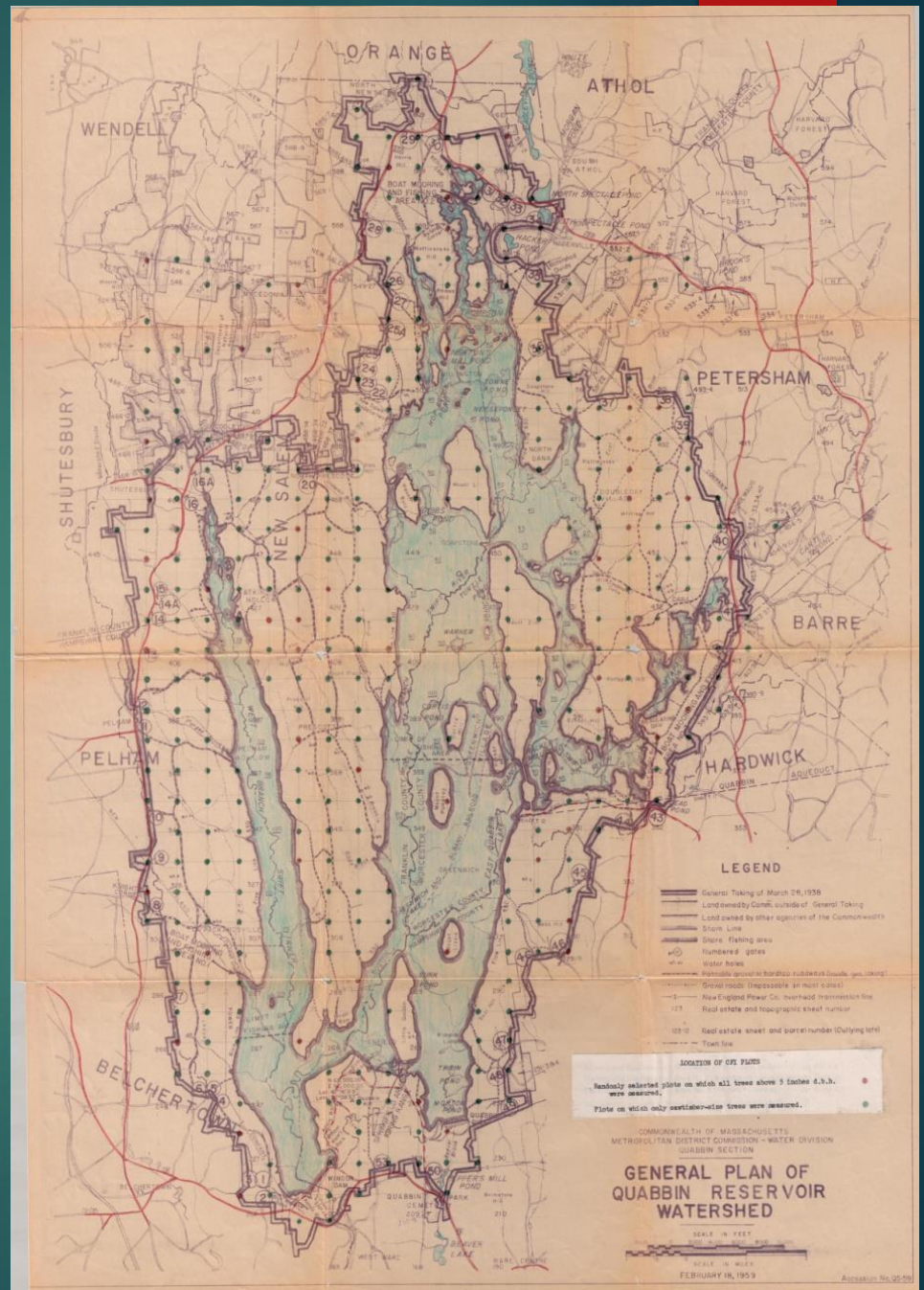


Continuous Forest Inventory Update: 60 Years of Tree Measurements on
DWSP Watershed Lands

Water Supply Citizens Advisory Committee, November 9, 2021

“Forest Resources on Metropolitan District Commission Lands Surrounding Quabbin Reservoir”

- Masters Thesis, UMass 1961
- Fred Hunt
- Established CFI based on State/USFS model
- ½ mile grid spacing
- Each 1/5-acre plot ‘represents’ 160 acres (giving a sampling rate of 1/800 or 0.00125)

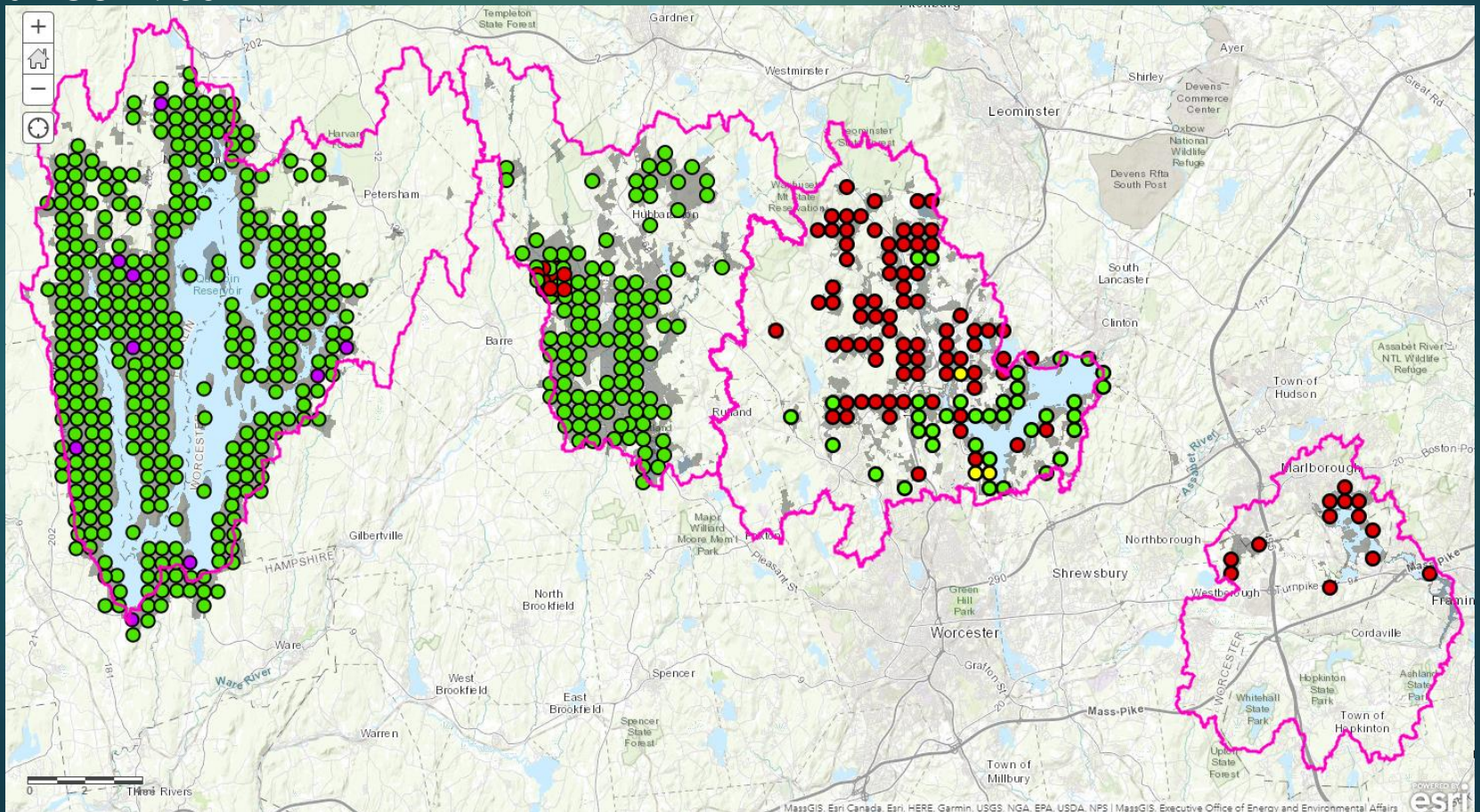


Continuous Forest Inventory

Quabbin: 364 plots, most sampled since 1960

Ware River: 112 plots, most sampled since 1962

Wachusett/Sudbury: 130 plots newly established and sampled beginning July 2021



Continuous Forest Inventory

- ▶ QWR CFI data collection completed
 - ▶ Ware River: 112 plots visited between December 2019 and April 2020
 - ▶ Quabbin: 364 plots visited between June 2020 and March 2021
 - ▶ Three seasonal Forestry Assistants teamed with Foresters for three consecutive seasons; should repeat in 2029
 - ▶ COVID safety protocols enforced
- ▶ Wachusett/Sudbury 2021



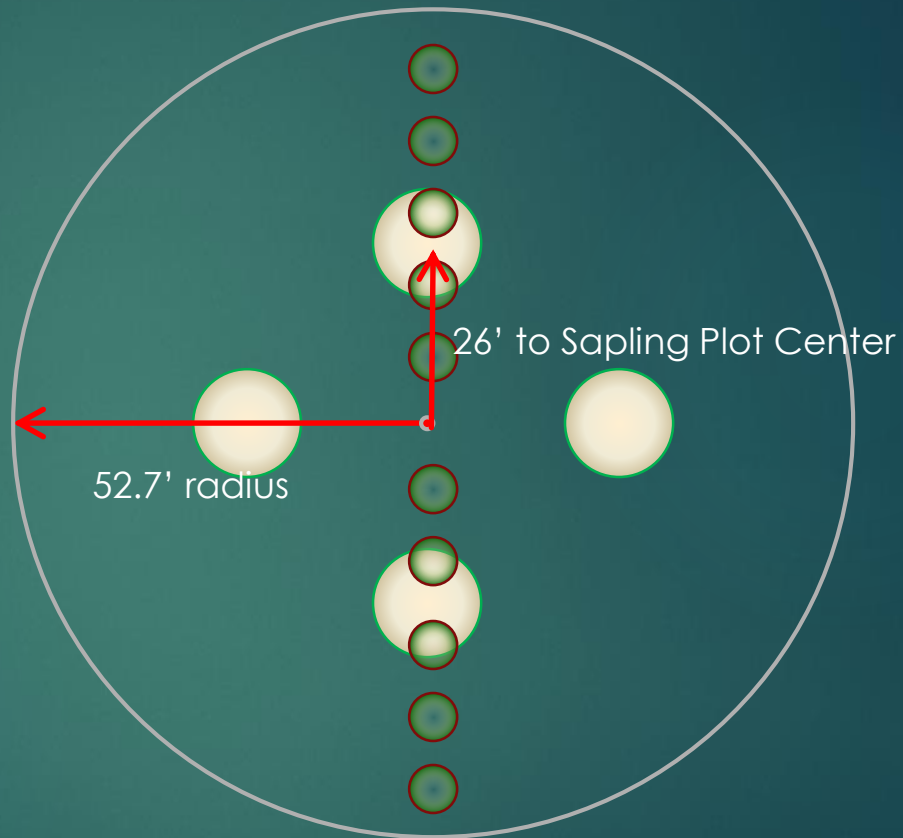
Continuous Forest Inventory (CFI) Plot Design Details

- Circular fixed 0.2-acre plot (52.7' radius)
- Located on $\sim\frac{1}{2}$ mile grid
- Permanently staked center point
- TREES: Number (with paint) and collect data for all trees larger than 5.6" DBH within plot

- SAPLINGS (since 2000): Four 6-foot radius plots, centered 26 feet from plot center in each cardinal direction

- Record # of stems 1" DBH to 5.5" DBH, by species

- REGENERATION (since 1990): Ten $\frac{1}{1000}$ th acre plots, 10 feet apart, N-S
- Record species of two tallest stems $>1'$ tall up to 1" Diameter



CFI Plot Level Data

- ▶ Plot Number – NOT unimportant at Quabbin!
- ▶ Location (Lat + Long)
- ▶ Slope and Aspect
- ▶ Terrain Position
- ▶ Cover Type
- ▶ Land Use
- ▶ Disturbances
- ▶ Interfering plants
- ▶ Invasive plants
- ▶ Browse
- ▶ Non-forest area



Individual plot tree maps

WARE RIVER CONTINUOUS FOREST INVENTORY – PLOT LEVEL DATA – 2019

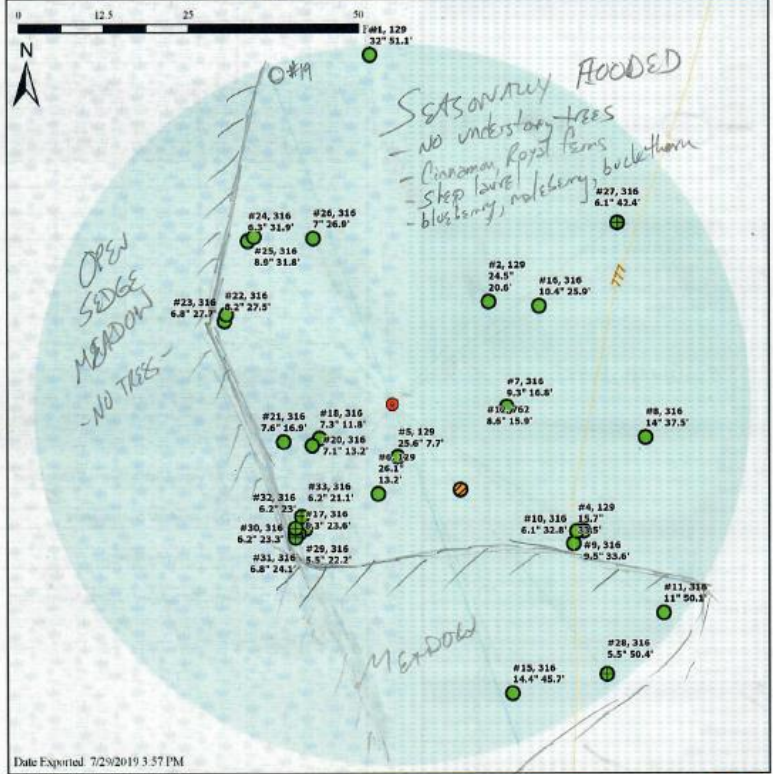


2009 Ware River CFI Tree Map -- Plot 68



DCR - Division of Water Supply Protection
Office of Watershed Management

● CFI Plot Centre	— Other (Right-of-Way for Utility and Other Vehicles)	● New, ingrowth	● Dead, down, sound
— Power Wall	— Trail (No Vehicle Access)	● Live repeat	● Dead, down, part dec.
— Public Road (Open to Public Vehicles)	● Unfilled	● St. dead, sound	● Dead, down, decayed
— Administration Road (DCR Only Access to Facility)	● Potential	● St. dead, part dec.	● Harvested, missing from plot
— Forest Road - Trail (Closed to Public Vehicle)	● Not a Plot	● St. dead, decayed	● Unknown, other
	● Bridge		

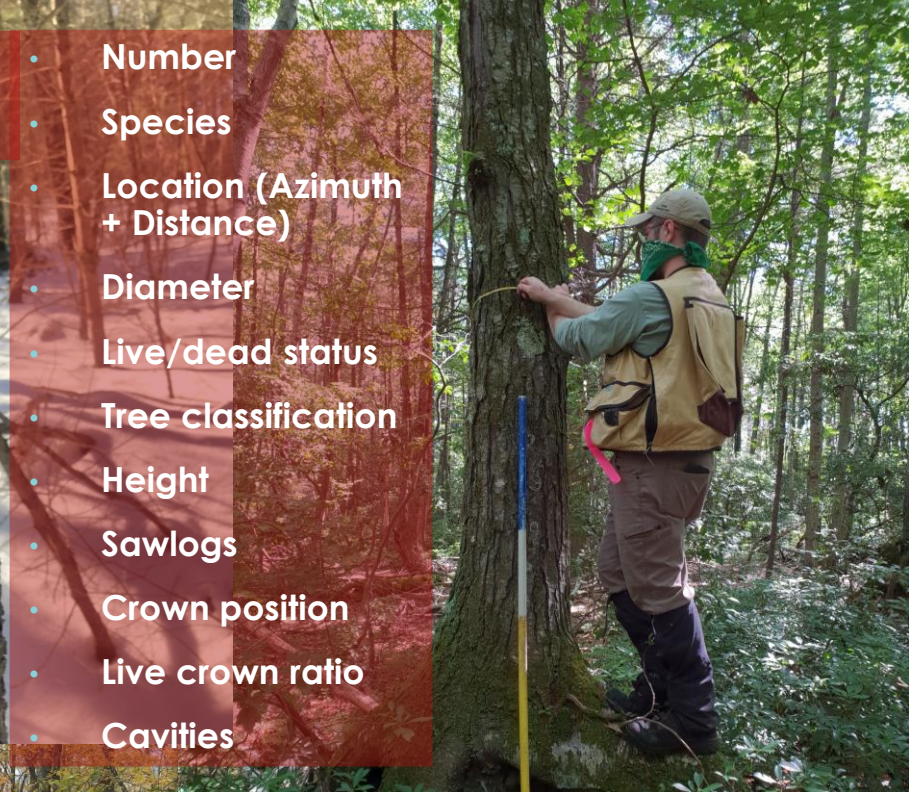


Date Expired: 7/29/2019 3:57 PM



CFI Tree Level Data

- Number
- Species
- Location (Azimuth + Distance)
- Diameter
- Live/dead status
- Tree classification
- Height
- Sawlogs
- Crown position
- Live crown ratio
- Cavities



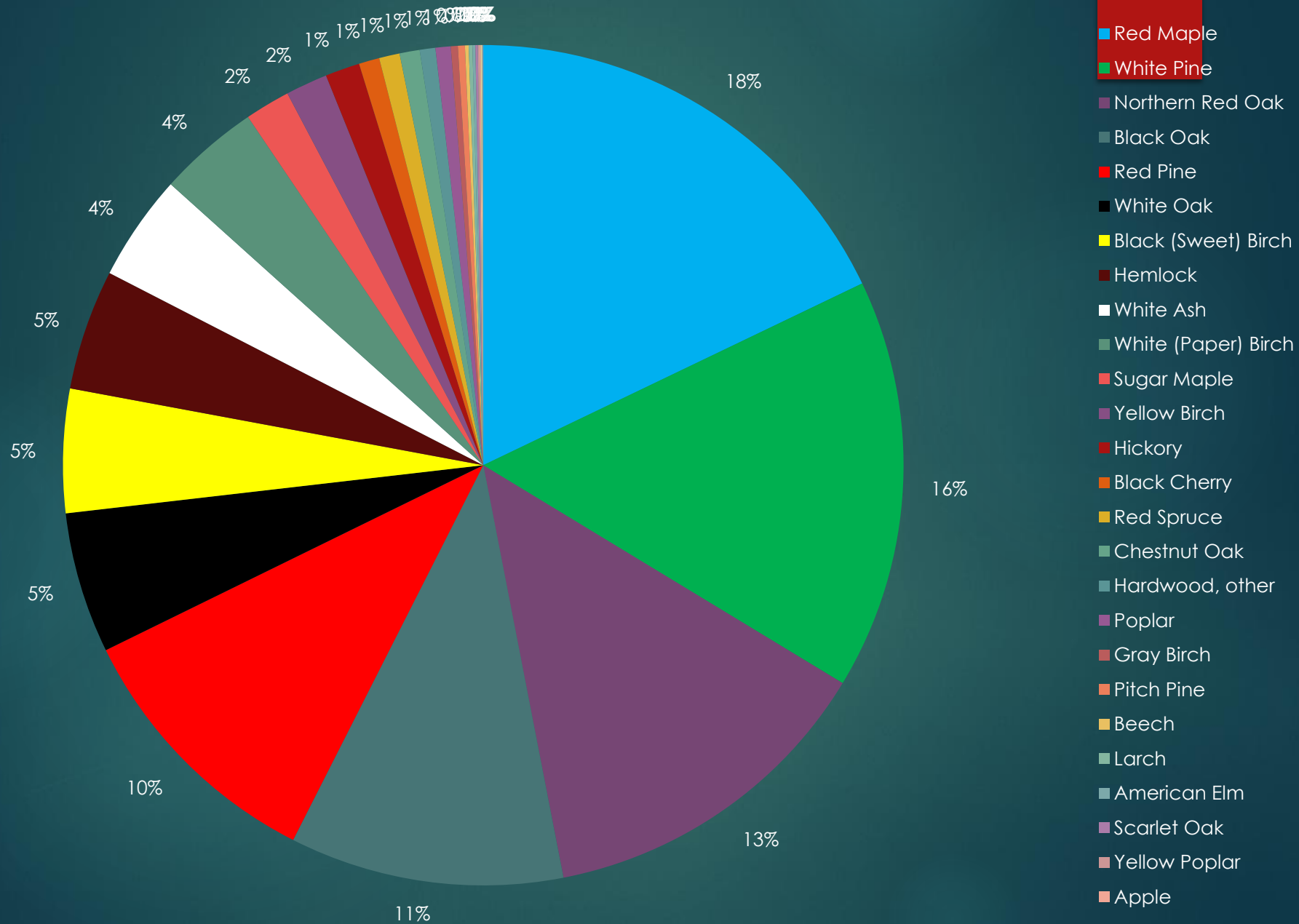
A photograph of a forest floor covered in brown, fallen leaves. A tree trunk is visible in the center, with a measuring tape wrapped around it. The background shows more trees and foliage.

What trends are indicated in Quabbin CFI about future forest species composition?

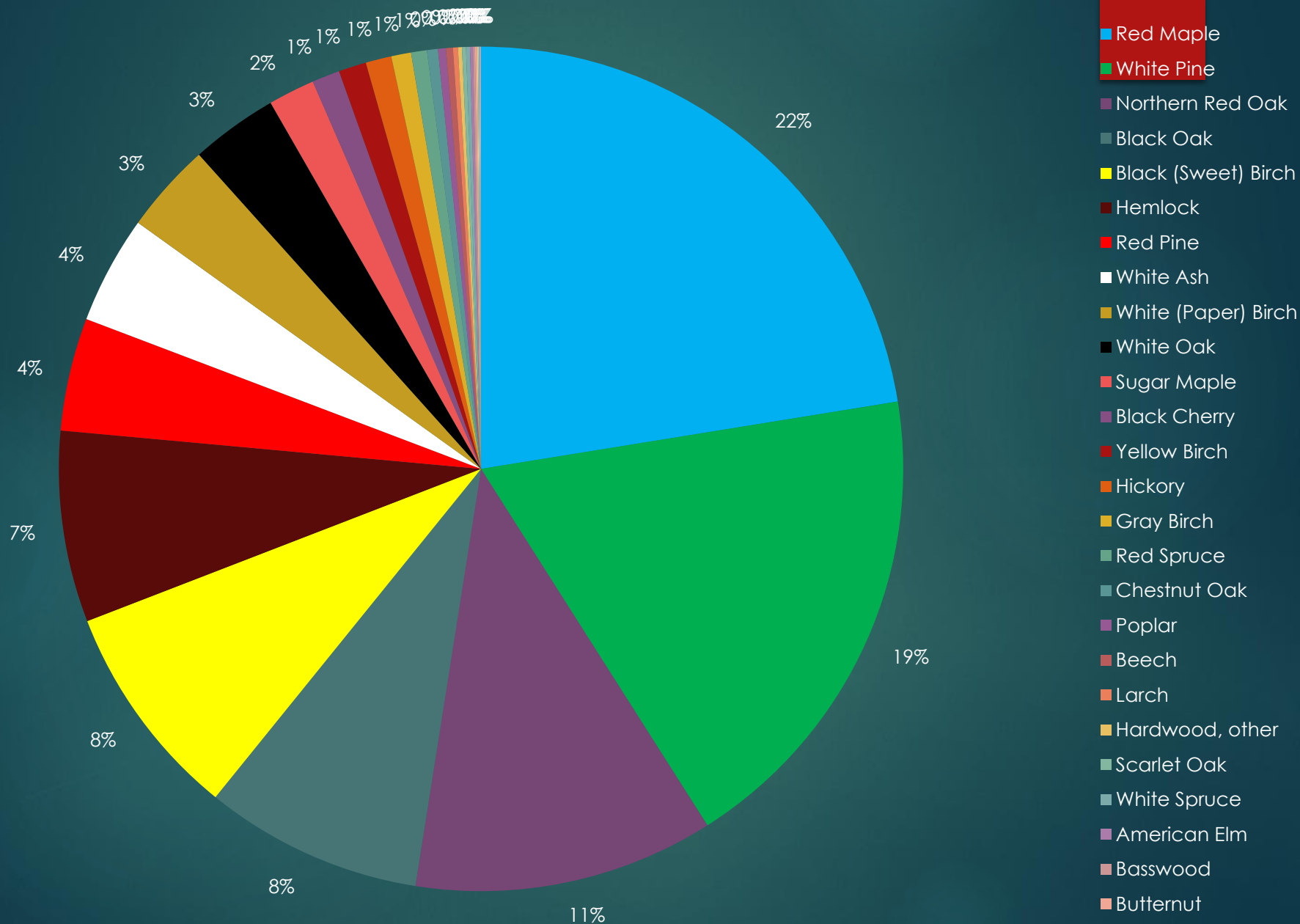
Examine “Ingrowth” by species

- New live trees
- Minimum 5.6” diameter

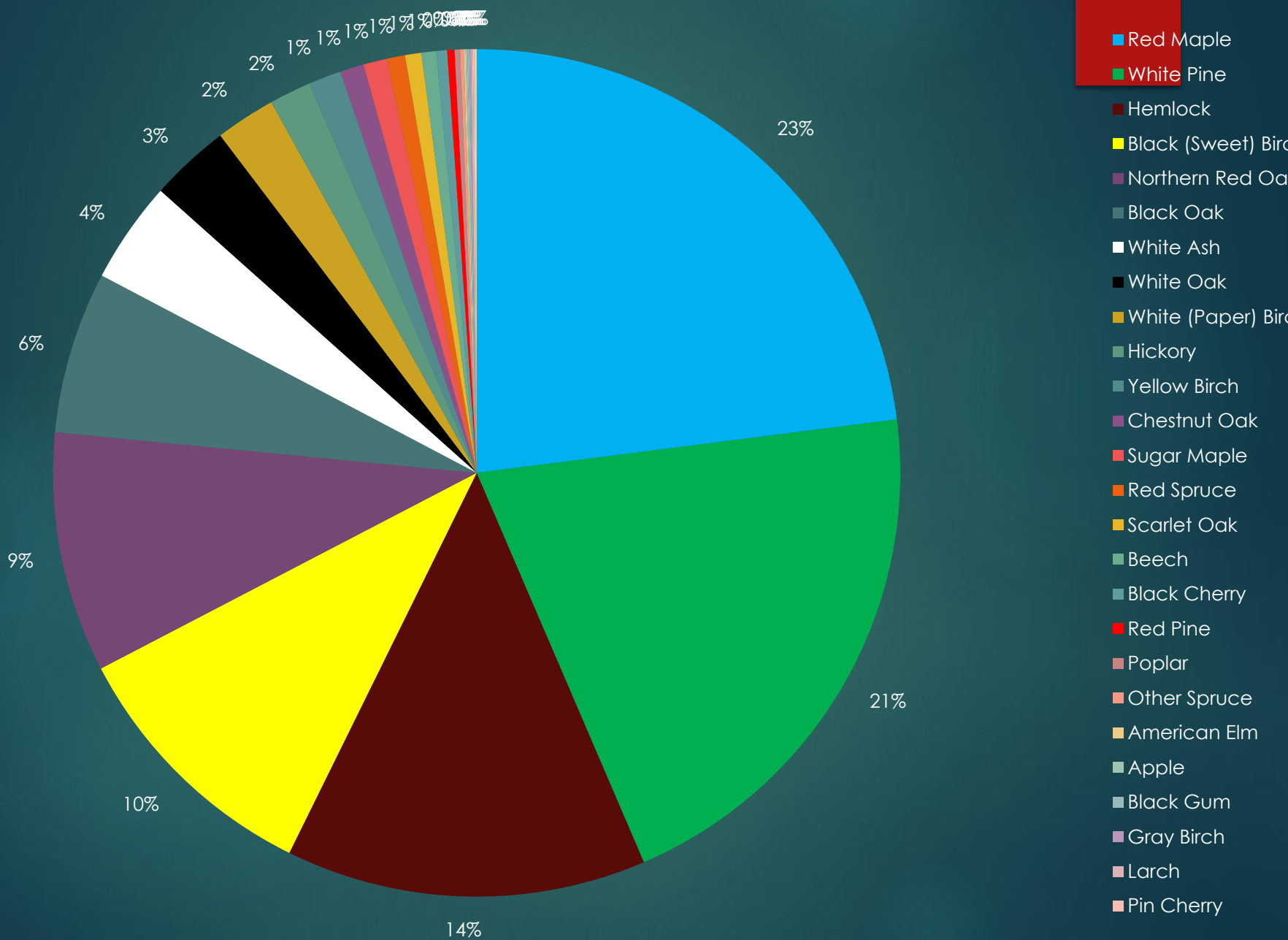
Percentage of "New" Trees By Species - 1970



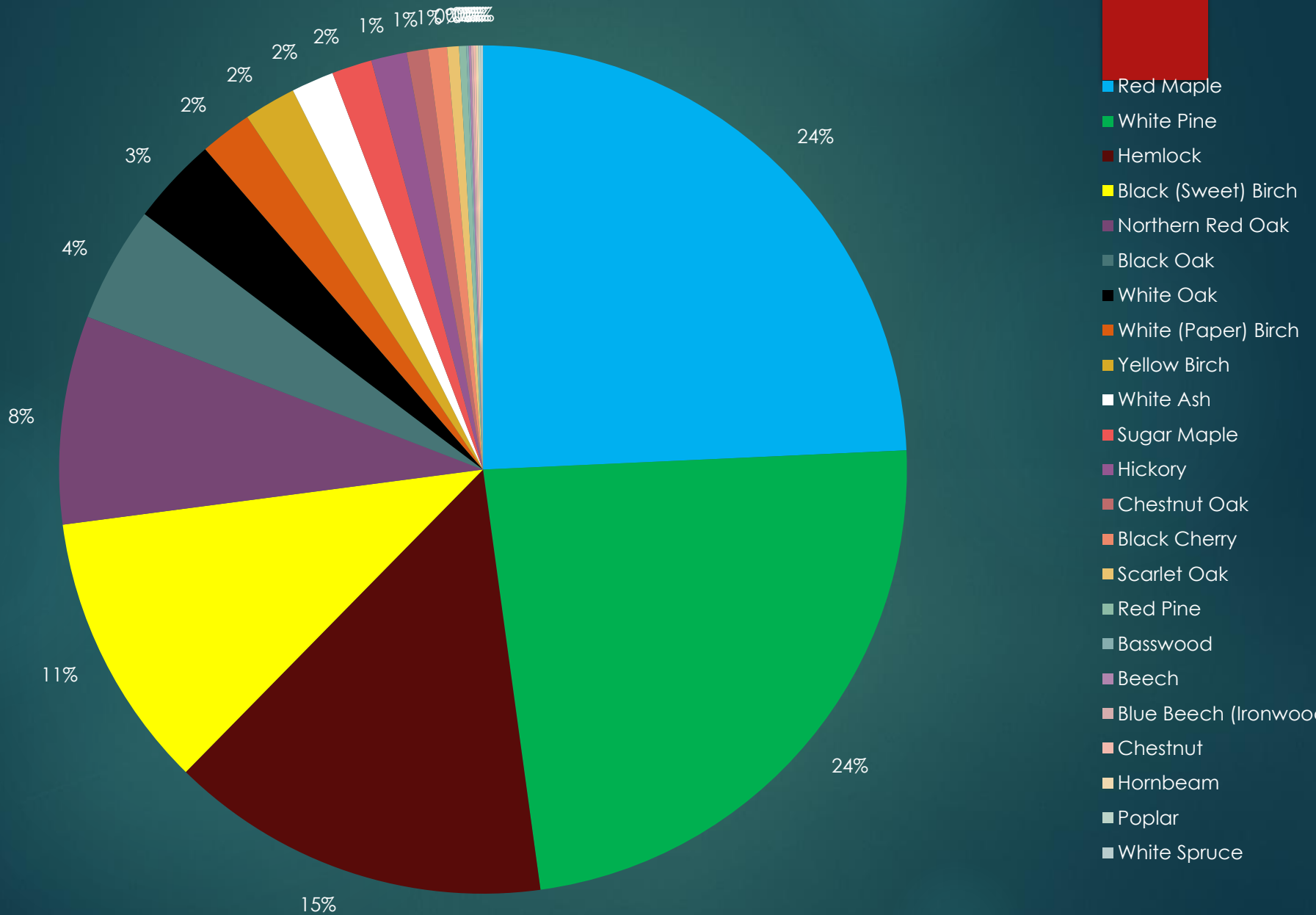
Percentage of "New" Trees By Species - 1980



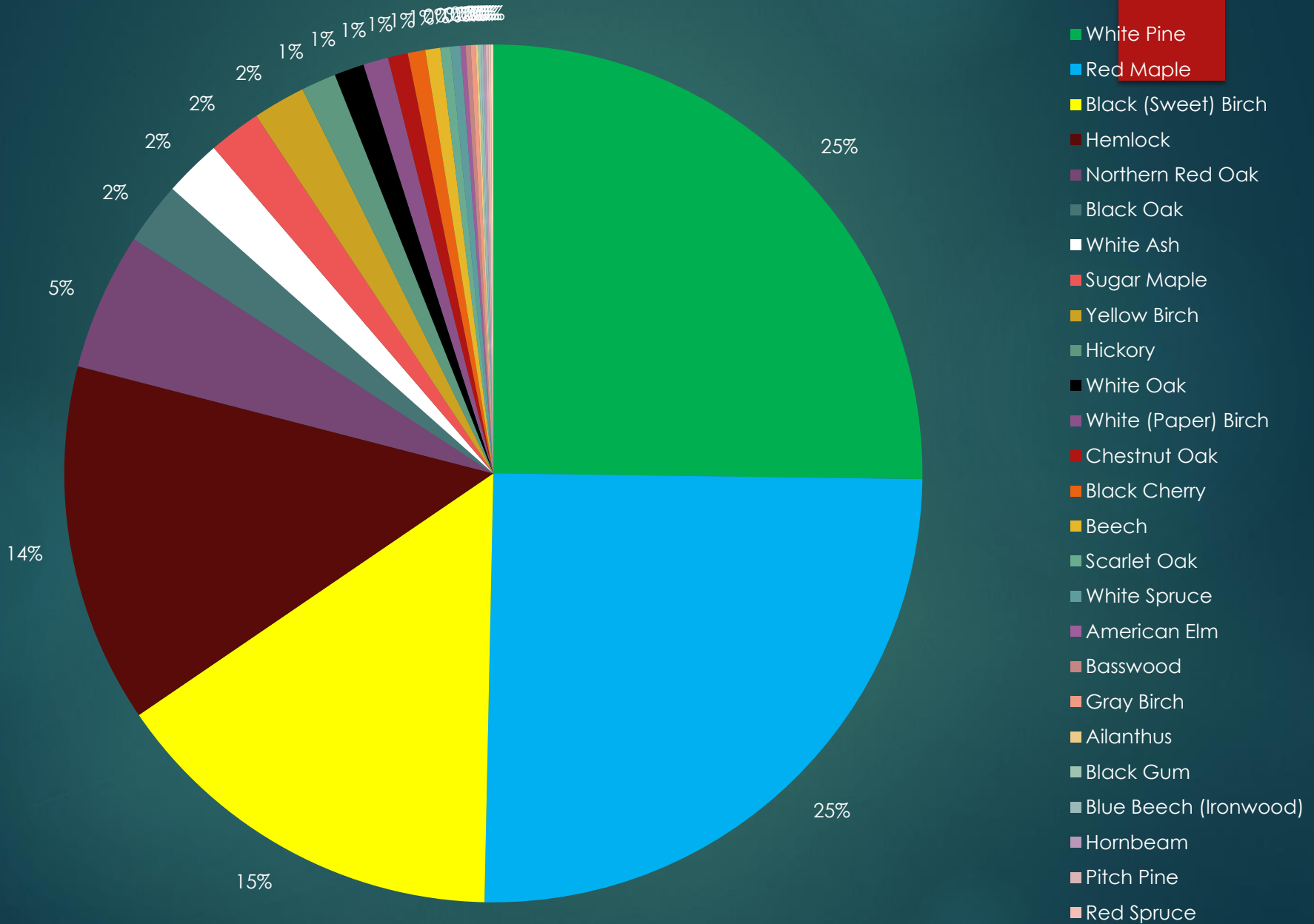
Percentage of "New" Trees By Species - 1990



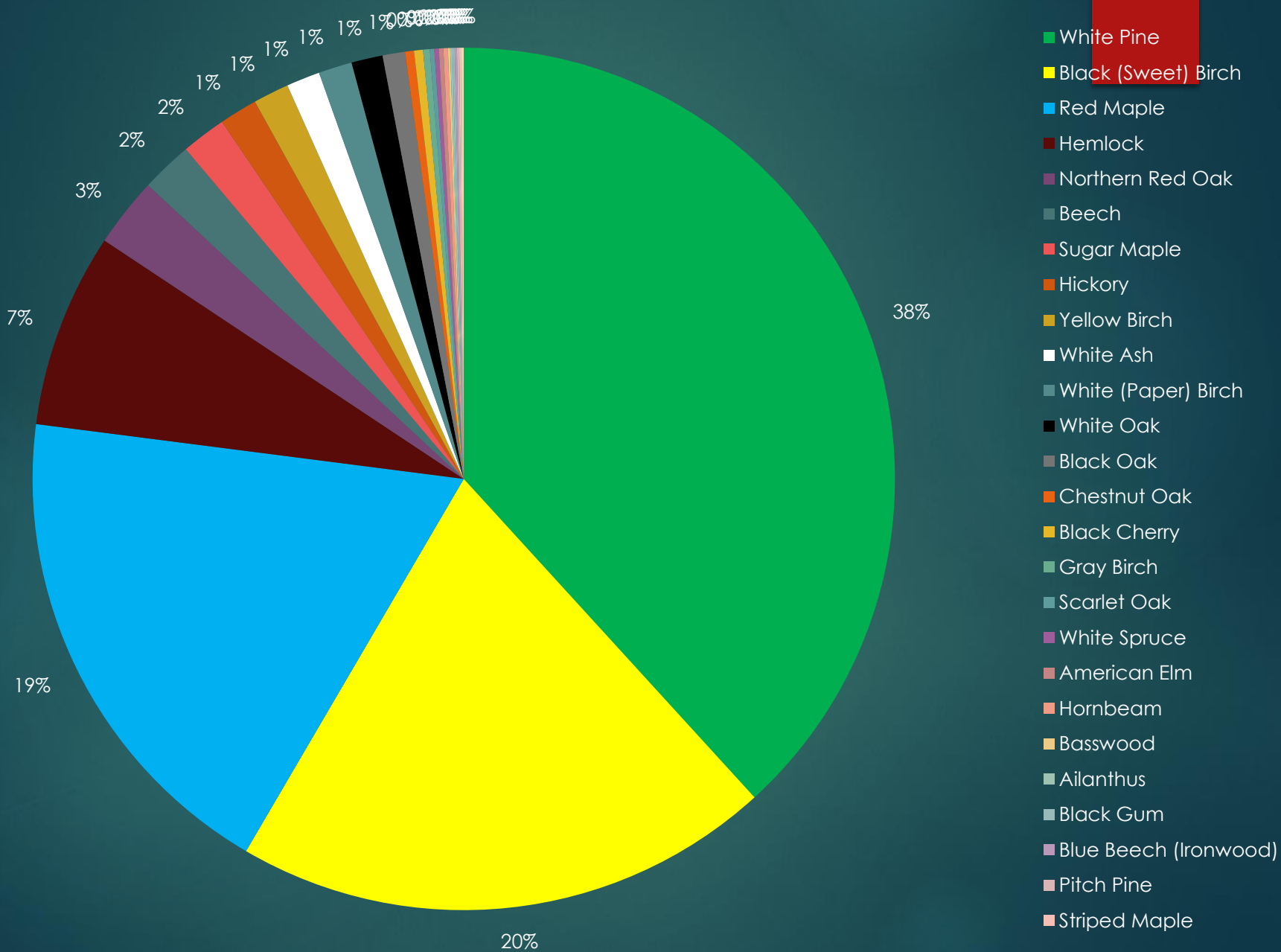
Percentage of "New" Trees By Species - 2000



Percentage of "New" Trees By Species - 2010



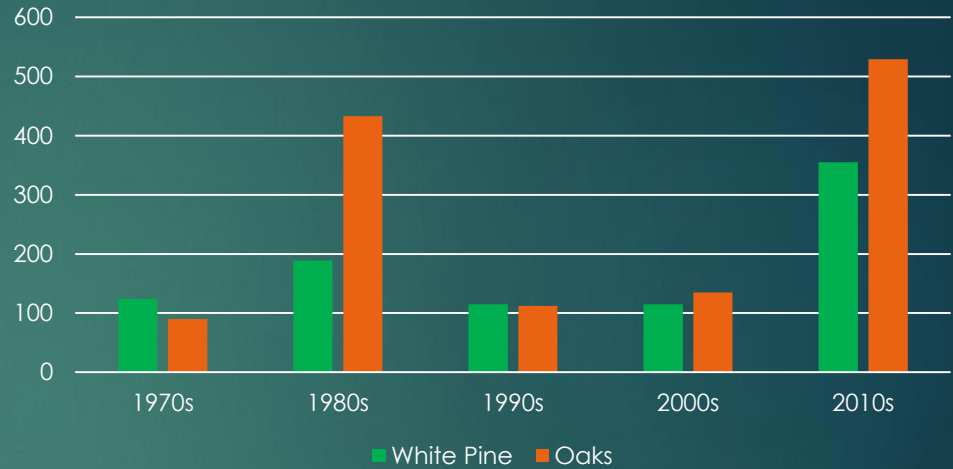
Percentage of "New" Trees By Species - 2020



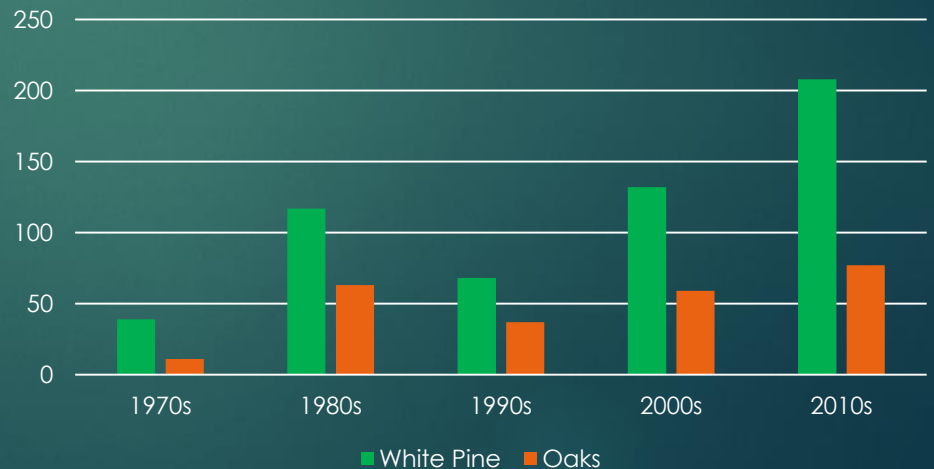
CFI and Mortality Events

- Oak defoliation in the 1980s and 2010s
- White pine too? Maybe not what it appears...

Quabbin CFI Tree Mortality by Decade



Ware River CFI Tree Mortality by Decade



Continuous Forest Inventory: Database and Analysis Status

Tasks Completed:

- ▶ Retroactive continuity completed for all 27,000+ Q and WR trees
 - ▶ Species
 - ▶ Location (AZ + Dist)
 - ▶ Diameter
 - ▶ Live/dead status
- ▶ Most supplemental table code 'crosswalks' completed
- ▶ All paper data sheets digitized

125
167

1960 QUABBIN C.F.I.

178 # 27

PLOT DATA											
PLOT NO.	COUNTY	BLOCK	USE	NO YEAR	DIST.	TYPE	SIZE	STOCK	SIL.	OPER.	DATE
152	221	27		9	77	7	7	10	1		'80
TREE DATA											
PLOT NO.	TREE NO.	SPECIES	DIA.	STATUS	PROD.	SIL.	TOTAL HT.	PRCD. HT.	MEMBL. %		
	152 001	13		4	-	-	-	-			
	152 002	09	189	2	1	1	85	44	77		
	152 003	01	223	2	4	4	90	74	77		
	152 004	09	-	4	-	-	-	-			
	152 005	09	132	2	4	4	70	40	77		
	152 006	08	-	4	-	-	-	-			
	152 007	08	-	4	-	-	-	-			
	152 008	13	097	2	4	4	70	28	93		
	152 009	13	097	2	4	4	66	44	77		
	152 010	13	076	42	3	3	68	48	97		
	152 011	08	-	4	-	-	-	-			
	152 012	13	-	4	-	-	-	-			
	152 013	08	078	2	5	5	85	52	77		
	152 014	08	080	2	5	5	62	30	77		
	152 015	08	085	1	5	5	56	31	77		
	152 016	09	133	2	4	4	68	40	93		
	152 017	13	074	2	3	3	71	58	77		
	152 018	09	-	4	-	-	-	-			
	152 019	13	077	2	3	3	62	44	77		
	152 020	13	-	4	-	-	-	-			
	152 021	09	104	2	4	4	70	30	77		
	152 022	13	097	2	4	4	80	24	77		
	152 023	09	071	42	3	3	68	56	97		
	152 024	09	087	42	3	3	66	56	77		
	152 025	15	074	42	5	5	52	32	77		
	152 026	09	073	2	2	2	66	52	77		
	152 027	09	082	2	3	3	64	52	77		
	152 028	09	057	1	5	5	60	24	77		
	152 029	09	060	1	5	5	68	44	77		

Continuous Forest Inventory: Database and Analysis Status

Tasks In Process:

- ▶ Local height : diameter equations by species
- ▶ Volume per tree per cycle
- ▶ Plot level table crosswalks
- ▶ Plot non-forested area calculations
- ▶ 'Future-proofing' and standardizing tables and code keys for sharing with FEMC



Continuous Forest Inventory: Database and Analysis Status

Tasks Envisioned

- Comprehensive report – summary in next LMP
- Front-end interface – internal (and public?) querying
- Complete Wachusett/Sudbury data collection/entry and merge
- Possible data additions: Downed Woody Debris transects, herbaceous microplots

Questions?
brian.keevan@mass.gov

