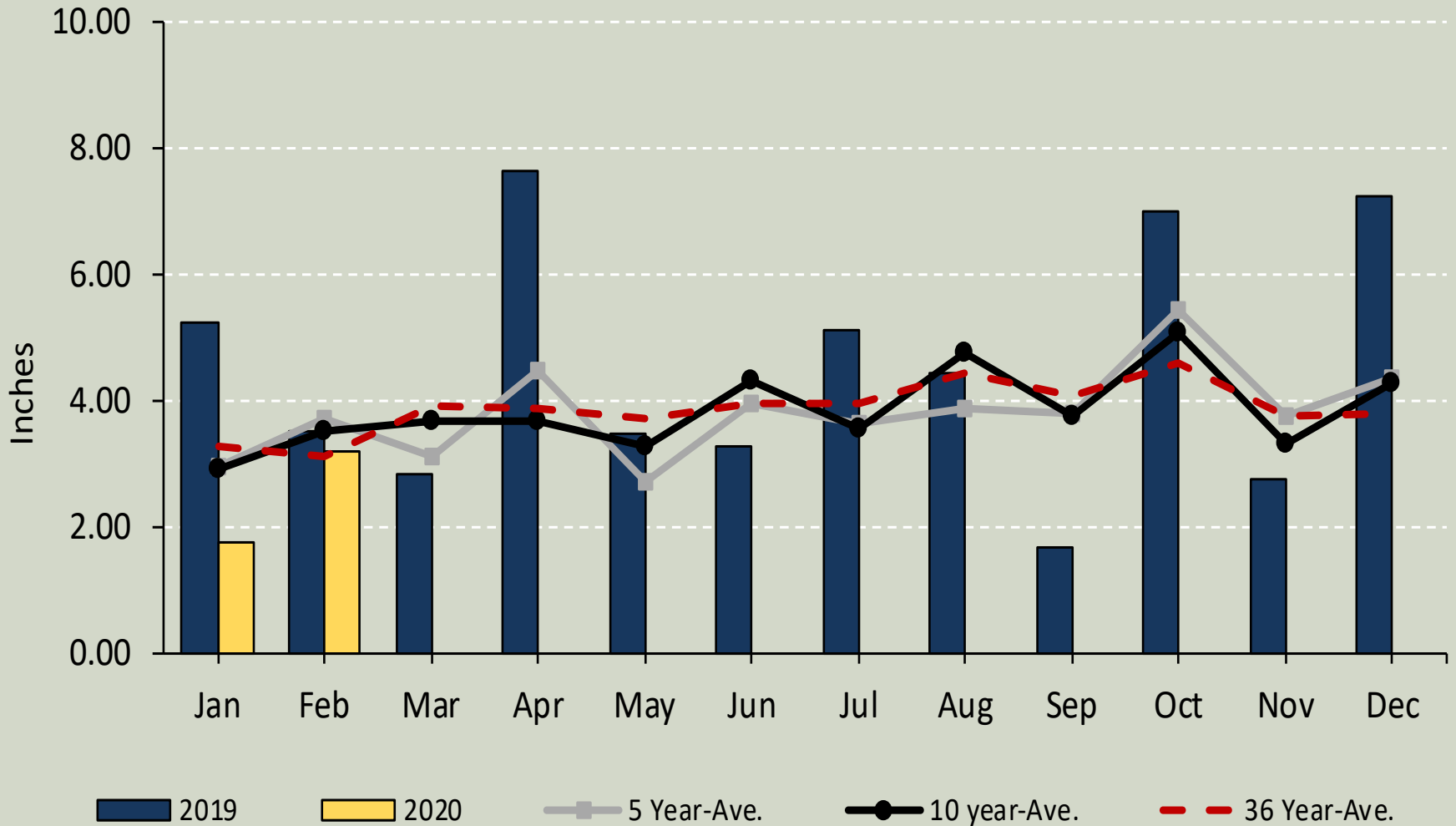




# Precipitation`

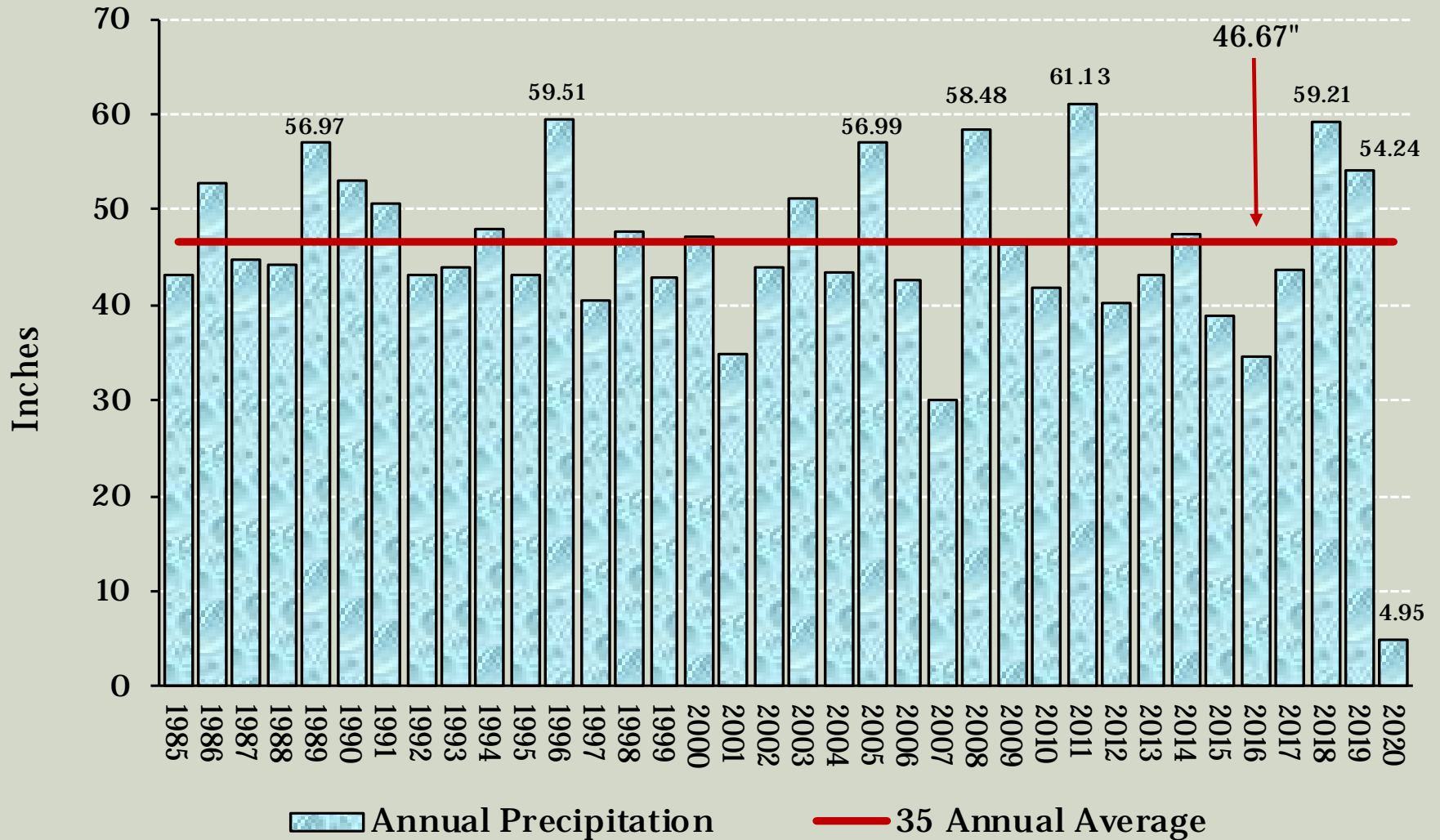
## Precipitation





# Precipitation

## Annual Precipitation 1985-2019

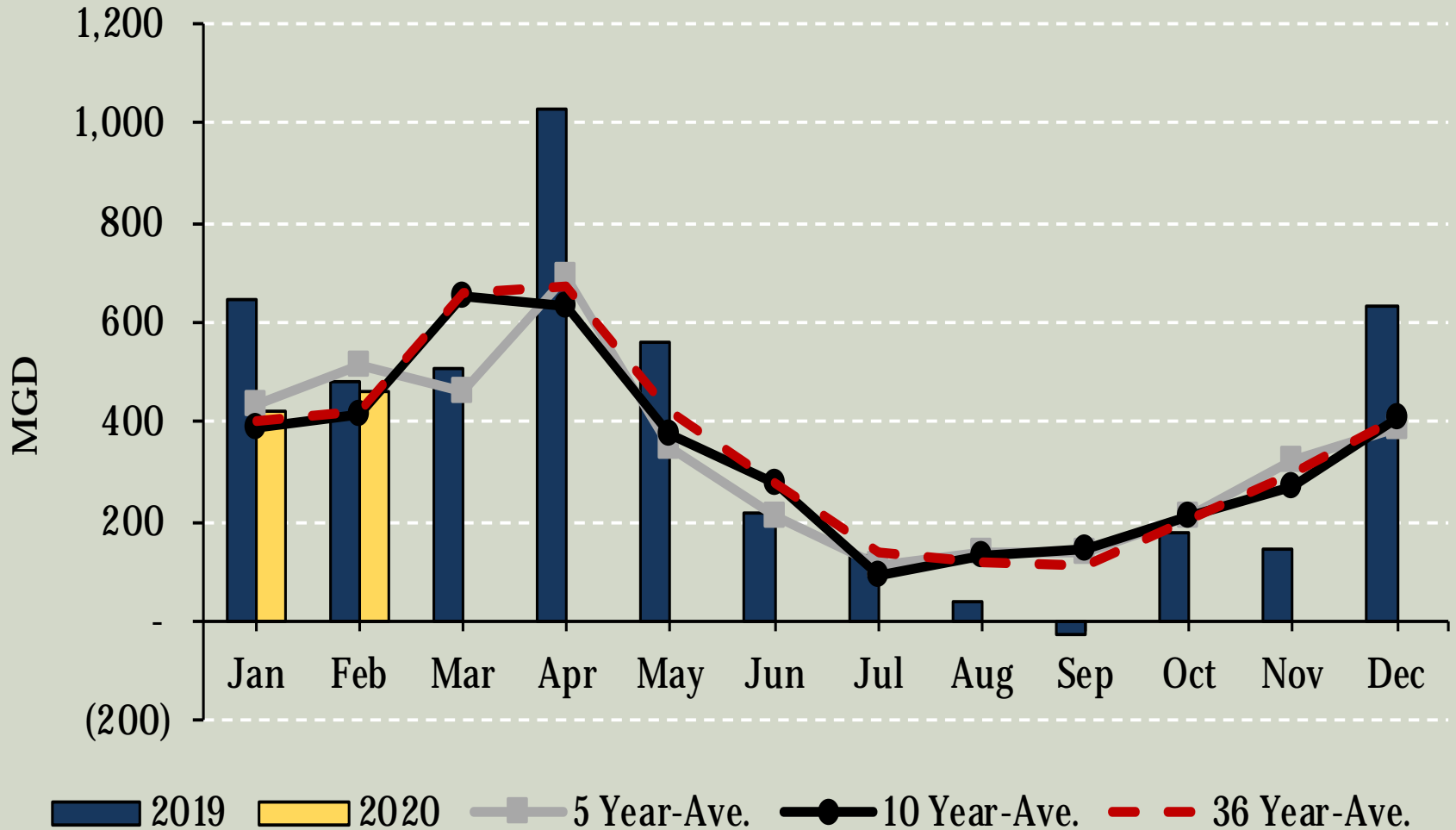




# Yield

**System Yield** is defined as the water produced by its sources, and is reported as the net change in water available for water supply and operating requirements.

## System Yield

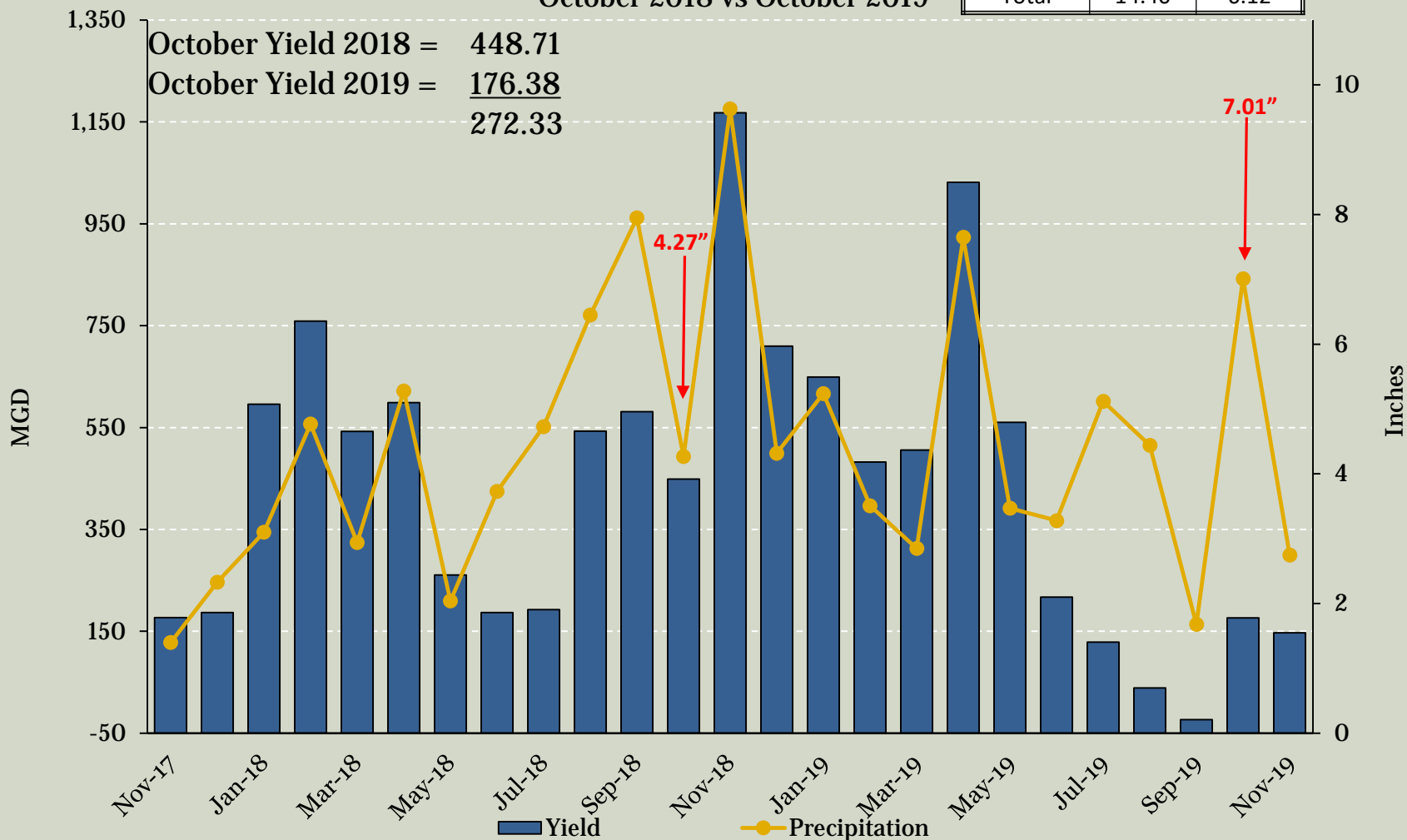




# October Yield 2018 vs 2019

	2018	2019
August	6.45	4.44
September	7.95	1.68
<b>Total</b>	<b>14.40</b>	<b>6.12</b>

**YIELD**  
October 2018 vs October 2019

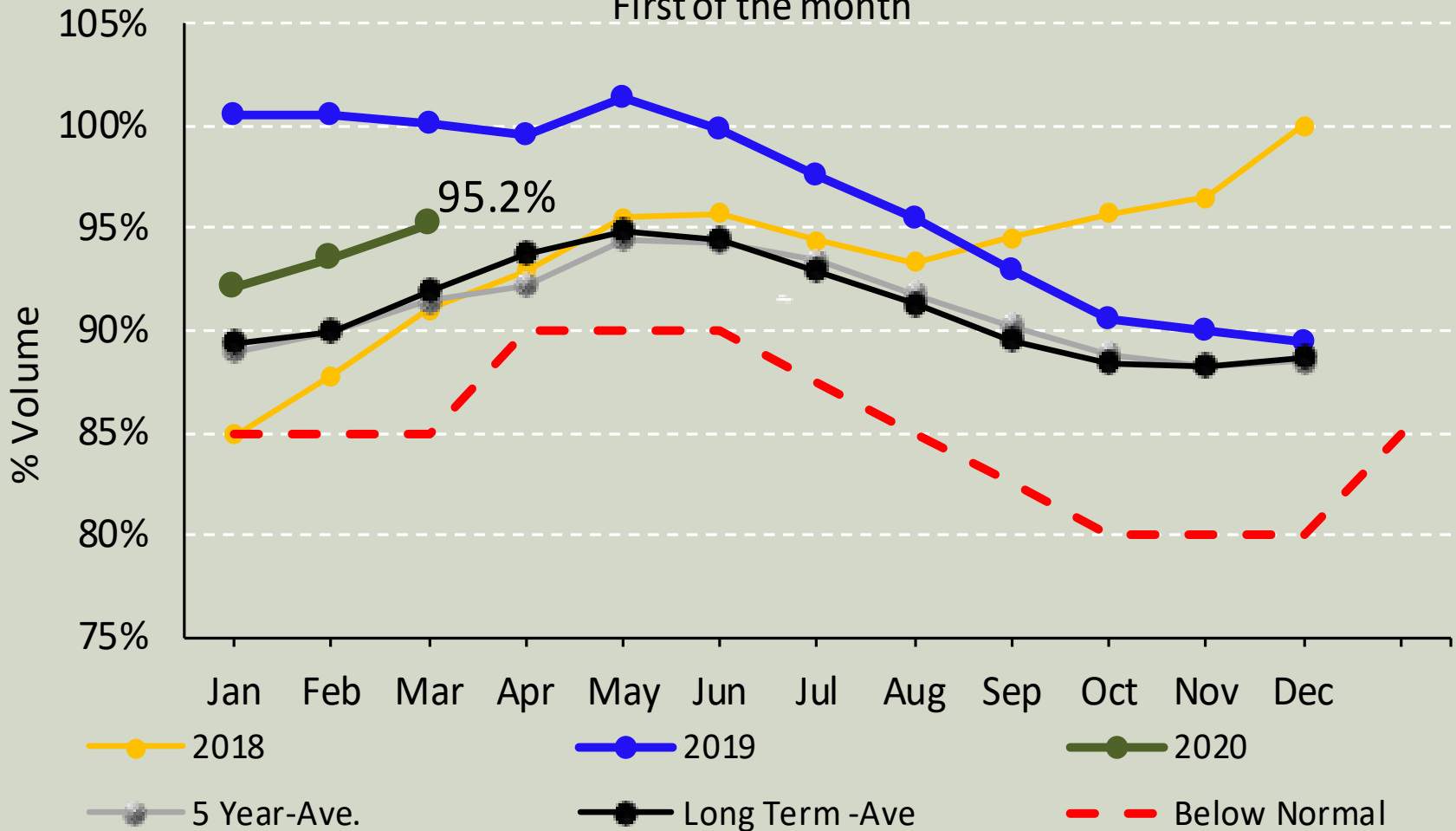




# Quabbin Reservoir

## Quabbin Reservoir Volume

First of the month

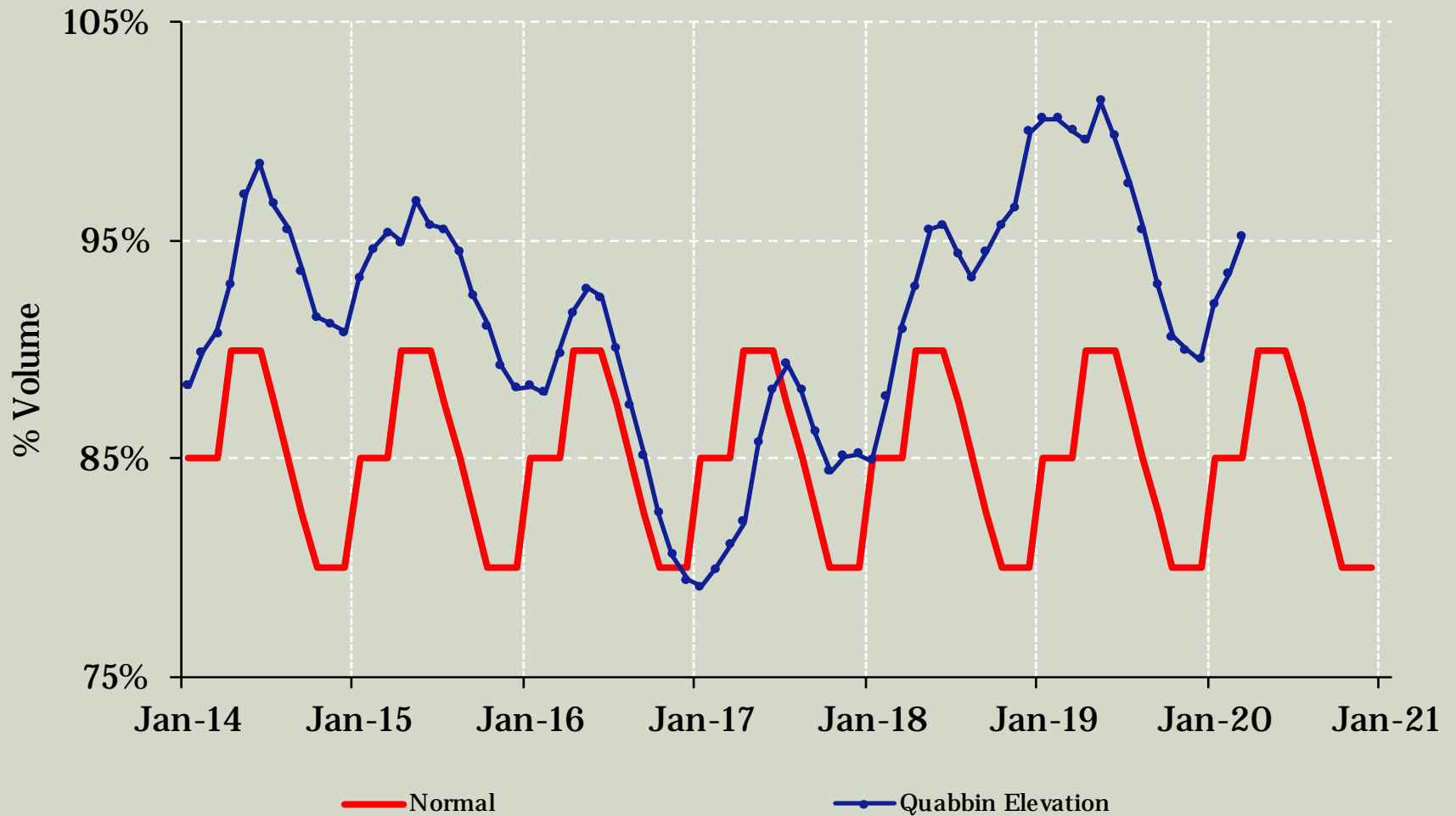




# Quabbin Reservoir

Date	Elevation	Volume	% Volume
3/10/20	527.63	393,888	95.5%
12/18/19	525.34	376,650	91.4%
Totals	2.29	17,238	4.2%

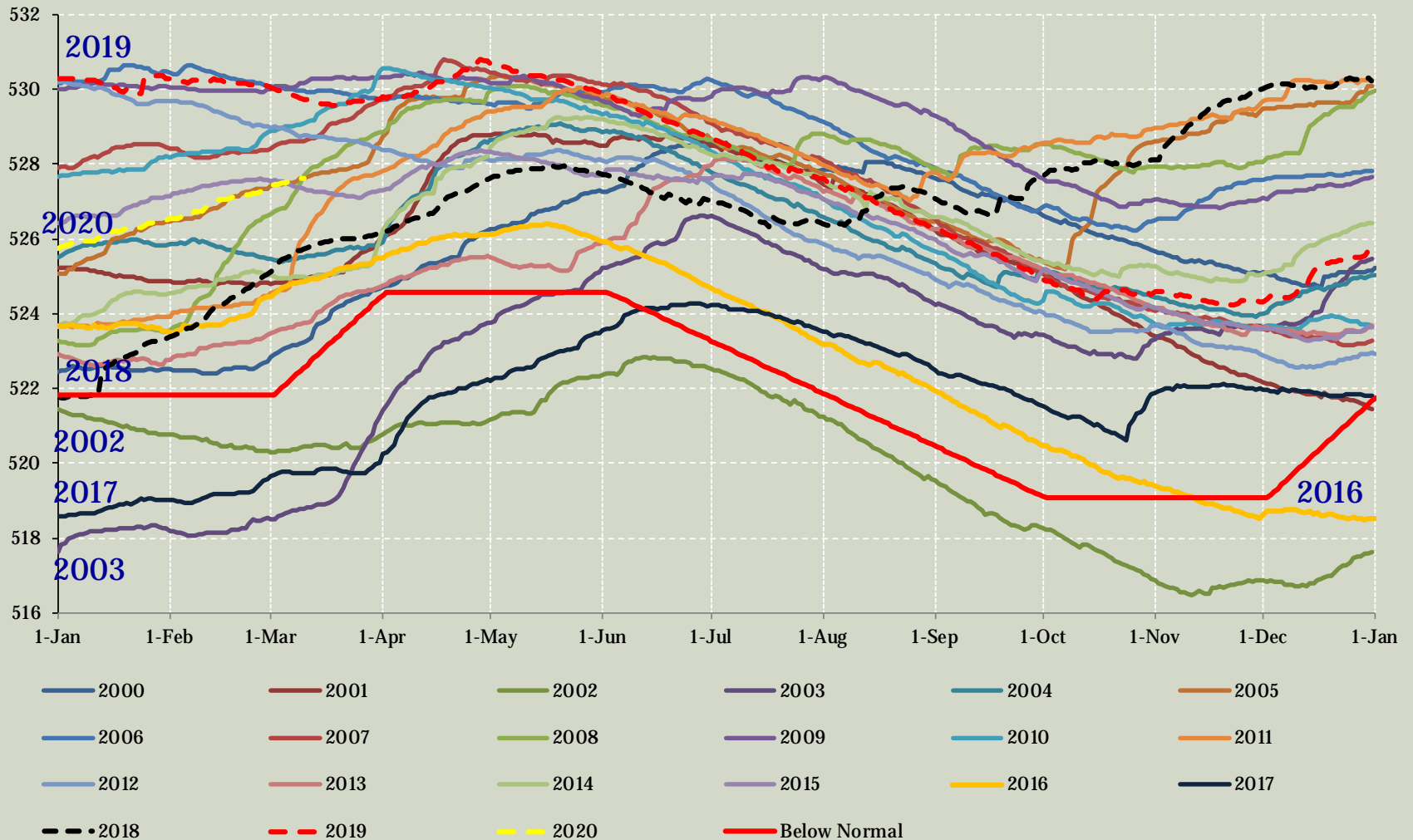
## Quabbin Reservoir Volume First of the Month





# Quabbin Reservoir

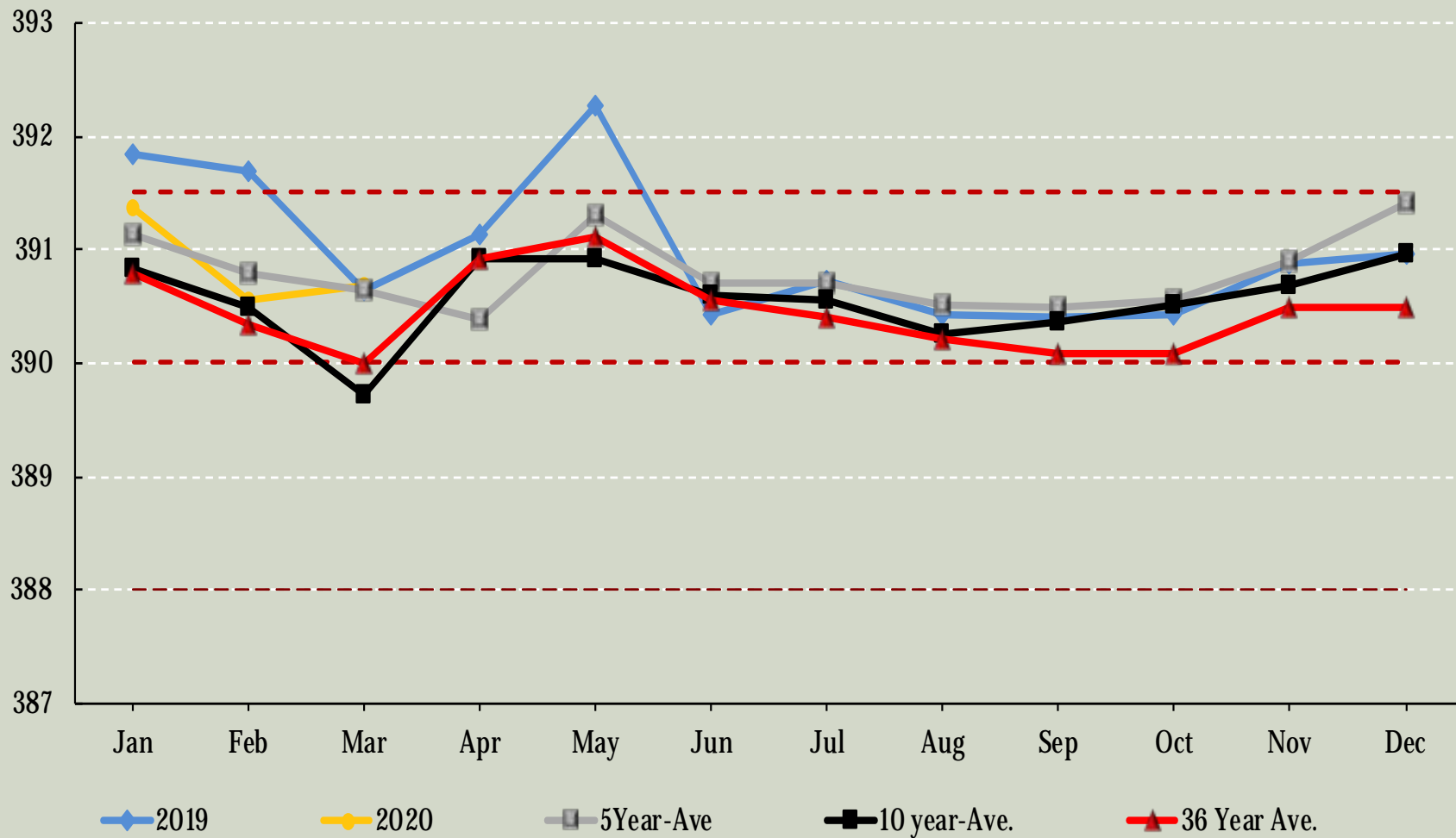
## Quabbin Reservoir





# Wachusett Reservoir

## Wachusett Reservoir Elevation

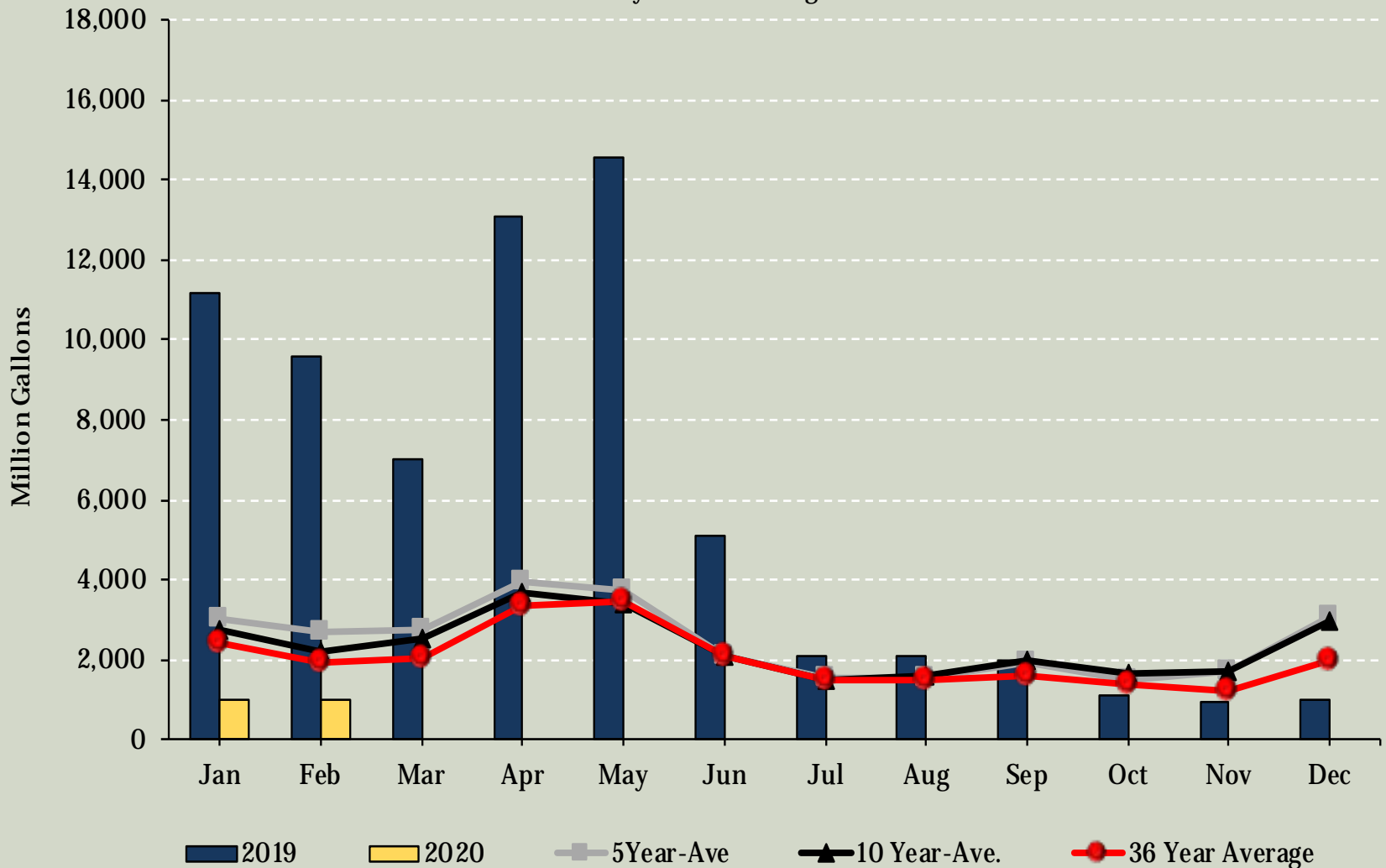






# Swift River

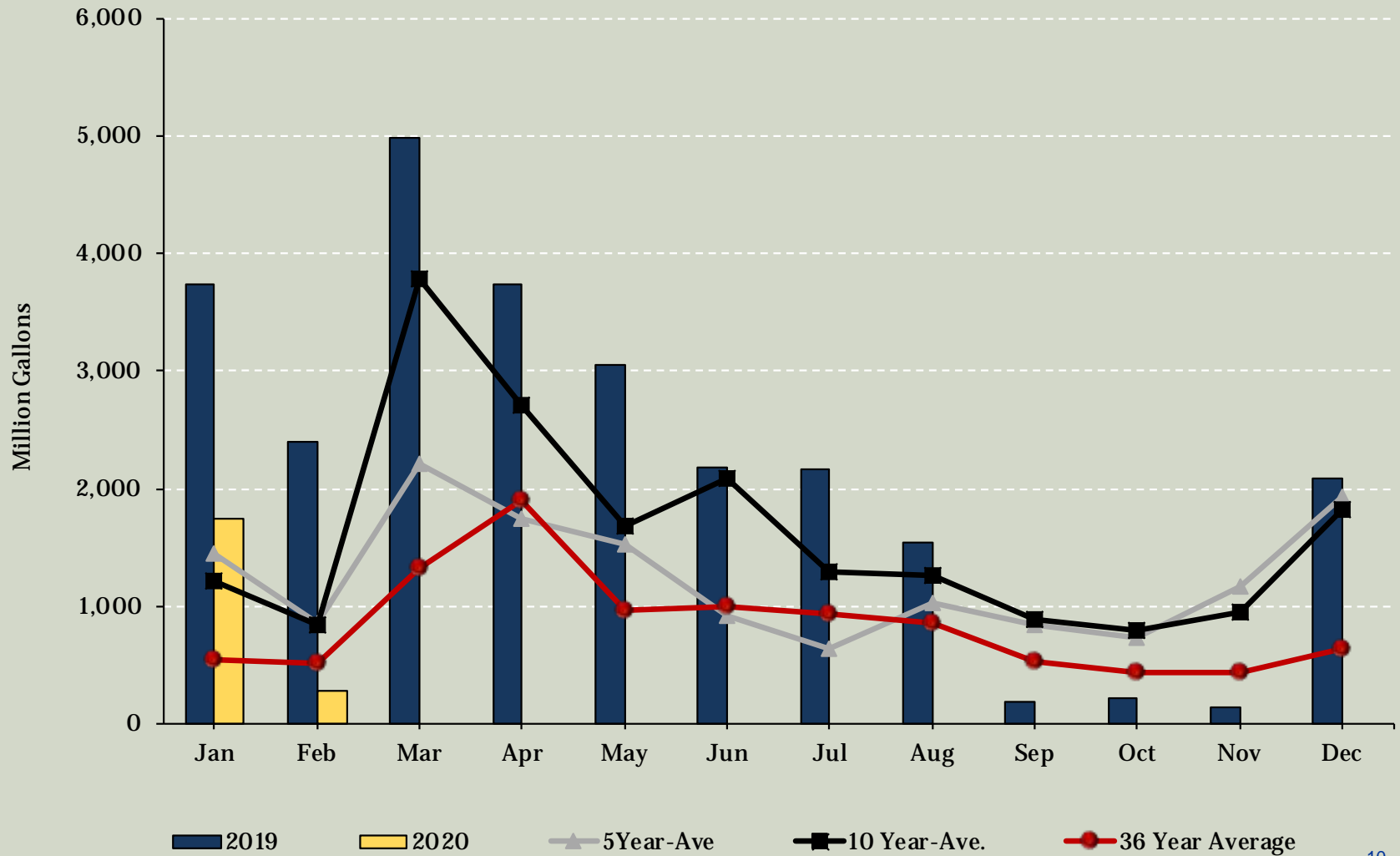
## Swift River Release Monthly Totals/Averages





# Nashua River

## Nashua River Release Monthly Totals/Averages

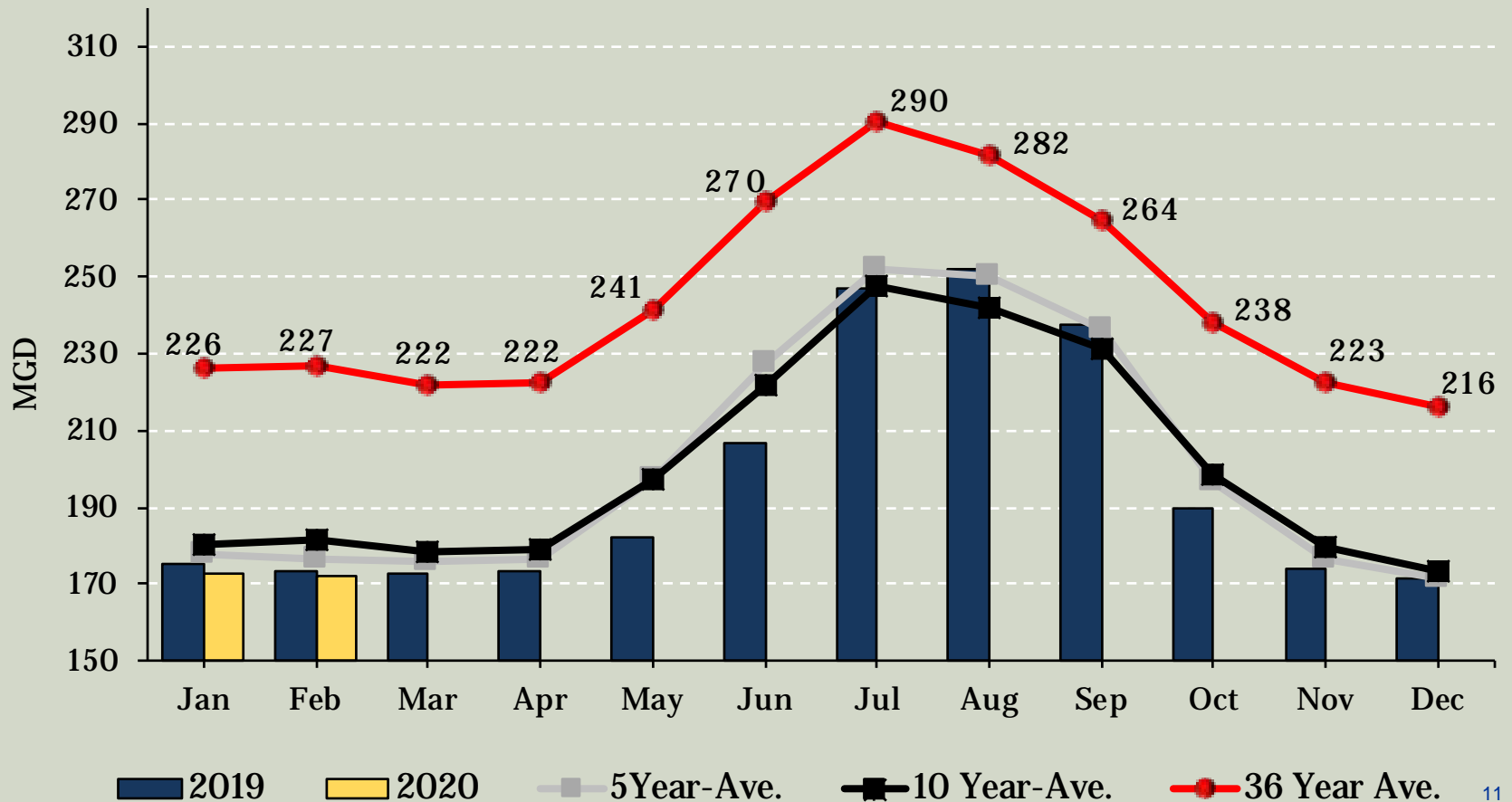




# Daily Withdrawal

**Daily Withdrawal**  
CWTP + NCST Delta + CVA + Quinapoxet Withdrawal + Clinton + Leominster + Worcester

### Daily Withdrawal Monthly Average





# Sudbury & Foss Reservoirs

