



***Wachusett Dam Lower Gatehouse  
Pipe Break***

November 14, 2018

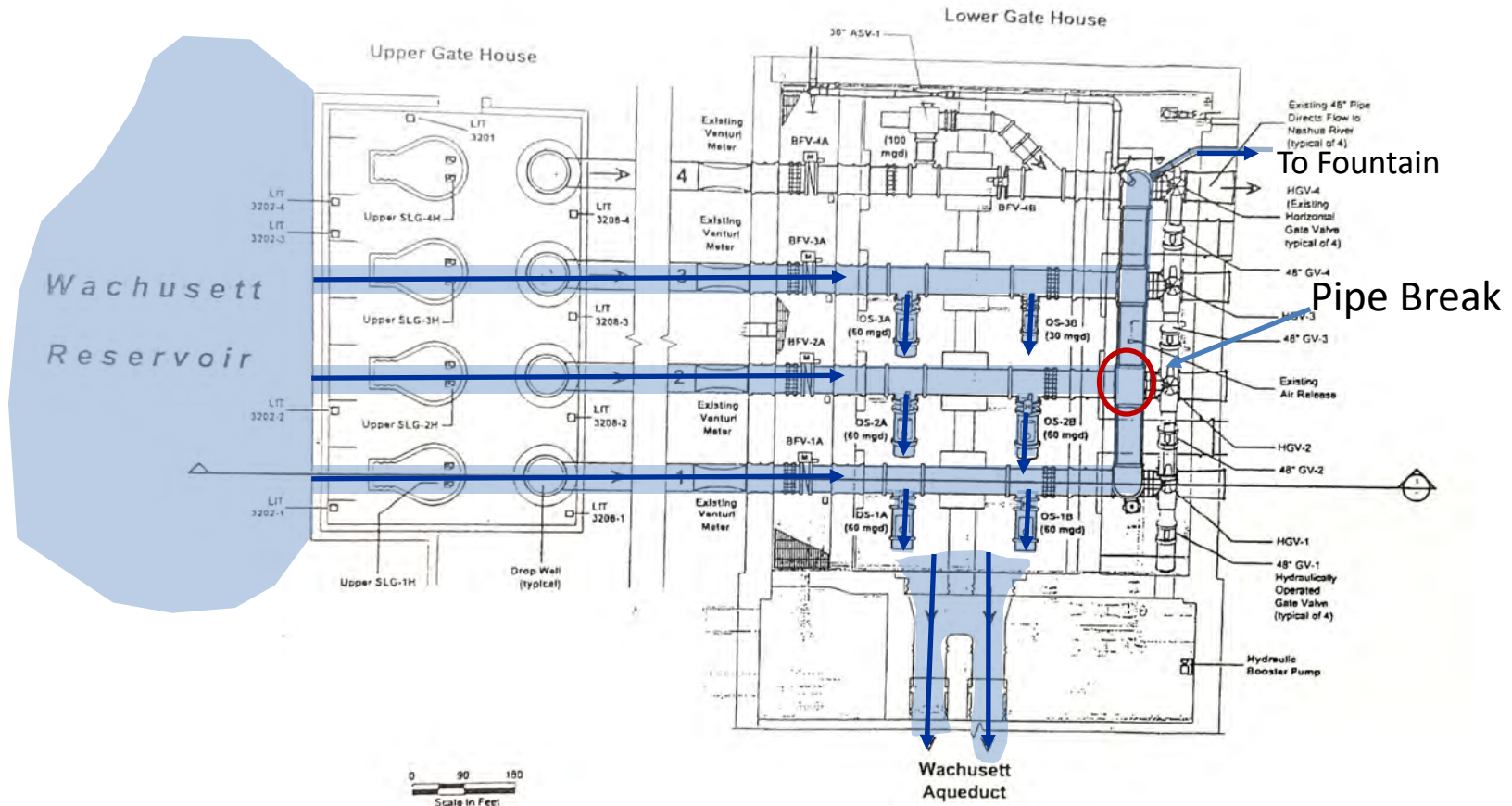


# Wachusett Dam Lower Gatehouse





# Wachusett Dam Upper and Lower Gatehouse





# Wachusett Dam Lower Gatehouse Pipe Break

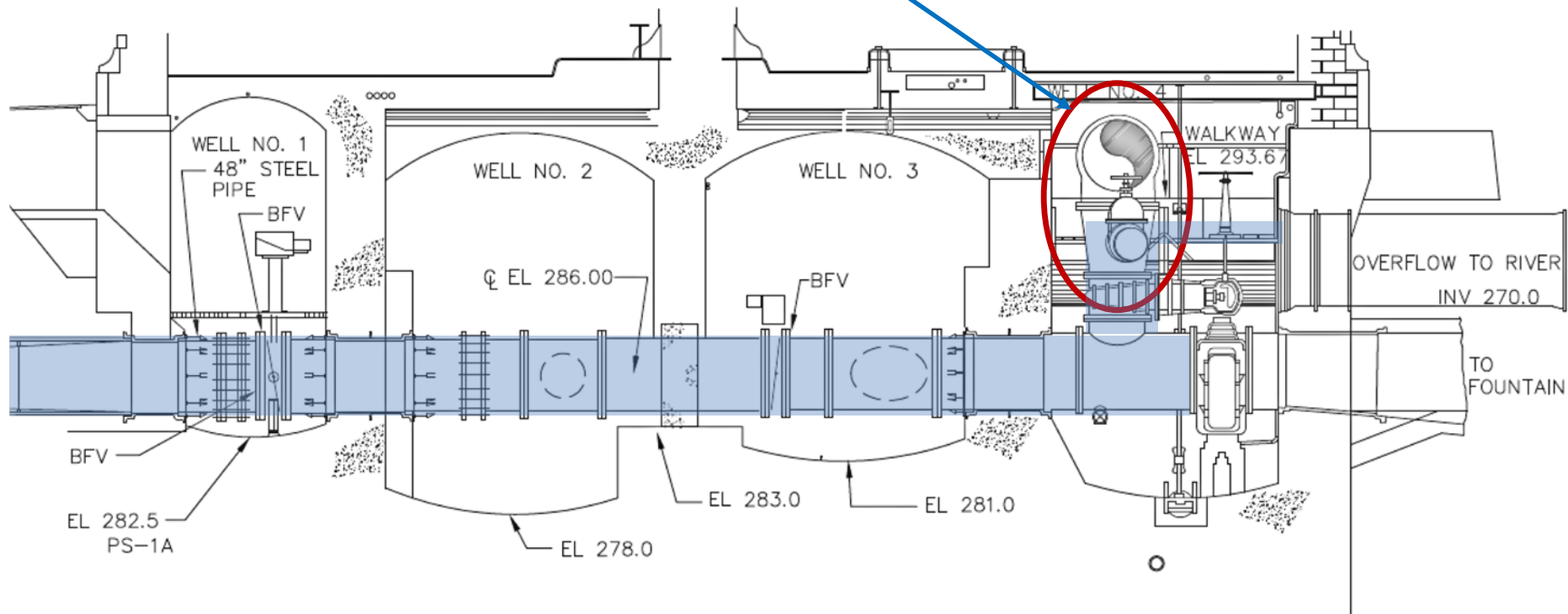
Break of 1905 Equalizer Pipe during testing of the Wachusett Aqueduct Pumping Station





# Wachusett Dam Lower Gatehouse

Tee and Reducer Failed





# Wachusett Dam Lower Gatehouse Equalizer Pipe



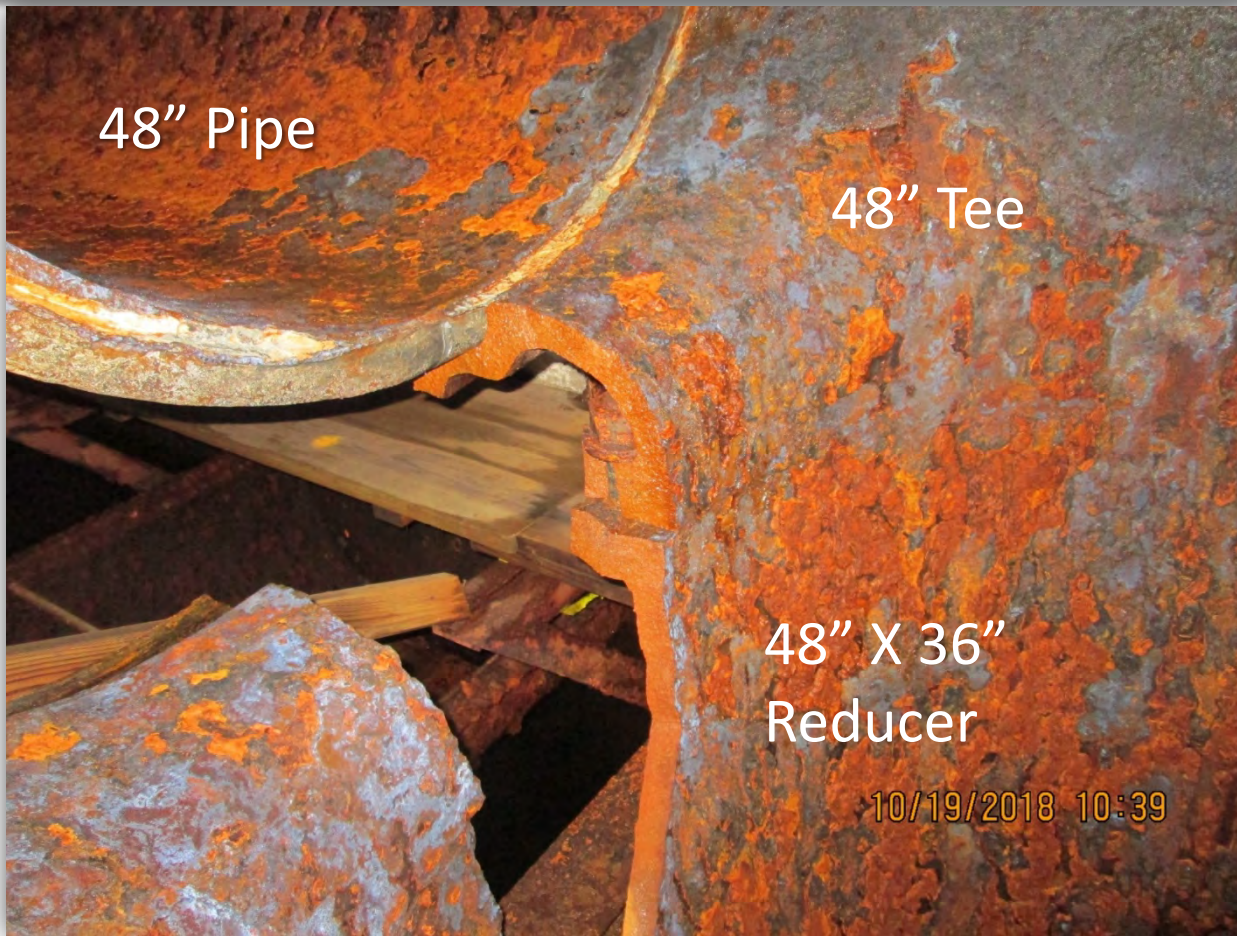


# Wachusett Dam Lower Gatehouse Equalizer Pipe





# Wachusett Dam Lower Gatehouse Equalizer Pipe







# Wachusett Aqueduct Pumping Station Testing is On-Going

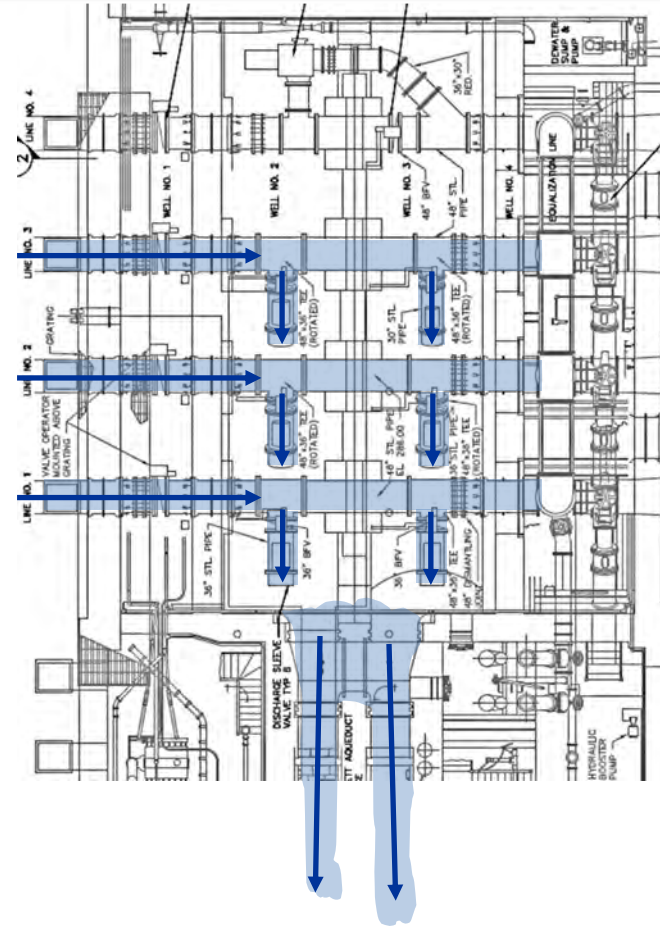




# Short-Term Action

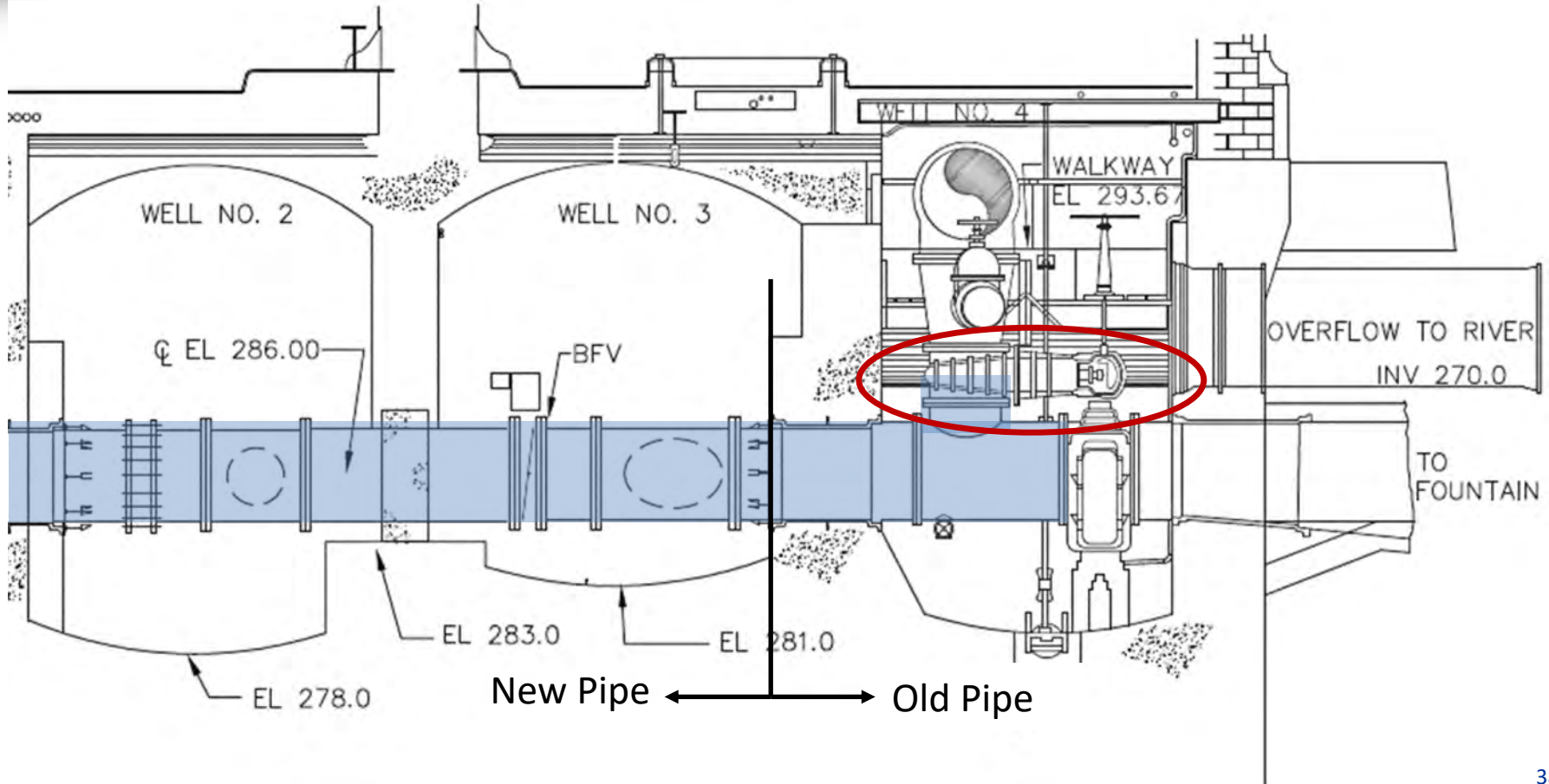
## Alternatives to Permit Continuation of Wachusett Aqueduct Pumping Station Testing:

1. Close the valves on Lines 1 and 2 to isolate water from the equalizer pipe. Test pipe integrity
2. Install blind flanges on Lines 1, 2 and 3





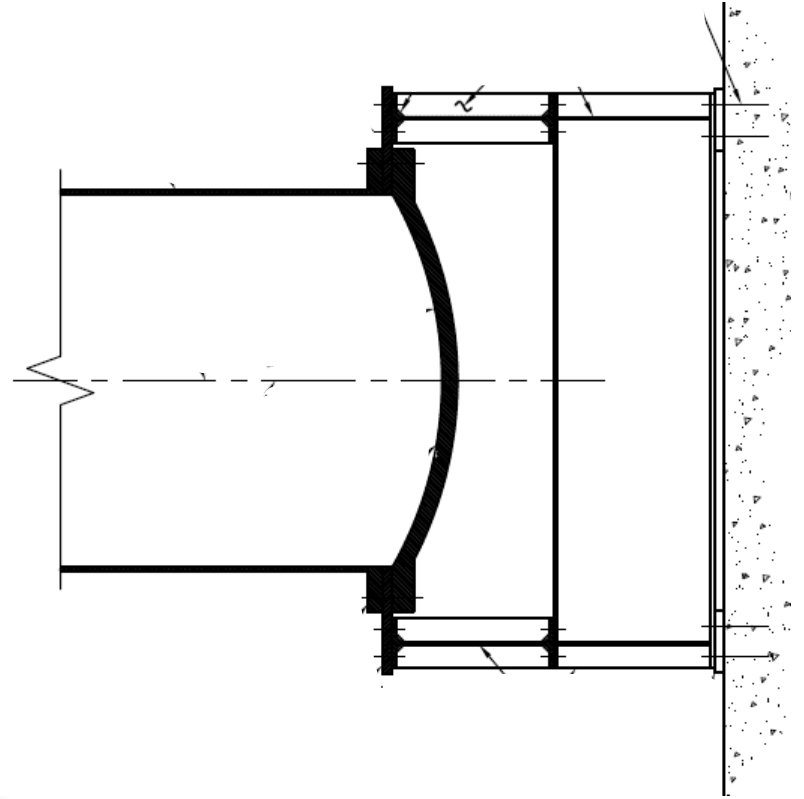
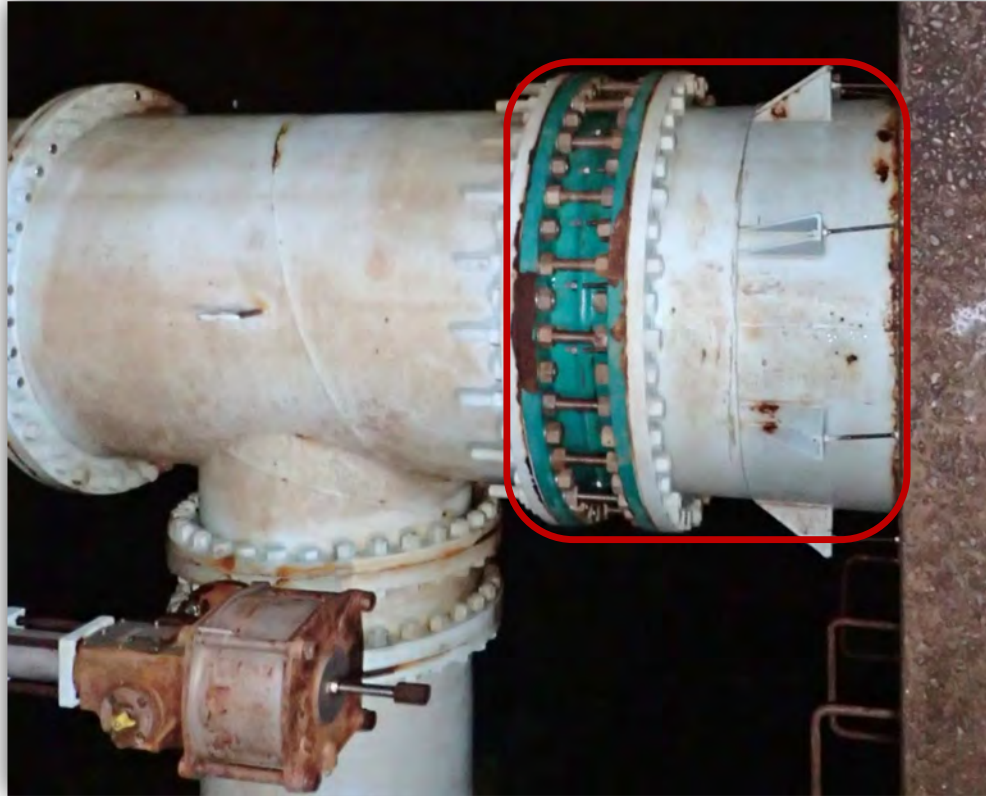
# Valve to Equalizer Pipe







# Wachusett Dam Lower Gatehouse Blind Flange and Bracing





## Long-Term Plan

- Remove all the old cast-iron piping in Well 4 of the Lower Gatehouse
- Install new pipe and flow control valves for releases to the Nashua River



# Carroll Plant Electric Generator No. 1

- Replacement of Generator No. 1 is required following attempts to repair it
- All four generators needed to power Carroll plant and Wachusett Aqueduct Pumping Station at full capacity
- Contract for replacement advertised

