

dcr

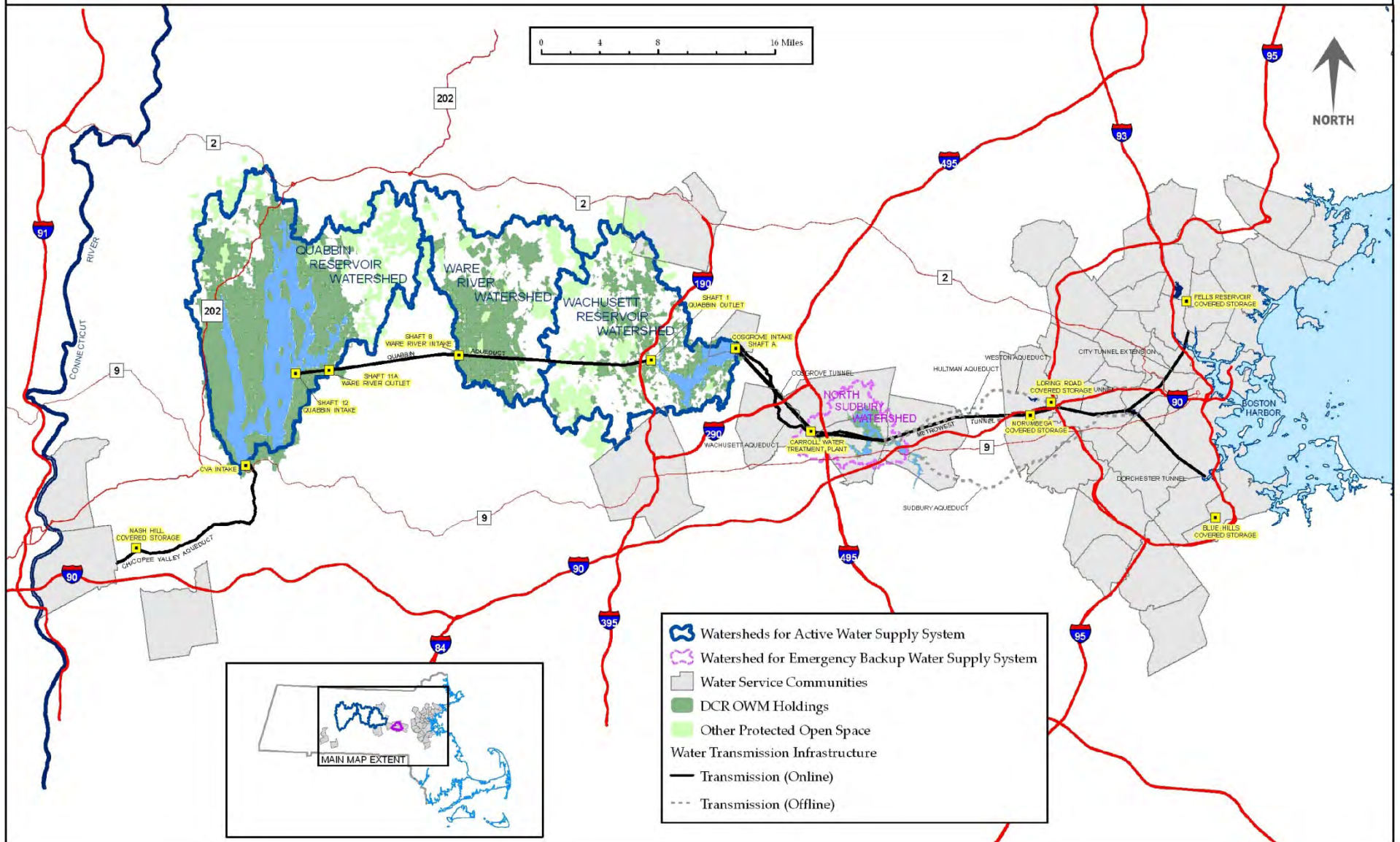




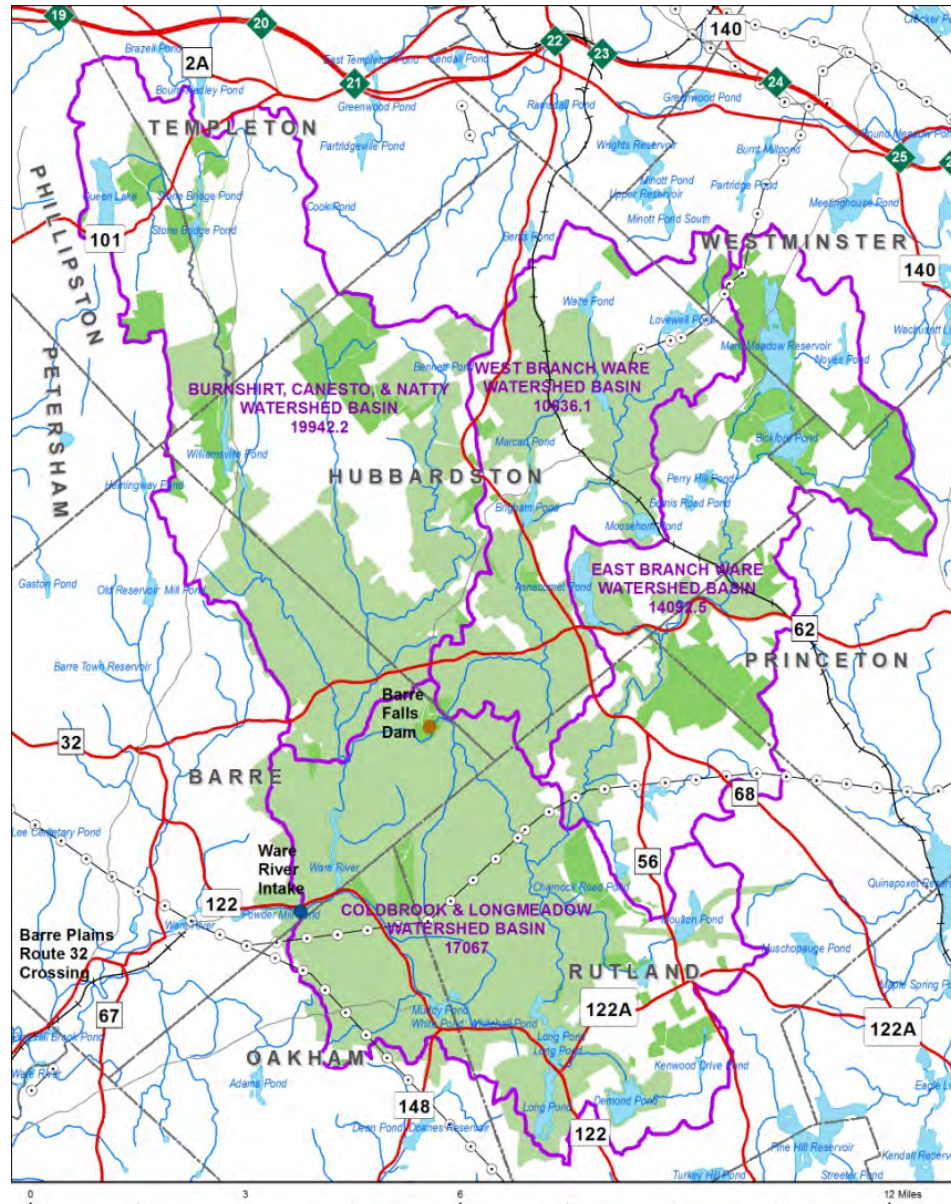
The Commonwealth of Massachusetts
Executive Office of Energy & Environmental Affairs
DEPARTMENT OF CONSERVATION & RECREATION

Water Supply System Map

Division of Water Supply Protection - Office of Watershed Management

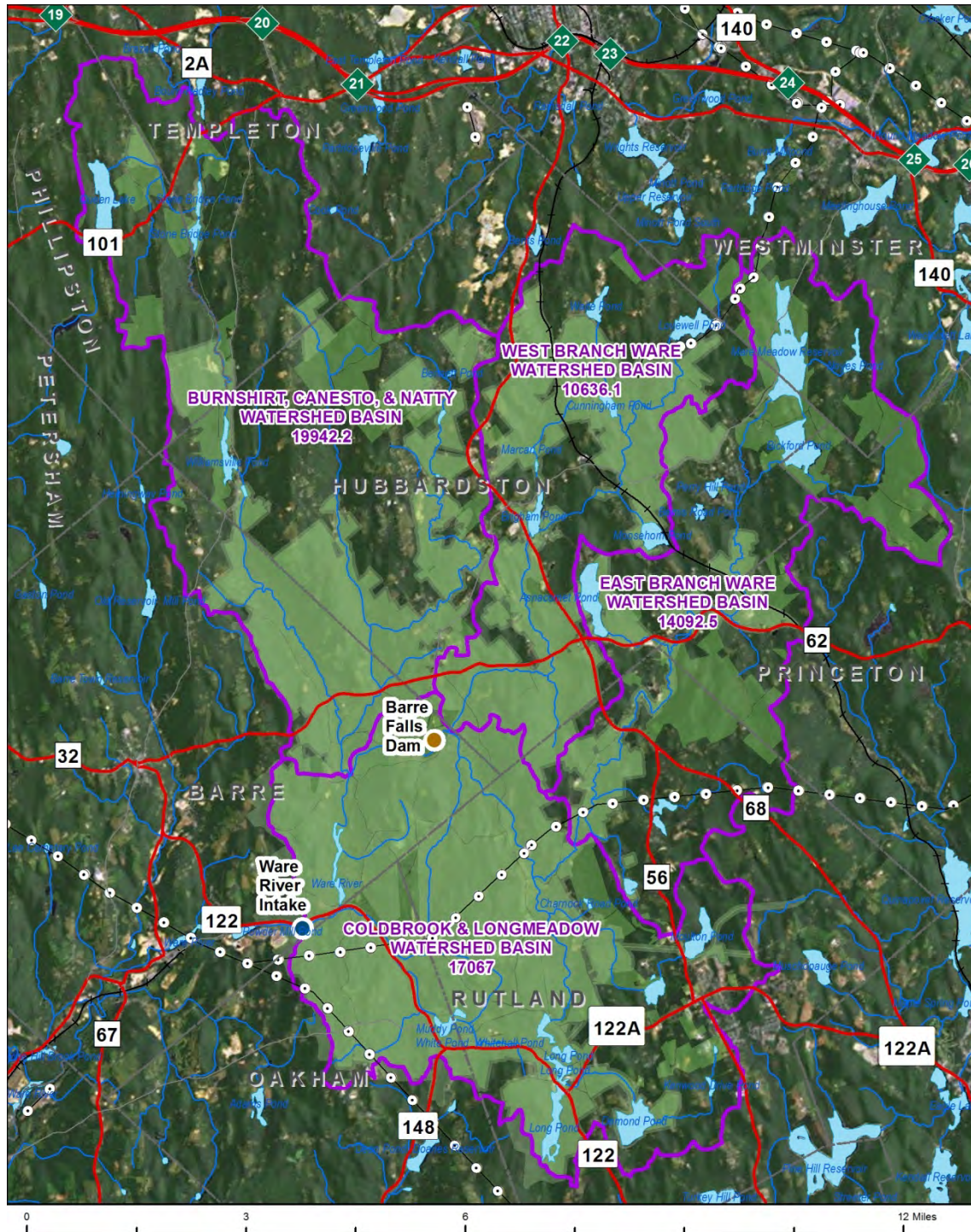


Ware River Watershed



Ware River Watershed

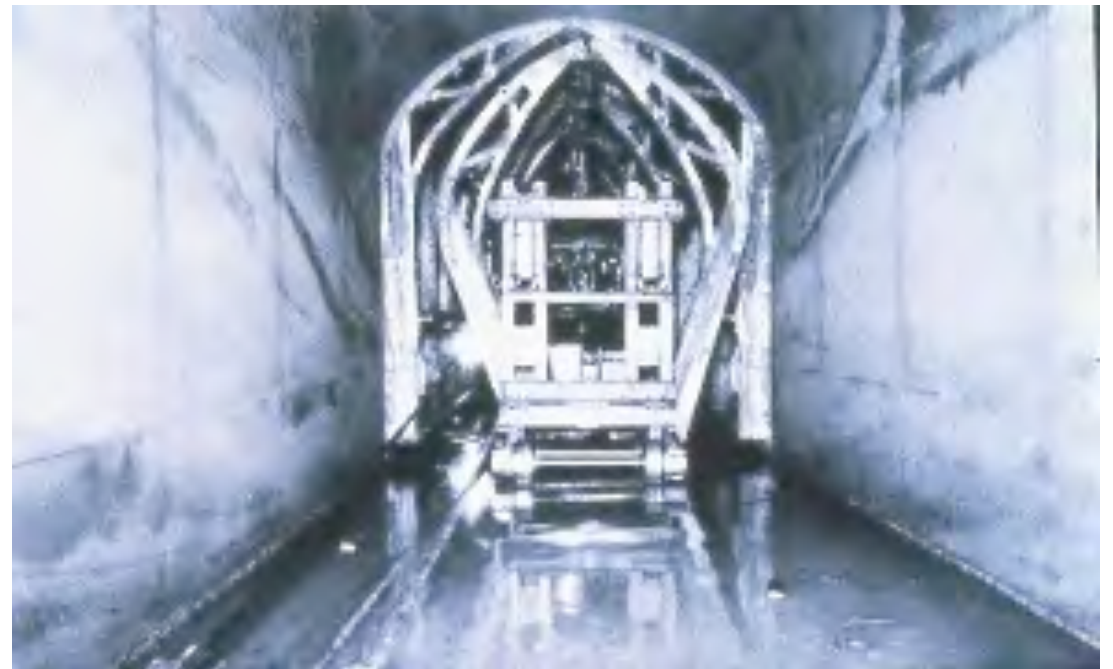
Watershed Area Upstream of Shaft Diversion	62,270 acres
DCR Owned Property	25,000 acres
Withdrawal Period for Ware River	Oct 15-June 15
Minimum Flow Rate for Diversion	85 MGD
Maximum Diversion Rate to Quabbin	600 MGD
Maximum Diversion Rate to	600 MGD
Ware River Elevation	656 BCB
Quabbin Spillway Elevation	530 BCB
Wachusett Spillway Elevation	390 BCB



0 3 6 12 Miles

History

- Ware River Act 1926
 - Three villages removed
 - 600 people displaced
- Swift River Act 1927
- Aqueduct
- Shaft 1 to Shaft 8 1929
31
- Shaft 8 to 12 1931 to 33
- Barre Falls 1956 to 1958
- 8 billion gallons storage











What Does DCR do in Ware River

- Ware River Watershed Advisory Committee
- Maintenance staff maintain 100 miles of Roads a number of small dams, fields, 100 gates and whatever else comes up.
- Public Access is a major component of Ware River as well as Quabbin
- Forestry Staff
- EQ staff
- Engineering
- Rangers

Ware River Watershed
Public Access Policy Summary 2010

Activity	Ware River Reservation	Ware River Off-Reservation	Ware River Intake Zone (Restricted Area)
VEHICLE ACCESS			
<i>Motorized</i>			
Driving – vehicles registered for public roadways	<input type="checkbox"/> 1	<input type="checkbox"/> 1	⊙
Snowmobiling – designated area only	<input type="checkbox"/> 2	<input type="checkbox"/>	⊙
Operating ORVs – ATVs, dirt bikes, etc.	⊙ 3	⊙ 3	⊙ 3
<i>Non-Motorized</i>			
Bicycling – DCR roads only	<input type="checkbox"/> 4	<input type="checkbox"/> 4	⊙
FOOT ACCESS			
Wildlife Viewing/Nature Study	<input type="checkbox"/> 15	<input type="checkbox"/> 15	⊙
Hiking/Walking/Snowshoeing/ Cross-country Skiing	<input type="checkbox"/> 15	<input type="checkbox"/> 15	⊙
Hunting and Trapping	<input type="checkbox"/> 5	<input type="checkbox"/> 5	⊙
Ice Fishing and Ice Skating	<input type="checkbox"/> 6	<input type="checkbox"/> 6	⊙
Shore Fishing	<input type="checkbox"/> 6	<input type="checkbox"/> 6	⊙
Fires and Cooking – includes gas grills	⊙	⊙	⊙
Dogs and Domestic Animals – includes hunting with dogs	<input type="checkbox"/> 7	<input type="checkbox"/> 7	⊙
Horseback Riding – designated routes	<input type="checkbox"/> 8	<input type="checkbox"/> 8	⊙
WATER ACCESS			
Boating (motorized)	⊙ 9	<input type="checkbox"/> 10	⊙
Boating (non-motorized) – canoes and kayaks	<input type="checkbox"/> 11	<input type="checkbox"/> 11	⊙
Swimming/Wading	<input type="checkbox"/> 12	<input type="checkbox"/> 12	⊙
Operating Personal Water Crafts – jet skis	⊙	⊙	⊙
OTHER ACTIVITIES			
Night Access	<input type="checkbox"/>	<input type="checkbox"/>	⊙
Overnight Camping	⊙	<input type="checkbox"/> 13	⊙
Organized Sports	<input type="checkbox"/> 14	<input type="checkbox"/> 14	⊙
Programs/Assemblies	<input type="checkbox"/> 15	<input type="checkbox"/> 15	⊙
Fishing Derbies	<input type="checkbox"/> 14	<input type="checkbox"/> 11	⊙
Geocaching	<input type="checkbox"/> 16	<input type="checkbox"/> 16	⊙
Trail Clearing/Trail Marking/Advertising	⊙	⊙	⊙
Possessing Alcoholic Beverages	⊙	⊙	⊙
Collecting/Metal Detecting	⊙	⊙	⊙
Target Shooting	⊙	⊙	⊙
Other	CHECK WITH DCR VISITOR CENTER		
Legend: ⊙ Prohibited; <input type="checkbox"/> Allowed with general restrictions (below); <input type="checkbox"/> Allowed with specific restrictions			

⊙ General public access on DCR lands is allowed through gates and bar-ways in designated areas only. Any activity which injures or defaces the property of the Commonwealth is strictly prohibited. Night access is allowed on DCR lands in the Ware River Watershed. These policies are based on Watershed Protection regulations, 350 CMR 11.00.
Ware River Reservation: all DCR-controlled lands and waters within Rts. 122, 122A, 56, 68, and 62.
Ware River Off-Reservation: DCR-owned lands within the Ware River Watershed located outside of Rts. 122, 122A, 56, 68, and 62.

Specific Restrictions for Public Access on DCR Lands in the Ware River Watershed	
<input type="checkbox"/> 1	Registered motorized vehicles are those registered for operation on public ways. Their access is restricted to certain maintained DCR roads at open gates. Motorized vehicles are prohibited on DCR roads beyond closed gates or bar-ways and within the Intake Zone.
<input type="checkbox"/> 2	Snowmobiles are allowed with specific restrictions on DCR designated snowmobile areas only. Restrictions include season, snow depth, and mph. DCR Designated Snowmobile Access Map is available from the Quabbin Visitor Center, Ware River Field Office, or on the DCR website listed below.
<input type="checkbox"/> 3	The operation of ORVs is prohibited on DCR-Watershed lands and roads.
<input type="checkbox"/> 4	Bicycling is allowed on DCR-Watershed roads. Off-road bicycling and off-road trail riding is prohibited. Bicycling is prohibited during mud season when DCR roads are closed by gates or signs. DCR Bicycle Access Map is available from the Quabbin Visitor Center, Ware River Field Office, or on the DCR website listed below.
<input type="checkbox"/> 5	Hunting is allowed with a valid Massachusetts hunting license according to State regulations. State regulations prohibit hunting on Sundays. Hunting within WMA has specific restrictions; see www.mass.gov/dfwel/dfw/regulations/regulations_wma.htm .
<input type="checkbox"/> 6	Fishing access is allowed with a valid Massachusetts fishing license according to State regulations.
<input type="checkbox"/> 7	DCR requests visitors to pickup and properly dispose of any fecal waste within 100' of a tributary or surface water.
<input type="checkbox"/> 8	Horseback riding access is allowed on DCR Designated Horseback Riding Routes only in the Ware River Watershed and according to specific restrictions (e.g., no riding during mud season, permit required for group rides of 15 or more, no watering of horses in tributaries, etc.); see Fact Sheet for additional information. DCR Designated Horseback Riding Roads and Trails Map is available from the Quabbin Visitor Center, Ware River Field Office, or DCR website listed below.
<input type="checkbox"/> 9	Motorboat use within waters of the Ware River Reservation (e.g., Whitehall Pond) is prohibited.
<input type="checkbox"/> 10	Motorboat access from DCR lands in the Ware River Off-Reservation is allowed according to the AIS Management Plan and with these restrictions: <ul style="list-style-type: none"> ➢ Motorboat access facilities (ramps) are provided only on DCR lands at the following locations – Brigham Pond, Demond Pond, Comet Pond, and Long Pond. ➢ Boat motor size off DCR ramps is limited to 20 hp (2 stroke) and 25 hp (4 stroke). ➢ DCR annually issues a limited number of DCR Long Pond Access Permits for boats with motors greater than 20 hp. This permit allows the holder to use a 20+ hp motor on Long Pond from Memorial Day to the last day in September between 10 AM and 6 PM.
<input type="checkbox"/> 11	Non-motorized boating access is allowed from DCR lands in the Ware River Reservation and Off-reservation according to the AIS Management Plan.
<input type="checkbox"/> 12	Limited swimming access is allowed within a designated area of Rutland State Park and Comet Pond Beach – DCR-Park managed facilities – according to posted restrictions and designated season.
<input type="checkbox"/> 13	Camping includes the use of tents, trailers, lean-tos, and motor homes. Camping access is prohibited within the Ware River Reservation. Limited camping on DCR Off-Reservation is allowed only with written permission from the Regional Director. Contact the Quabbin Visitor Center for more information at (413) 323-7221.
<input type="checkbox"/> 14	These activities are allowed only by written permission by the Quabbin Section Regional Director.
<input type="checkbox"/> 15	Groups up to 25 individuals are asked to notify DCR prior to access on DCR lands. Groups exceeding more than 25 individuals or 15 horseback riders with horses (in the Ware River Watershed only) are required to submit a DCR Group Access Permit application at least two weeks prior to access date. Contact Quabbin Visitor Center, Ware River Field Office, or DCR's website for an access permit application.
<input type="checkbox"/> 16	Geocache placement requires prior DCR-Watershed permission using self-verification process with registration described on Fact Sheet.
Contact information: <ul style="list-style-type: none"> ➢ Quabbin Visitor Center – Visit the Center at the Winsor Dam in Belchertown open 9-4:30 daily; (413) 323-7221. ➢ DCR Watershed Rangers – Contact the Watershed Rangers at (413) 323-0191 or mobile (617) 828-2452. ➢ Massachusetts State Police – Report violations/emergencies to the State Police at 911 ➢ DCR-Watershed website – www.mass.gov/dcr/water/water/watershed/water.htm 	

Environmental Planning

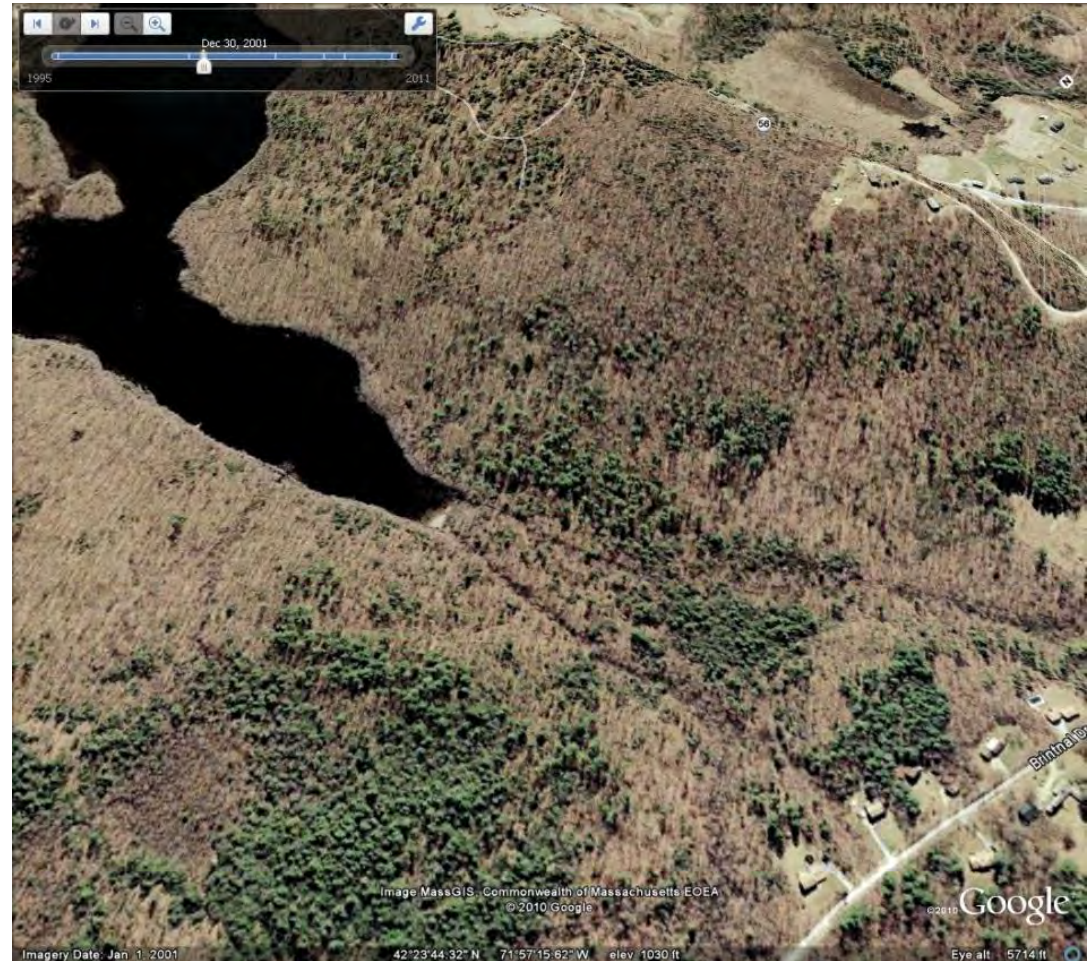


WsPA Enforcement: Bear Hill

DCR has worked with DEP and the Attorney General for over six years to control the environmental damages from this construction site in the Ware River watershed.

2004:

Proposed 53 houses on 71 acres on steep hill adjacent to Moulton Pond in Rutland.

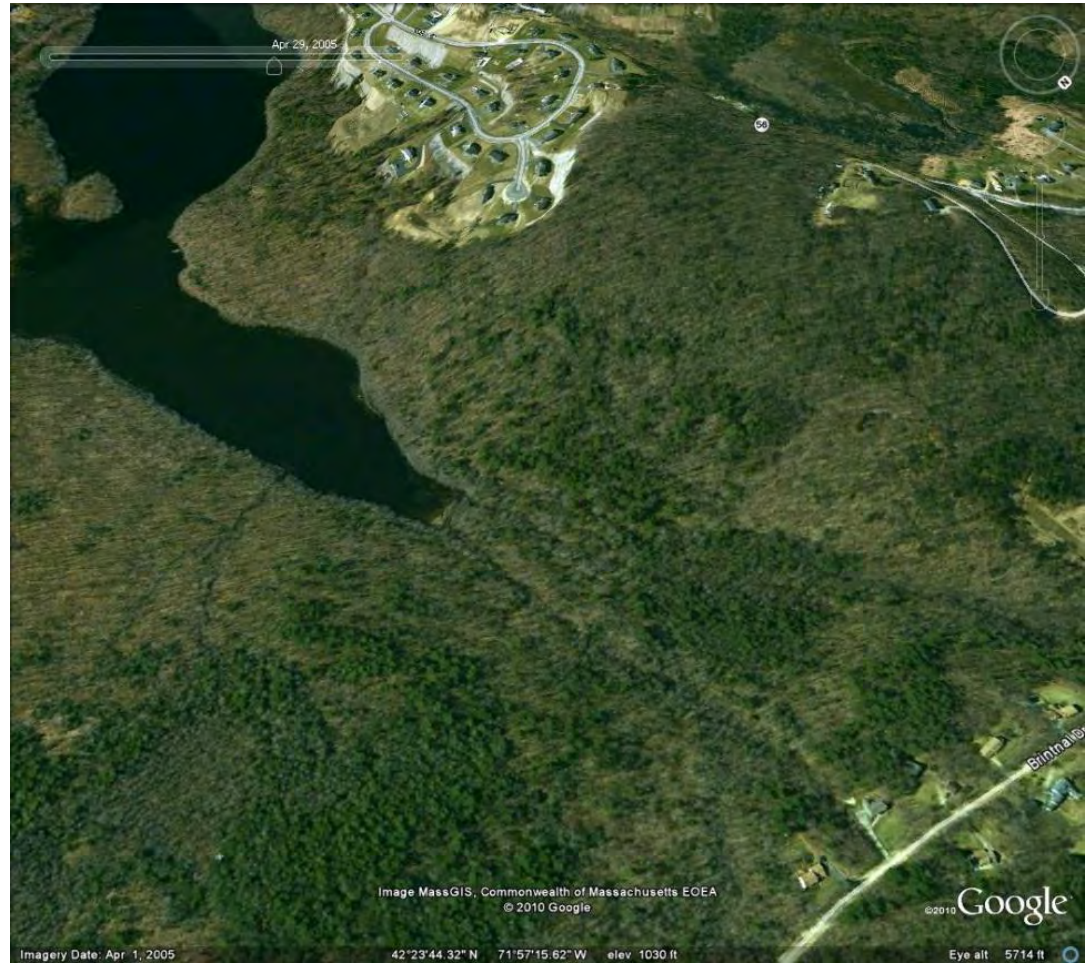


2001

WsPA Enforcement: Bear Hill

2005-2006:

Initial application for local (Zoning and Wetlands), state (Watershed Protection Act), and federal (401 Water Quality Certification) permits.



2005

WsPA Enforcement: Bear Hill

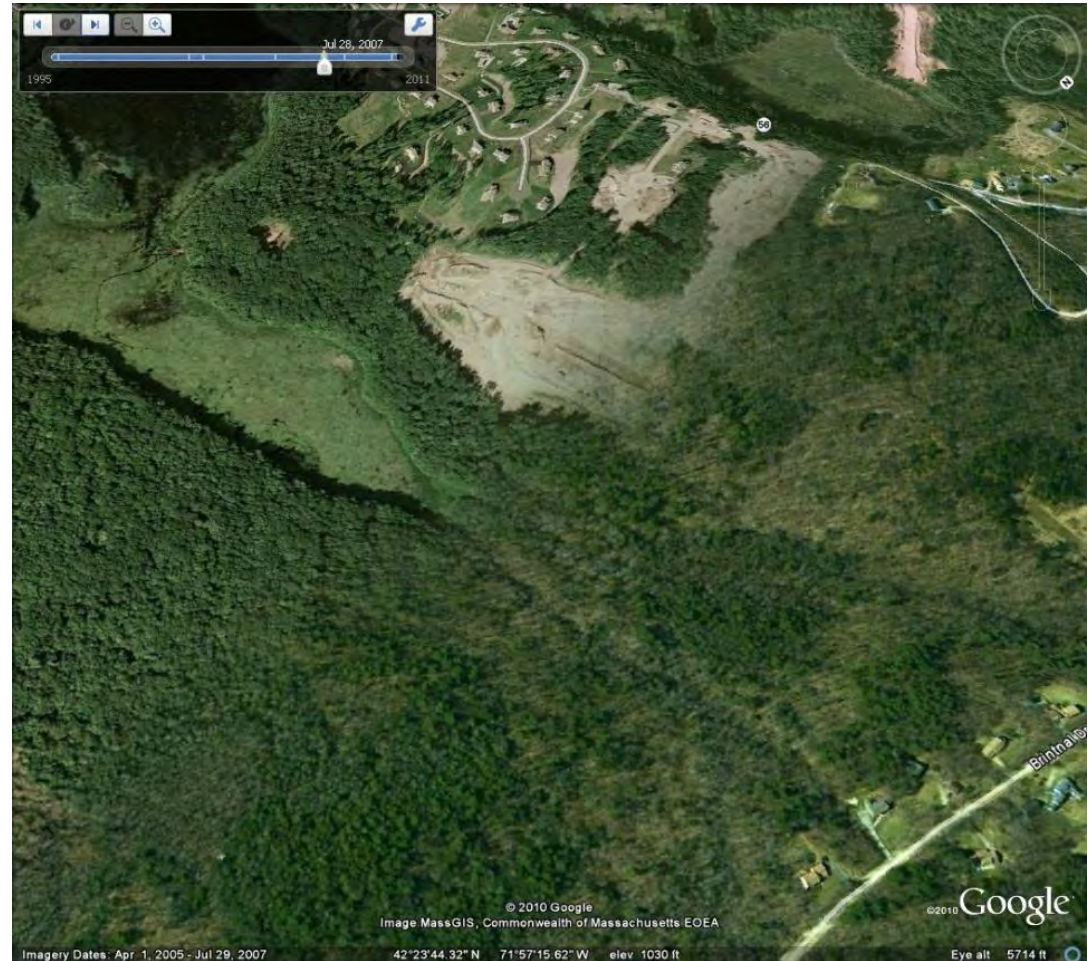
Fall 2006: Construction Begins

- *October – Immediate erosion problems identified by DCR.*
- *November – DEP investigation.*
- *December – Initial state enforcement action.*

2007: Attorney General files complaint after one year of efforts to stop environmental degradation.



One of the first erosion events, November 2006



2007

WsPA Enforcement: Bear Hill

2008 - 2010: Ongoing Enforcement

- *New permits granted with focus on improved erosion control measures.*
- *WsPA encroachment resolved without court involvement.*
- *Wetland and water quality violations proceed to Superior Court.*



Overwhelmed erosion controls with sediments flowing through wetland to Moulton Pond, November 2008.



2008

WsPA Enforcement: Bear Hill

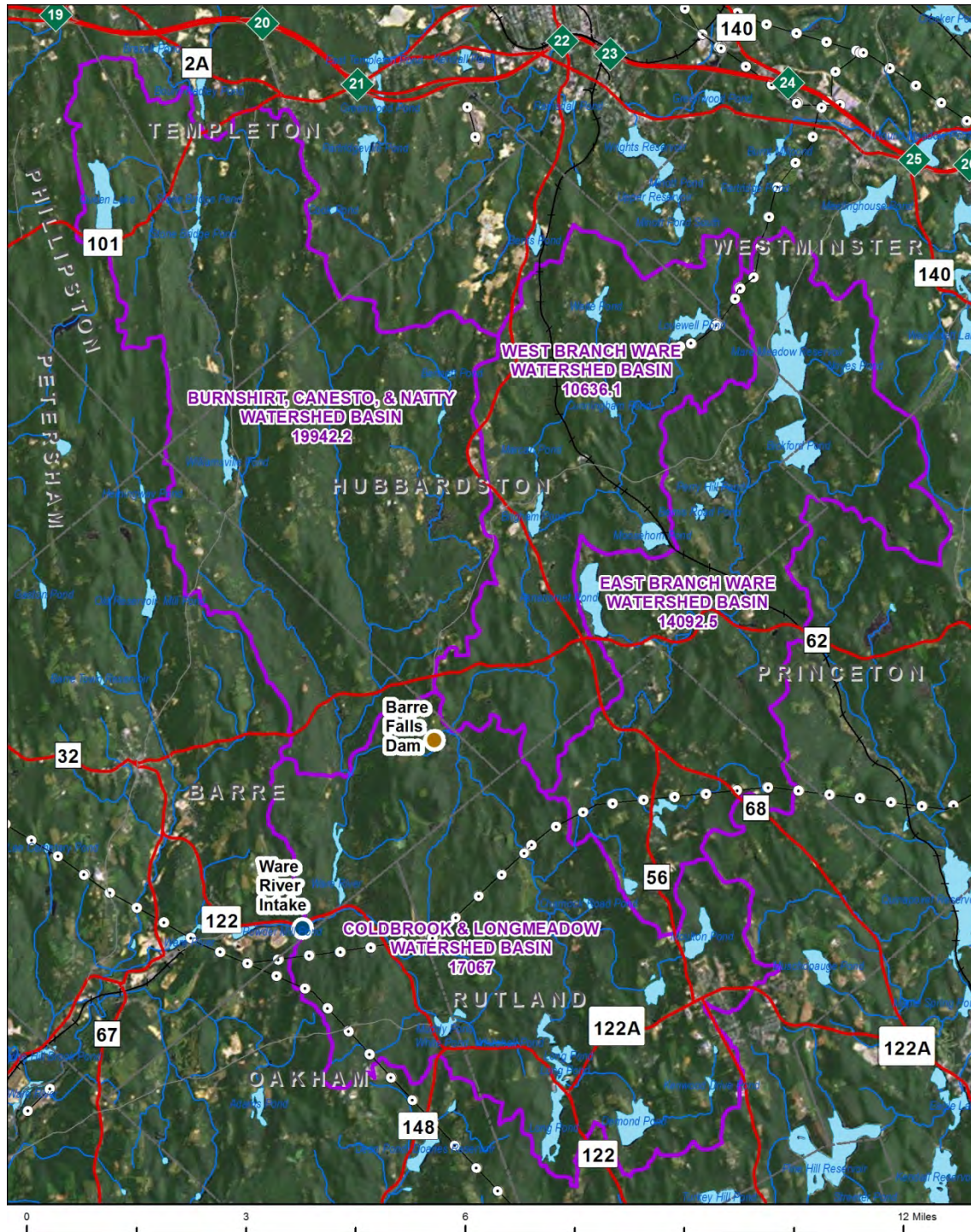
2011- 2012:

Builder found guilty of violating both the Watershed Protection Act and the Wetlands Protection Act by MA Superior Court.

- *Monetary penalty of \$193,656, \$125,000 of which is due up front. The remaining amount is suspended pending compliance with the other work.*
- *Court order to repair damages to wetlands and Moulton Pond and implement a soil erosion plan.*
- *Court order for no further violations*
- *Site access for enforcement.*



2010



0 3 6 12 Miles

Questions?

