

Posted 03/21/2019

Meeting Materials





***Annual Update on Infiltration/Inflow
Financial Assistance Program***

March 20, 2019



MWRA I/I Local Financial Assistance Program



Infiltration

(Groundwater via physical defects)



Inflow

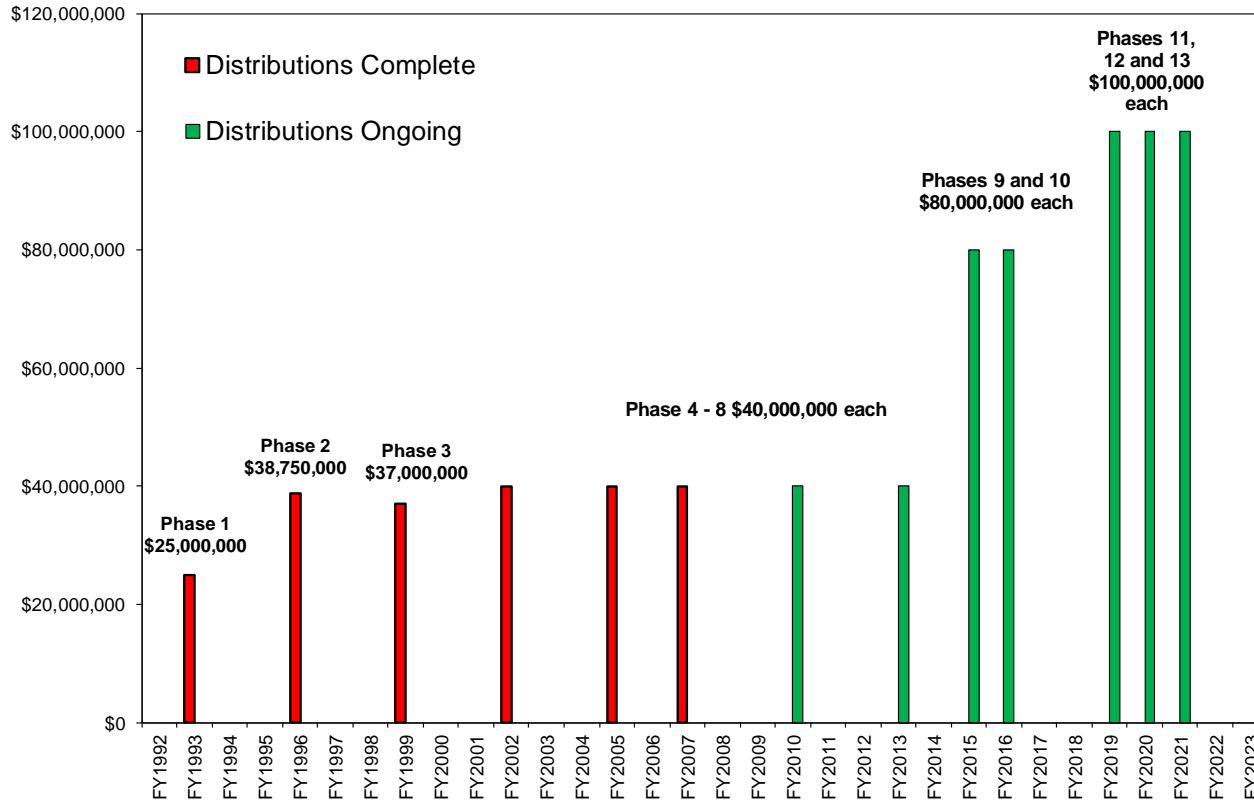
(Stormwater via direct connections)

Goal: Rehabilitation of Local Sewer Systems and Long-Term Reduction of Infiltration and Inflow



MWRA's Long-Term Commitment to Fund I/I Reduction

I/I Local Financial Assistance Program
Timing of Phases





MWRA I/I Local Financial Assistance Program Funding Summary

MWRA I/I LOCAL FINANCIAL ASSISTANCE PROGRAM FUNDING SUMMARY AS OF FEBRUARY 2019

Community	Total Allocations (Phases 1 - 13)	Total Distributions (Phases 1 - 13)	Percent Distributed	Funds Remaining
Arlington	\$13,703,000	\$8,423,000	61%	\$5,280,000
Ashland	\$3,818,500	\$1,742,450	46%	\$2,076,050
Bedford	\$5,654,600	\$1,999,600	35%	\$3,655,000
Belmont	\$8,255,100	\$2,992,100	36%	\$5,263,000
Boston	\$218,001,200	\$94,112,776	43%	\$123,888,424
Braintree	\$14,419,000	\$8,359,000	58%	\$6,060,000
Brookline	\$21,355,200	\$7,666,200	36%	\$13,689,000
Burlington	\$8,432,800	\$5,102,800	61%	\$3,330,000
Cambridge	\$39,250,100	\$28,830,100	73%	\$10,420,000
Canton	\$6,635,900	\$2,675,900	40%	\$3,960,000
Chelsea	\$11,760,100	\$5,551,100	47%	\$6,209,000
Dedham	\$9,220,000	\$5,740,000	62%	\$3,480,000
Everett	\$13,381,500	\$6,650,500	50%	\$6,731,000
Framingham	\$20,375,000	\$8,803,910	43%	\$11,571,090
Hingham	\$2,802,500	\$2,022,500	72%	\$780,000
Holbrook	\$2,779,600	\$996,562	32%	\$1,883,038
Lexington	\$12,125,300	\$9,005,300	74%	\$3,120,000
Malden	\$20,683,900	\$5,641,900	27%	\$15,042,000
Medford	\$19,637,600	\$7,961,600	41%	\$11,676,000
Melrose	\$10,126,300	\$7,157,300	71%	\$2,969,000
Milton	\$9,014,500	\$5,564,500	62%	\$3,450,000
Natick	\$9,332,600	\$5,582,600	60%	\$3,750,000
Needham	\$9,977,600	\$3,218,600	32%	\$6,759,000
Newton	\$34,937,400	\$25,777,400	74%	\$9,160,000
Norwood	\$11,589,400	\$6,879,400	59%	\$4,710,000
Quincy	\$32,780,000	\$23,302,039	71%	\$9,477,961
Randolph	\$10,070,800	\$3,894,800	39%	\$6,176,000
Reading	\$7,749,100	\$4,629,100	60%	\$3,120,000
Revere	\$16,940,900	\$5,502,900	32%	\$11,438,000
Somerville	\$25,955,800	\$10,117,800	39%	\$15,838,000
Stoneham	\$7,829,900	\$5,889,900	75%	\$1,940,000
Stoughton	\$7,902,900	\$5,122,900	65%	\$2,780,000
Wakefield	\$9,806,900	\$6,493,310	66%	\$3,313,590
Walpole	\$6,110,000	\$3,042,000	50%	\$3,068,000
Waltham	\$22,282,400	\$11,377,400	51%	\$10,905,000
Watertown	\$10,155,800	\$5,235,800	52%	\$4,920,000
Wellesley	\$9,249,700	\$3,582,504	39%	\$5,667,196
Westwood	\$4,302,300	\$2,091,300	49%	\$2,211,000
Weymouth	\$19,100,900	\$9,425,900	49%	\$9,675,000
Wilmington	\$4,232,000	\$1,606,000	38%	\$2,626,000
Winchester	\$6,793,000	\$4,183,000	62%	\$2,610,000
Winthrop	\$5,553,400	\$3,066,900	55%	\$2,486,500
Woburn	\$16,665,500	\$12,685,500	76%	\$3,980,000
Totals	\$760,750,000	\$389,606,151	51%	\$371,143,849

- \$760.75 million approved (13 Phases)
- \$390 million distributed (FY93 – February 2019)
- \$169 million loans repaid to MWRA
- All 43 communities participating
- 565 local projects funded
- 504 projects complete, 61 ongoing
- Community allocation based on % share sewer charge



I/I Funding Results of Local Projects

- TV Inspection of Sewers – 2,074 miles





TV Inspection Location of Infiltration into Sewer Pipelines





I/I Funding for Rehabilitation of Local Sewers

- 219 Miles of Sewer Cured-In-Place Pipe (CIPP) Liner Installed





I/I Funding for Rehabilitation of Local Sewers

- 18,187 Manholes Rehabilitated/Sealed





Inflow into Manholes





I/I Funding for Rehabilitation of Local Sewers

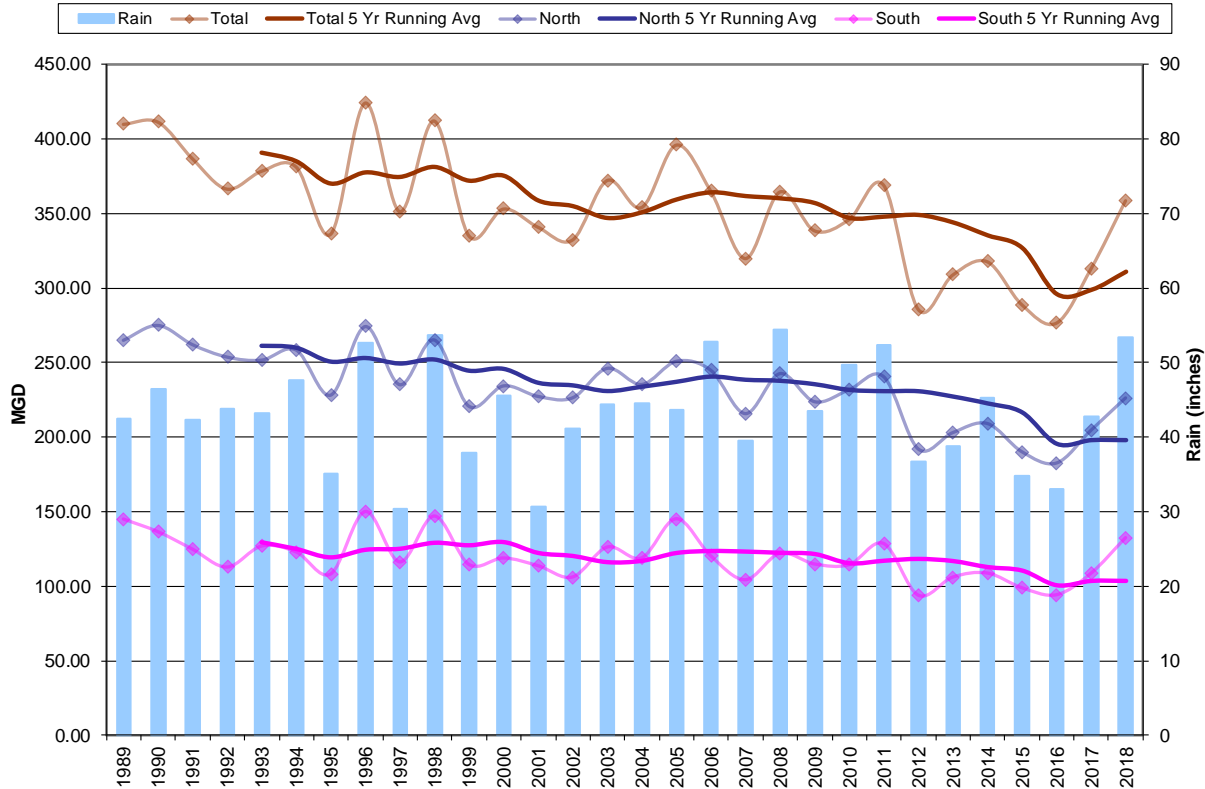
- 1,331 Miles of Sewer Smoke Tested
- 1,060 Catch Basins Disconnected from Sewer





MWRA Long-Term Regional Flow Data – Gradual Decrease in Flow

MWRA Long-Term Regional Flow Data
NOAA Annual Rainfall at Logan Airport





Percent Change in Wastewater Flow – 20 Year Snapshot

ATTACHMENT 4

Sewered Population and Wastewater Flow Comparison from 1997/1998 to 2016/2018

Community	2016/2018 Average Sewered Population	Change in Population from 1997/1998 Sewered Population	% Change in Population from 1997/1998 Sewered Population	2016/2018 Average ADF	Change in Flow from 1997/1998 Average ADF	% Change in Flow from 1997/1998 Average ADF
Arlington	44,504	892	69.0%	4.62	1.54	-25.0%
Ashland	13,583	5,560	20.0%	0.49	0.49	-15.0%
Bedford	13,895	2,270	8.0%	2.50	-0.43	-39.0%
Belmont	25,352	1,813	18.0%	2.85	-11.80	-12.0%
BWSC TOTAL	658,579	100,743		90.09	0.94	6.0%
BWSC South	128,791			17.72	-12.75	-15.0%
BWSC North	529,788			72.36	0.79	12.0%
Braintree	36,804	2,270	7.0%	7.28	-0.09	-15.0%
Brookline TOTAL	59,068	5,148	10.0%	8.19	-0.96	-42.0%
Brookline South	37,426			5.21	-2.14	-3.0%
Brookline North	21,641			2.98	-0.12	-7.0%
Burlington	25,299	2,981	13.0%	3.47	-1.40	-18.0%
Cambridge	108,854	15,341	16.0%	17.93	-0.69	-18.0%
Canton	15,406	10,555	70.0%	3.03	0.83	-40.0%
Chelsea	38,135	1,469	25.0%	5.38	-2.50	-16.0%
Dedham	23,738	8,917	14.0%	3.69	-1.00	-13.0%
Everett	43,888	8,523	7.0%	5.24	-1.15	-3.0%
Frammingham	68,219	1,814	35.0%	7.44	-0.05	8.0%
Hingham	6,989	2,674	18.0%	1.33	0.07	-29.0%
Holbrook	9,773	4,977	15.0%	0.92	-1.96	-5.0%
Levington	32,486	7,875	2.0%	4.85	-0.48	-26.0%
Malden	60,371	1,000	1.0%	8.73	-2.58	-1.0%
Melrose	57,134	393	12.0%	7.26	-0.04	-33.0%
Milton TOTAL	27,792	2,884		4.21	-1.59	-32.0%
Milton South	26,614			3.32	-1.01	-39.0%
Milton North	24,330			0.29	-0.18	-26.0%
Natick	2,330	5,989	23.0%	2.95	-1.02	-39.0%
Needham	2,285	3,562	14.0%	3.67	-5.75	-28.0%
Needham TOTAL	31,726	9,298	12.0%	8.88	-3.15	-30.0%
Newton	28,607			6.04	-2.59	-6.0%
Newton TOTAL	87,530			5.99	-2.77	-17.0%
Newton South	51,952			13.41	-0.77	-5.0%
Newton North	35,578			3.50	-0.16	-13.0%
Norwood	28,867	315	10.0%	3.03	-0.95	-10.0%
Quincy	93,591	3,082	17.0%	6.32	-1.19	-36.0%
Randolph	33,483	3,708	28.0%	10.53	-1.66	-15.0%
Reading	25,057	11,591	8.0%	2.93	-0.57	-19.0%
Revere	53,240	5,781	0.0%	3.14	-1.08	-17.0%
Somerville	80,063	43	15.0%	4.25	-0.43	-18.0%
Stoneham	21,535	2,634	11.0%	2.09	-1.98	-28.0%
Stoughton	19,672	2,644	32.0%	8.81	-1.36	-27.0%
Wakefield	26,335	4,371	8.0%	3.43	-1.22	-1.0%
Waltham	18,167	4,559	3.0%	3.26	-0.03	-10.0%
Waltham	61,716	1,053	13.0%	1.78	-0.96	-16.0%
Wellesley	33,511	3,262	34.0%	8.54	-0.27	-28.0%
Weymouth	28,409	3,673	7.0%	1.42	-0.90	-7.0%
Weymouth	14,609	3,309	62.0%	2.28	-0.17	-37.0%
Wilmington	54,006	1,853	10.0%	2.12	-3.71	-37.0%
Winchester	4,834	2,131	5.0%	6.22		
Woburn	22,729	863	9.00%			
Woburn	18,151	3,077	14.0%			
Woburn	38,423					
TOTAL	2,220,415	273,730	14.0%	308.10	-59.68	-16.0%



Largest Flow % Decrease

Dedham 40%

Belmont 37%

Needham 39%

Woburn 37%

Stoneham 36%

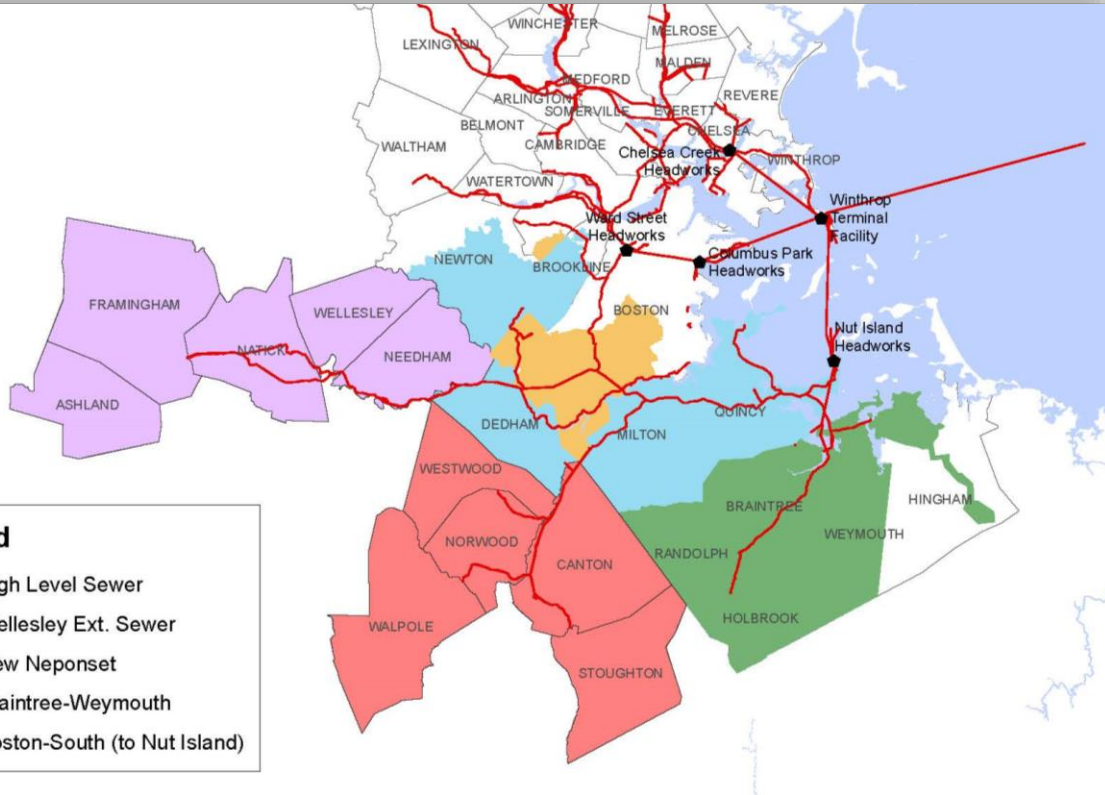
Milton 33%

Nine 25-30%

Communities



South System by Subarea: Percent Change in Wastewater Flow - 20 Year Snapshot



Legend

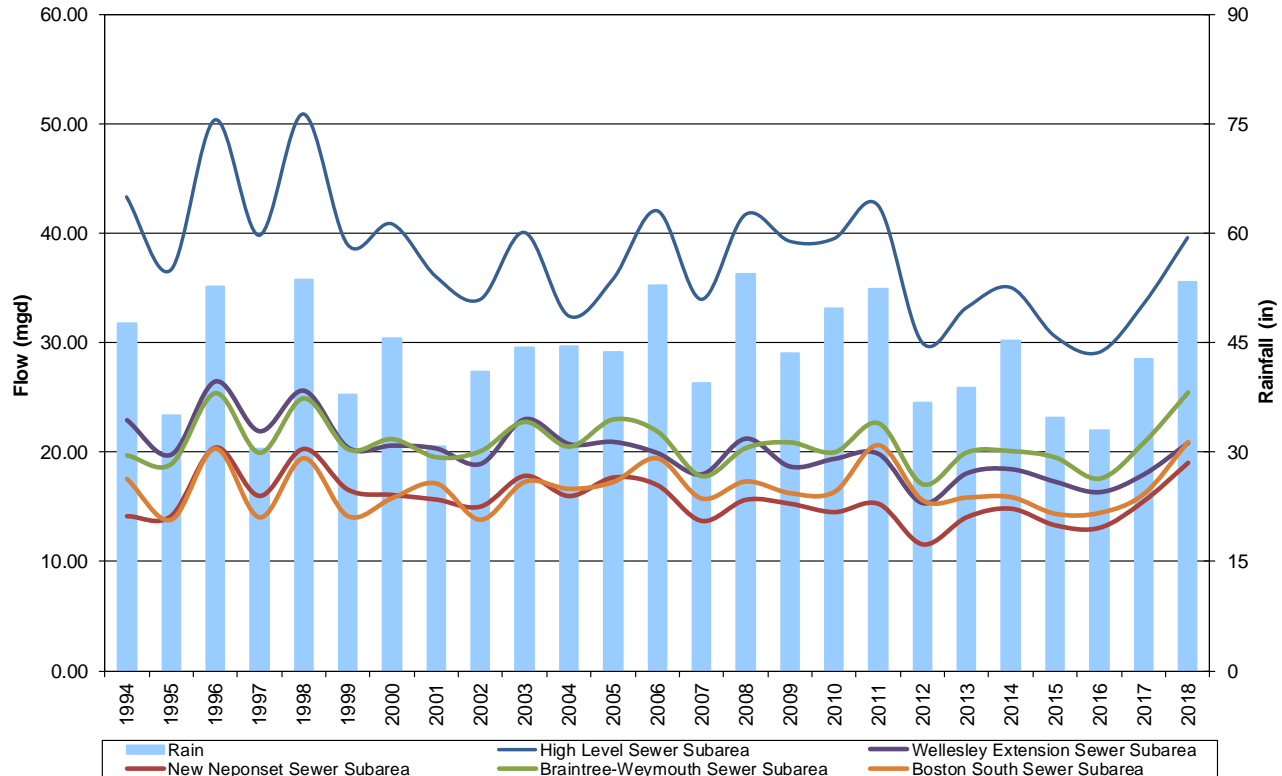
- High Level Sewer
- Wellesley Ext. Sewer
- New Neponset
- Braintree-Weymouth
- Boston-South (to Nut Island)

- High Level Sewer: - 24%
Newton-South, Brookline-South, Dedham, Milton, Quincy
- Wellesley Extension Sewer: - 22%
Ashland, Framingham, Natick, Needham, Wellesley
- New Neponset Sewer: - 11%
Canton, Norwood, Stoughton, Walpole, Westwood
- Braintree/Weymouth Sewer: - 4%
Braintree, Hingham, Holbrook, Randolph, Weymouth
- Boston-South: + 6%



South System Subareas

**South Collection System Sewer Subareas
Long-Term Annual Flow Data - NOAA Rainfall at Logan Airport**







***Combined Heat and Power Study
Deer Island Treatment Plant
Contract 6963A***

March 20, 2019



Deer Island Energy Supply

- Cross Harbor Electrical Cable
(primary power)
- Fuel oil
(CTGs as backup power)
- Digester gas from sludge
(combined heat and power)
- Hydro
- Wind
- Solar





Energy Generation Equipment



Combustion Turbine Generators



Steam Boilers



Energy Generation Equipment



Back Pressure Steam Turbine Generator

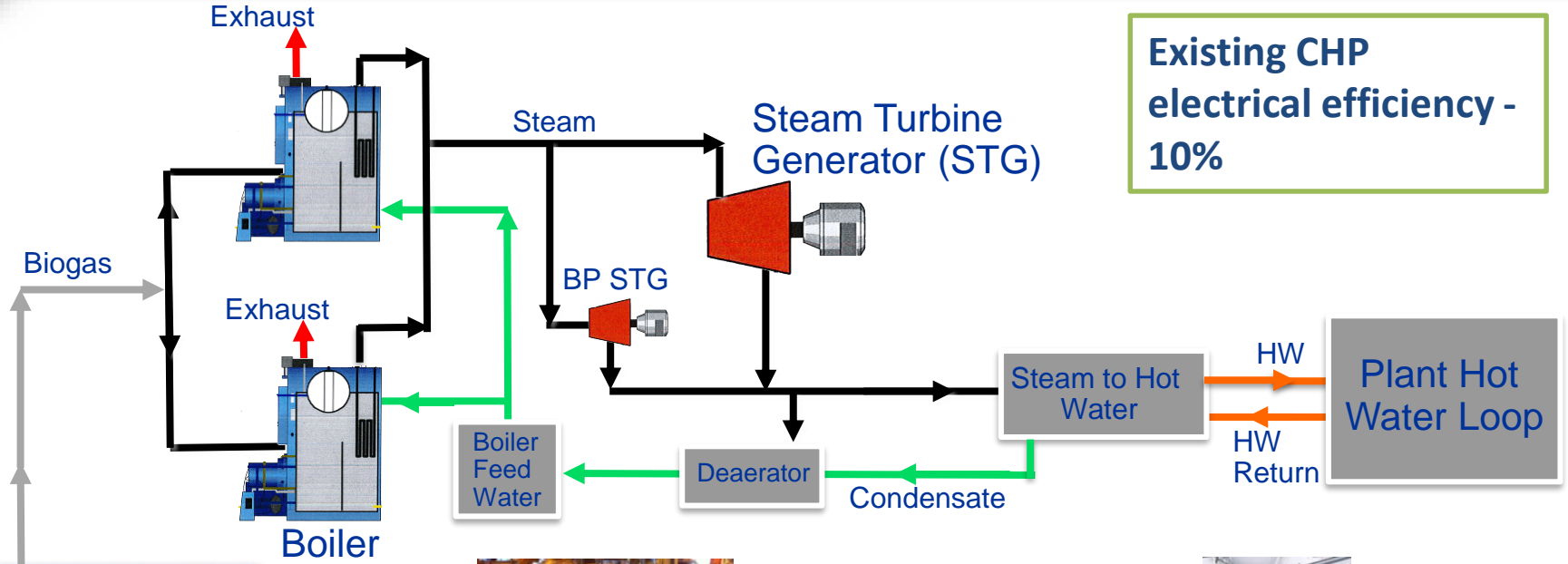


Steam Turbine Generator



Existing On Site Thermal/Power Plant Schematic

Existing CHP
electrical efficiency -
10%



Biogas Treatment



Biogas Booster Blowers



Gas Storage



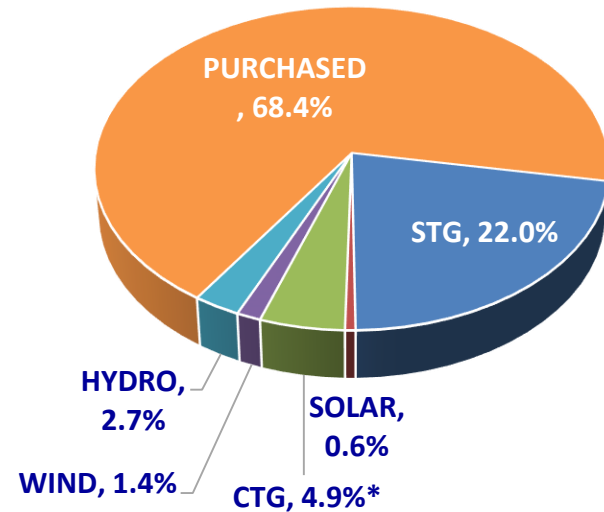
Digesters



Electrical Supply Breakdown

- Produced 27%* of electricity with renewable energy in FY17 & FY18
- Deer Island electrical demand reduced 14% since FY09

Electrical Supply by Source

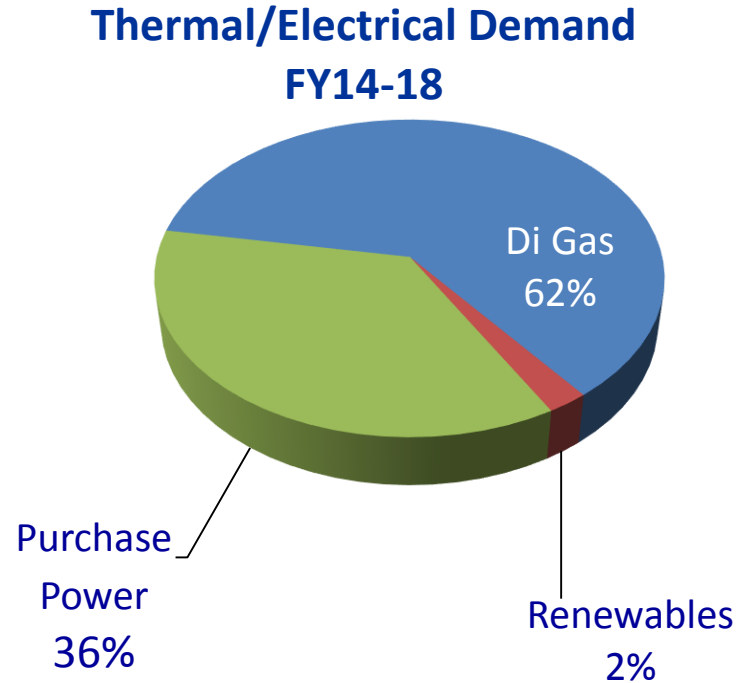


* Electricity produced by CTG (4.9%) not considered as renewable energy



Total Energy Supply Breakdown (Thermal + Electrical)

- Digester gas meets 95% of the plant's thermal demand
- Produced 64% of thermal and electricity demand with renewable energy





Project Justification

- Existing equipment is nearing end of useful life
- Increased energy efficiency (newer technology)
- Potential energy cost savings
- Plan for Deer Island's energy supply future





Contract 6963A will:

- Evaluate existing energy infrastructure;
- Evaluate commodities and future energy market projections
- Evaluate multiple future energy alternatives by creating:
 - Conceptual designs
 - Performance simulations
 - Economic analyses
- Will influence decision making for long-term energy plan



Energy System Alternatives

- Alternative Group 1: Existing Equipment with new electrical and natural gas supplies (4 Alternatives)
- Alternative Group 2: New CHP with existing fuels (4 Alternatives)
- Alternative Group 3: New CHP with the addition of natural gas (3 Alternatives)
- Alternative Group 4: Consultant Proposed Alternatives (2 Alternatives)



What Does This Really Mean?

- Compare options for cost competitiveness
 - Direct replacement of all equipment; vs
 - New fuel/power sources; vs
 - Installation of a new combined heat and power system
- New system could increase electrical generation 3 to 4 fold
- Deer Island renewables percentage could increase from 64% to >90%



Contract 6963A – Deer Island Combined Heat & Power Study

Recommended Consultant:	Black & Veatch
Price:	\$1,149,500
Contract Term:	15 Months





***Biosolids Processing Facility
Capital Improvements
Contract 7153***

March 20, 2019



Biosolids Processing Facility



- Construction completed in 1991
- Operated by New England Fertilizer Company (under contract)
- Contract includes \$7 million set aside for capital improvements

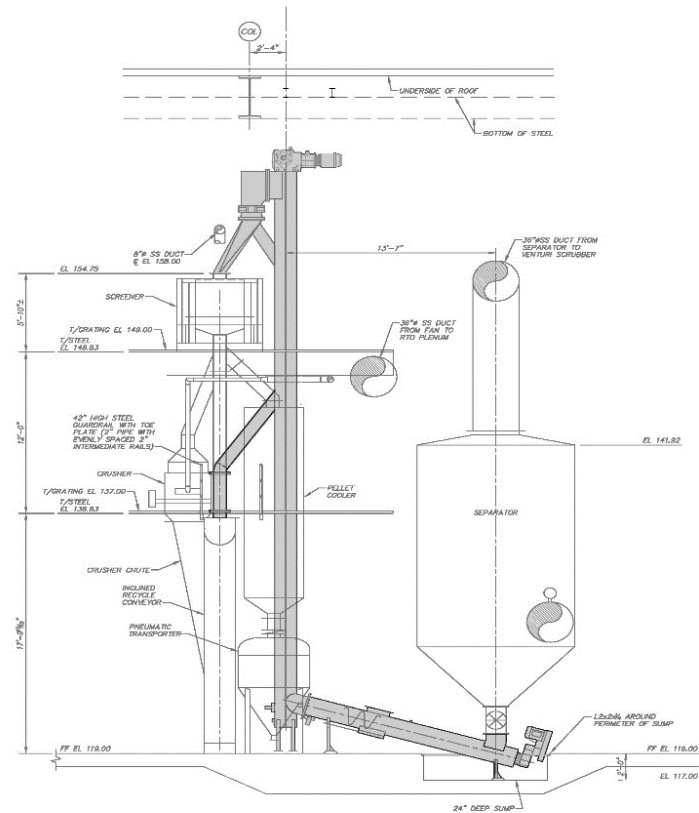


Contract 7153 Summary

- Contract will replace:
 - Separator Conveyors (9 of 12)
 - Dust Collection, Air Compressor and Nitrogen Purge Systems
 - Dome Cover Braces (4 storage tanks)
 - Gas Boiler
 - Sludge Dryer Drums (3)
 - Electrical Modifications



Separator Conveyor





Dust Collector System



Dust Collectors



Nitrogen Purge Generator
(fire suppression system)



Additional Work



Sludge Tank Roof Cover
(braces under roof cover)



Gas Boiler



Sludge Processing Rotary Dryers





Summary

- **Bids Received:**

<i>Engineer's Estimate</i>	<i>\$7,850,200</i>
IPC Lydon, LLC	\$8,681,776
Walsh Construction Co. II	\$9,101,495
Waterline Industries Corp.	\$9,577,677

- **Contractor:** IPC Lydon, LLC. (lowest responsive bidder)
- **Contract Price:** \$8,681,776.00 (+15% Design/Construction Administration fee)
- **Contract Duration:** 500 days





***Annual Update on Local Water System
Financial Assistance Program***

March 20, 2019



MWRA Local Water System Assistance Program



Unlined Cast-Iron Tuberculated Pipe

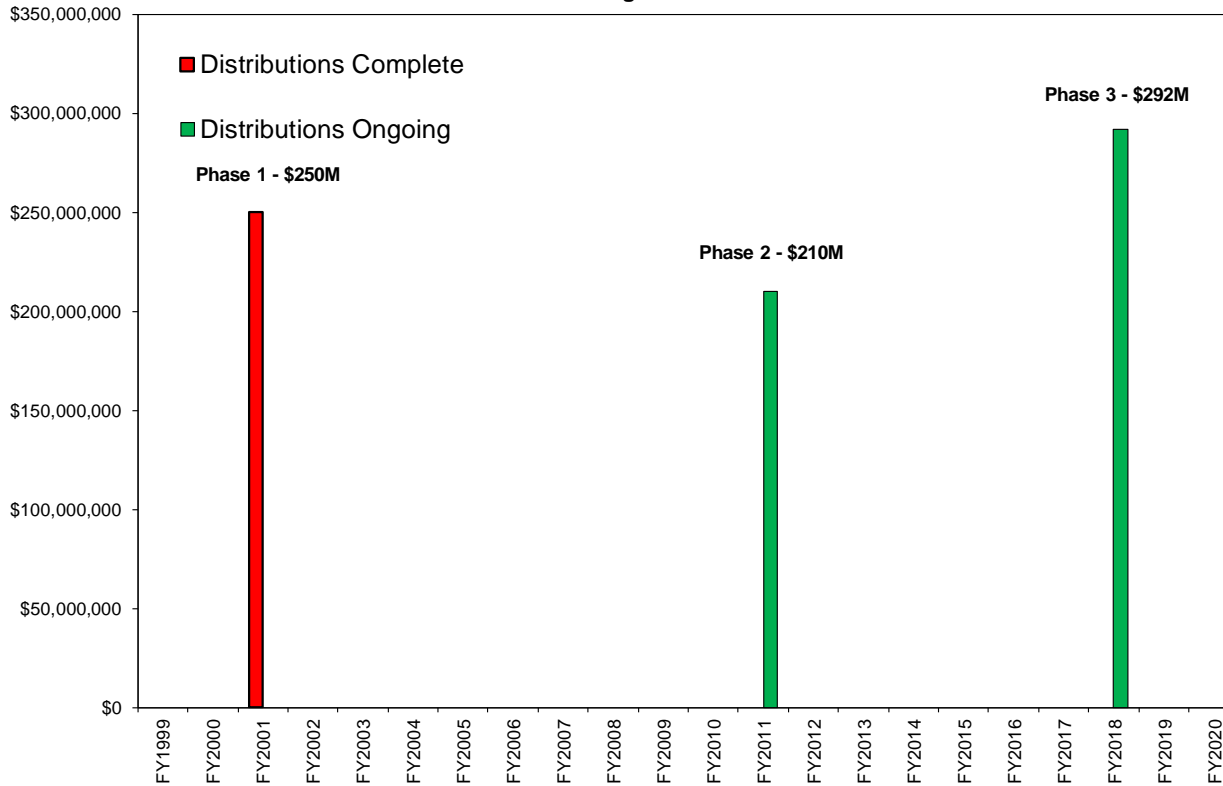
Cement-Lined Pipe

- Goal – Rehabilitation of local water systems to prevent loss of disinfectant residual



MWRA's Long-Term Commitment to Fund Local Water System Rehabilitation

Local Water System Assistance Program
Timing of Phases





MWRA Local Water System Assistance Program Funding Summary

MWRA LOCAL WATER SYSTEM ASSISTANCE PROGRAM ALLOCATION AND FUND UTILIZATION BY COMMUNITY THROUGH FEBRUARY 2019

Community	Community Total Allocation Phases 2 and 3	Total Distributions Phases 2 and 3	Percent Distributed	Funds Remaining
Arlington	\$14,912,000	\$4,400,000	30%	\$10,512,000
Bedford *	\$6,067,000	\$2,418,000	40%	\$3,649,000
Belmont	\$7,329,000	\$4,477,000	61%	\$2,852,000
Boston	\$91,541,000	\$45,174,098	49%	\$46,366,902
Brookline	\$8,011,000	\$660,000	8%	\$7,351,000
Canton *	\$6,187,000	\$2,000,000	32%	\$4,187,000
Chelsea	\$8,853,000	\$3,011,200	34%	\$5,841,800
Dedham/Westwood *	\$1,352,000	\$503,000	37%	\$849,000
Everett	\$10,970,000	\$4,441,000	40%	\$6,529,000
Frammingham	\$16,360,000	\$9,157,600	56%	\$7,202,400
Lexington	\$6,801,000	\$1,145,015	17%	\$5,655,985
Lynnfield Water Dist.	\$3,074,000	\$1,146,800	37%	\$1,927,200
Malden	\$17,877,000	\$1,774,000	10%	\$16,103,000
Marblehead	\$9,349,000	\$0	0%	\$9,349,000
Marlborough *	\$5,429,000	\$1,283,800	24%	\$4,145,200
Medford	\$17,759,000	\$2,075,000	12%	\$15,684,000
Melrose	\$10,853,000	\$4,419,000	41%	\$6,434,000
Milton	\$10,090,000	\$3,500,000	35%	\$6,590,000
Nahant	\$3,325,000	\$1,142,100	34%	\$2,182,900
Needham *	\$2,688,000	\$1,131,265	42%	\$1,556,735
Newton	\$34,439,000	\$10,881,600	32%	\$23,557,400
Northborough *	\$2,498,000	\$986,053	39%	\$1,511,947
Newwood	\$10,691,000	\$5,654,200	53%	\$5,036,800
Peabody *	\$3,845,000	\$3,845,000	100%	\$0
Quincy	\$24,757,000	\$11,679,459	47%	\$13,077,541
Reading	\$9,219,000	\$4,146,000	45%	\$5,073,000
Revere	\$10,349,000	\$6,050,000	58%	\$4,299,000
Saugus	\$16,309,000	\$4,012,054	25%	\$12,296,946
Somerville	\$18,210,000	\$5,898,234	32%	\$12,311,766
Southborough	\$3,432,000	\$0	0%	\$3,432,000
Stoneham	\$5,081,000	\$2,339,000	46%	\$2,742,000
Stoughton	\$6,053,000	\$2,506,000	41%	\$3,547,000
Swarmscott	\$9,031,000	\$3,949,468	44%	\$5,081,532
Wakefield *	\$5,681,000	\$3,325,000	59%	\$2,356,000
Waltham	\$25,197,000	\$5,520,201	22%	\$19,676,799
Watertown	\$6,723,000	\$3,478,000	52%	\$3,245,000
Wellesley *	\$5,618,000	\$241,569	4%	\$5,376,431
Weston	\$3,920,000	\$1,005,000	26%	\$2,915,000
Wilmington *	\$1,917,000	\$611,000	32%	\$1,306,000
Winchester *	\$2,276,000	\$775,000	34%	\$1,501,000
Winthrop	\$7,431,000	\$7,431,000	100%	\$0
Woburn *	\$6,496,000	\$2,591,000	40%	\$3,905,000
SUBTOTAL	\$478,000,000	\$180,783,716	38%	\$297,216,284
Chicopee	\$16,927,000	\$4,035,000	24%	\$12,892,000
South Hadley F.D. 1	\$3,464,000	\$2,038,000	57%	\$1,426,000
Wilbraham	\$3,509,000	\$0	0%	\$3,509,000
SUBTOTAL	\$24,000,000	\$6,073,000	25%	\$17,927,000
TOTAL	\$502,000,000	\$186,856,716	37%	\$315,143,284

- \$724 million approved (3 Phases)
- \$409 million distributed (FY01 – February 2019)
- \$260 million loans repaid to MWRA
- 42 communities participating
- 446 local projects funded
- 386 projects complete, 80 ongoing
- Community allocation based on % share water charge and % share unlined pipe

* Partially Served Communities



MWRA Funding for Local Water Projects



Water Main Replacement Construction

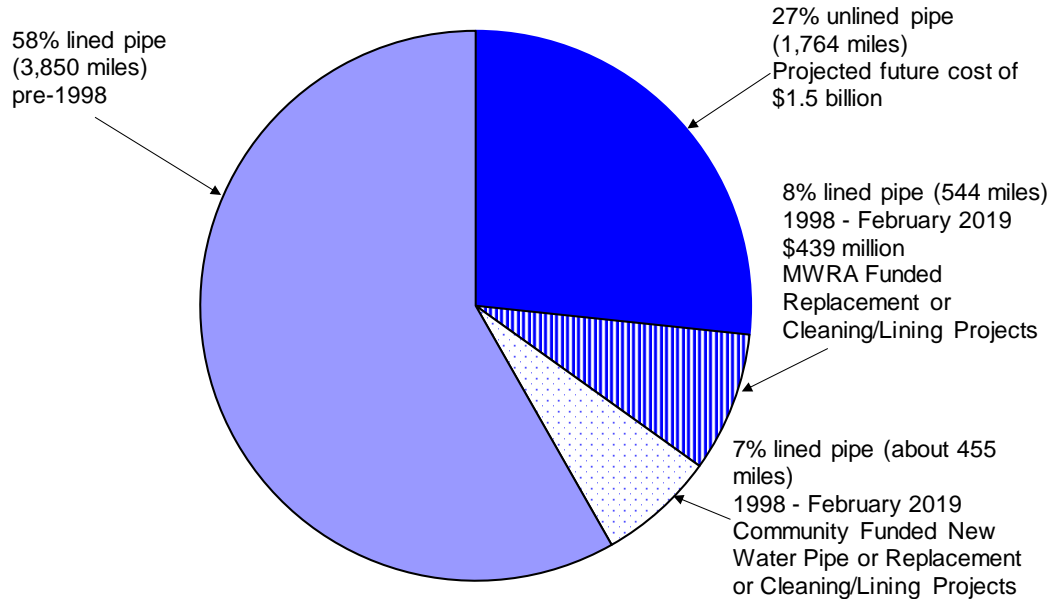


Water Storage Tank Rehabilitation



MWRA Funding for Local Water Projects

Regional Water System Lined and Unlined Pipe
6,613 Miles of Community Water Mains
Updated as of February 2019



- Remaining unlined pipe represents a \$1.5 billion future cost



Lead Service Line Replacement Loan Program

- \$100 million in 10-Year, Interest-Free Loans
- Fully Replace Lead Service Lines
- Distributed \$10.1 million to 9 Communities to date:
 - Quincy: \$1.5 million in FY17
 - Winchester: \$500,000 in FY17, \$500,000 in FY18
 - Newton: \$4.0 million in FY17
 - Marlborough: \$1.0 million in FY18
 - Revere: \$195,000 in FY18
 - Winthrop: \$284,000 in FY18
 - Needham: \$1.0 million in FY18
 - Everett: \$1.0 million in FY19
 - Chelsea: \$100,000 in FY19







***Memorandum of Agreement with
the City of Newton
Regarding Contract 6392***

March 20, 2019

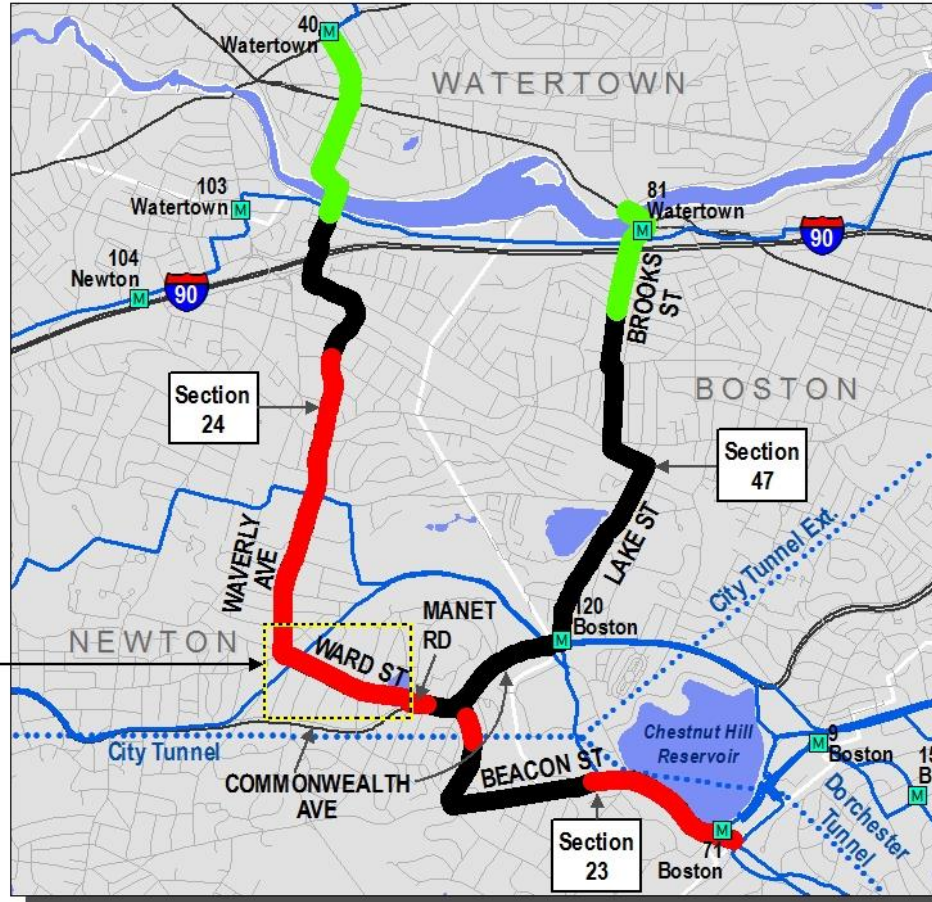


Memorandum of Agreement with the City of Newton

Legend

-  Pipe Replacement Limits
-  Pipe Cleaning & Lining Limits
-  To Be Rehabilitated in Future Contract

Memorandum of Agreement





MWRA Contract 6392

Pipeline	Age (years)	Diameter (inches)	Length
City of Newton	140	20	2,400
MWRA Section 23	122	36	8,100
MWRA Section 24	122	20	9,391
MWRA Section 47	101	20	8,200

- Replace approximately 2,400 linear feet of City of Newton's water main
- Ward Street – between Manet Road and Waverly Avenue



Existing Conditions – MWRA Sections 23 and 24



Section 23
36-inch Cast Iron Main
Ward Street, Newton



Section 24
20-inch Cast Iron Main
St. James Terrace, Newton



- Cost Estimate:

Newton work	\$2.7 million
MWRA work	\$14.5 million
Total	\$17.2 million

- Schedule:

- Awaiting National Grid's firm schedule for relocation of gas mains (60% of pipe routing)



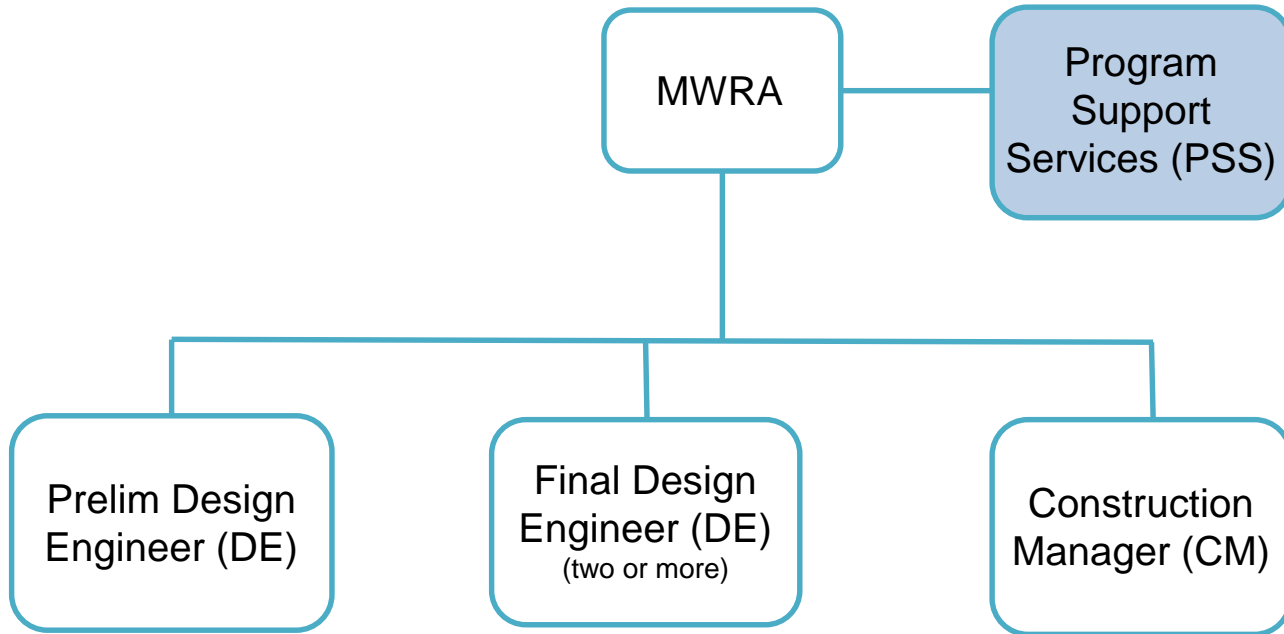


***Metropolitan Tunnel Redundancy
Program Support Services Contract Award
and
Program Update***

March 20, 2019



Program Support Services Contract Award





Program-Wide Support Services

- Program-wide planning
- Risk management planning
- Quality management
- Design criteria and standardization
- Independent design review
- Design and Construction package planning
- Critical path scheduling, and
- Budget planning and management





Procurement Process

- Industry Outreach, pre-procurement:
 - American Council of Engineering Companies of Massachusetts (ACEC/MA)
 - George A. Fox Conference (annual national tunneling conference in NYC)
- RFQ/P Notice:
 - Central Register, Boston Herald, Banner Publications and El Mundo
 - Written notice was sent to over 35 engineering firms
 - 49 firms requested copies of the RFQ/P



Evaluation Criteria

- Cost (20 points)
- Qualifications and Key Personnel (20 points)
- Experience/Past Performance on Similar Non-Authority projects and Past Performance on Authority Projects (20 points)
- Technical Approach (20 points)
- Capacity/Organization and Management Approach (17 points)
- MBE/WBE Participation (3 points)



RFQ/P Response

- One proposal received
- Reasons for not submitting:
 - 12 firms to pursue future contracts
 - Other firms
 - Insufficient local personnel
 - Qualified personnel already committed
 - Small firms not qualified as a prime consultant
 - interested as subconsultants
- Re-procuring not likely to yield additional competition



JCK Underground Proposal Review

- Exceeds minimum qualifications
- Extensive experience with deep rock water/waste water tunnel projects similar in size and scope
- Providing similar services for other agencies
 - DC Water
 - Alexandria VA
 - Allegheny County Sanitary Authority
 - Silicon Valley Clean Water



Key Personnel

- Project Manager:
 - Locally based
 - 30 years of experience, with over 25 years specializing in tunnels and underground structures
 - Significant roles on the **MWRA** Boston Harbor Project Tunnels, MetroWest Water Supply Tunnel, and the Braintree Weymouth Tunnel



Other Key Personnel

- Industry leaders in:
 - Risk management
 - Project delivery for large complex tunnel programs
- Locally based
- Past MWRA Tunnel experience includes:
 - Boston Harbor Project
 - MetroWest Water Supply Tunnel
 - Braintree-Weymouth Tunnel
- Added Key Personnel, beyond RFQ/P minimum requirements



Technical Approach and References

- Excellent understanding of the Tunnel Redundancy Program and the services that are required
- Thoughtful enhancements for consideration
- Numerous references
 - All references were excellent
 - Strong satisfaction
 - Responsive and would rehire!



Cost and Level of Effort

	JCK Underground, Inc.	Engineer's Estimate
Proposed Cost (initial 60-month term)	\$10,247,877.21	\$10,250,000
Level of Effort	34,743 hours	25,660 hours

- Allowances for two additional optional 2-year renewals with Board approval
- Total potential contract of \$17,497,877 over 9 years



Cost Analysis

- Overhead and profit are very competitive
- Average direct labor rate is lower than estimated
 - Mix of senior and mid-level staff
- Result is a much lower fully burdened billable rate than estimated
- Value for the \$!



Proposed Level of Effort

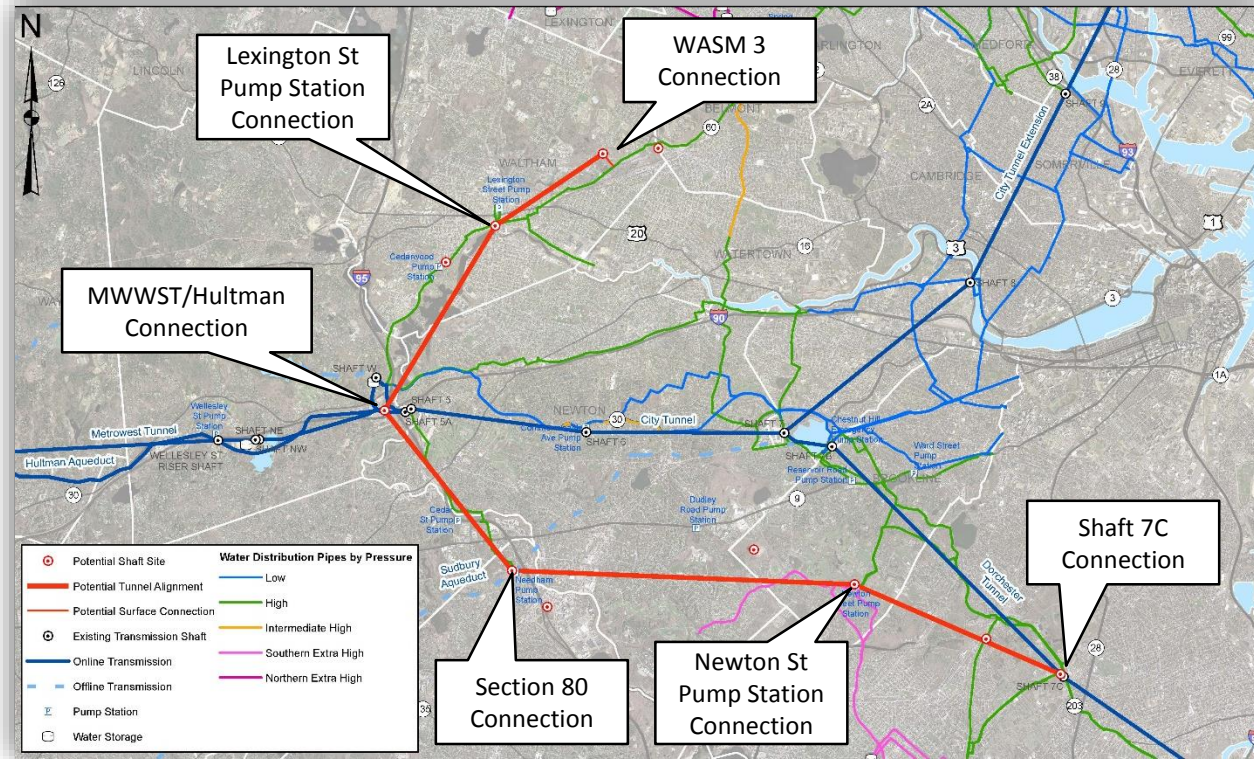
- JCK proposed a higher level of effort for certain tasks:
 - Project controls
 - Geotechnical database development
 - Incorporation of lessons learned into this project
 - Quality control of geotechnical field work
 - Independent review of design submittals
 - Risk management and mitigation planning
- Staff supports the increased level of effort for the proposed technical approach and staff mix



Revised Tunnel Alignment

The Tunnel Project Basics:

- 14 miles of deep rock tunnel
 - 4.5 mile to the north / WASM3
 - 9.5 miles to the south – Shaft 7C
- 10' finished diameter
- 200' – 500' below ground (well into bedrock)
- Revised shaft location provides redundancy to Section 80 (Needham and Wellesley)
- Shaft locations and alignment are preliminary and may change during Design





Hydraulic Model Update

- Adding all proposed CIP Water Projects
 - New pipelines
 - Rehabilitated pipelines
- Population and Employment Projections
 - 2040 and beyond
- Potential System Expansion
- Temporary Loss of Local Sources (Drought/Emergency)
- Water age/quality



Planned Schedule

- Program Support Services Consultant
 - Award - pending Board approval
 - Notice to Proceed: April 1, 2019

- Preliminary Design Engineering/MEPA Review
 - Issue RFQ: Mid 2019
 - Issue RFP: Late 2019
 - Notice to Proceed: Early 2020



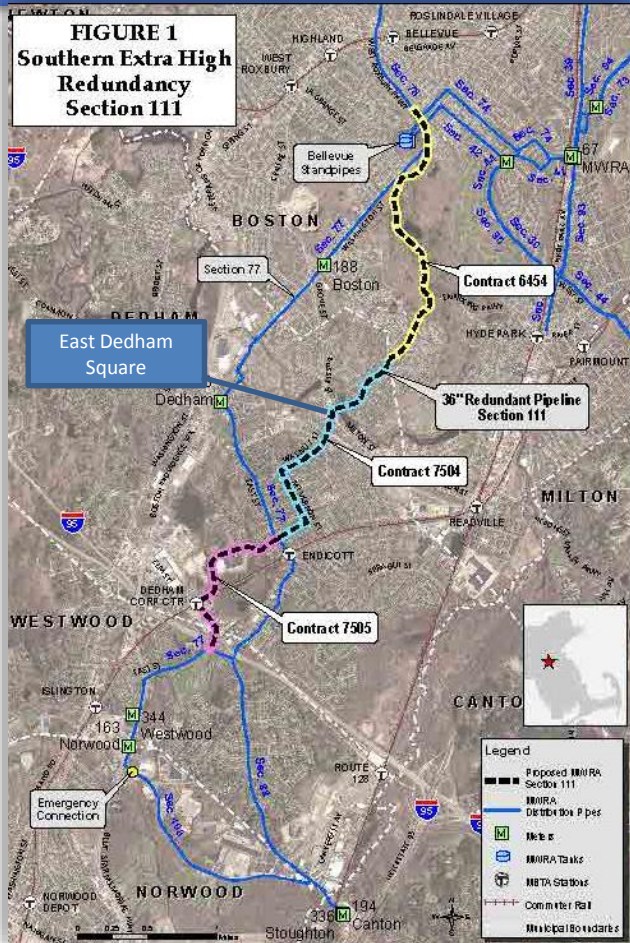


***Southern Extra High Pipeline – Dedham North
Contract 7504, Change Order 6***

March 20, 2019



Southern Extra High Redundancy Project



CONTRACT 1

Approx. 11,000 LF
NTP 7/2016

CONTRACT 2

Approx. 10,000 LF
NTP 10/2017

CONTRACT 3

Approx. 6,800 LF
NTP 8/2018



Excavation at East Dedham Square





Cutting Dedham/Westwood 12" Water Main in East Dedham Square





Close-up of Un-restrained Dedham/Westwood Pipe





Reinstalled Dedham/Westwood 12" Water Main





Installing a Typical Bend







MWRA Retirement System Update



March 20, 2019



Introduction

- Retirement System was created in MWRA's Enabling Act in 1984
- Three members expanded to Five in 2006
 - Secretary of MWRA Board of Directors – Andrew Papastergion
 - Appointment by MWRA Board of Directors – Thomas Durkin
 - Elected by membership – James Flemming
 - Elected by membership – Kevin McKenna
 - Non-member elected by four – Frank Zecha



Number of Retired participants and beneficiaries	582
Number of Inactive vested participants	42
Number of inactive participants due a refund of employee contributions	64
Number of active participants	1,100

as of 1/1/2018

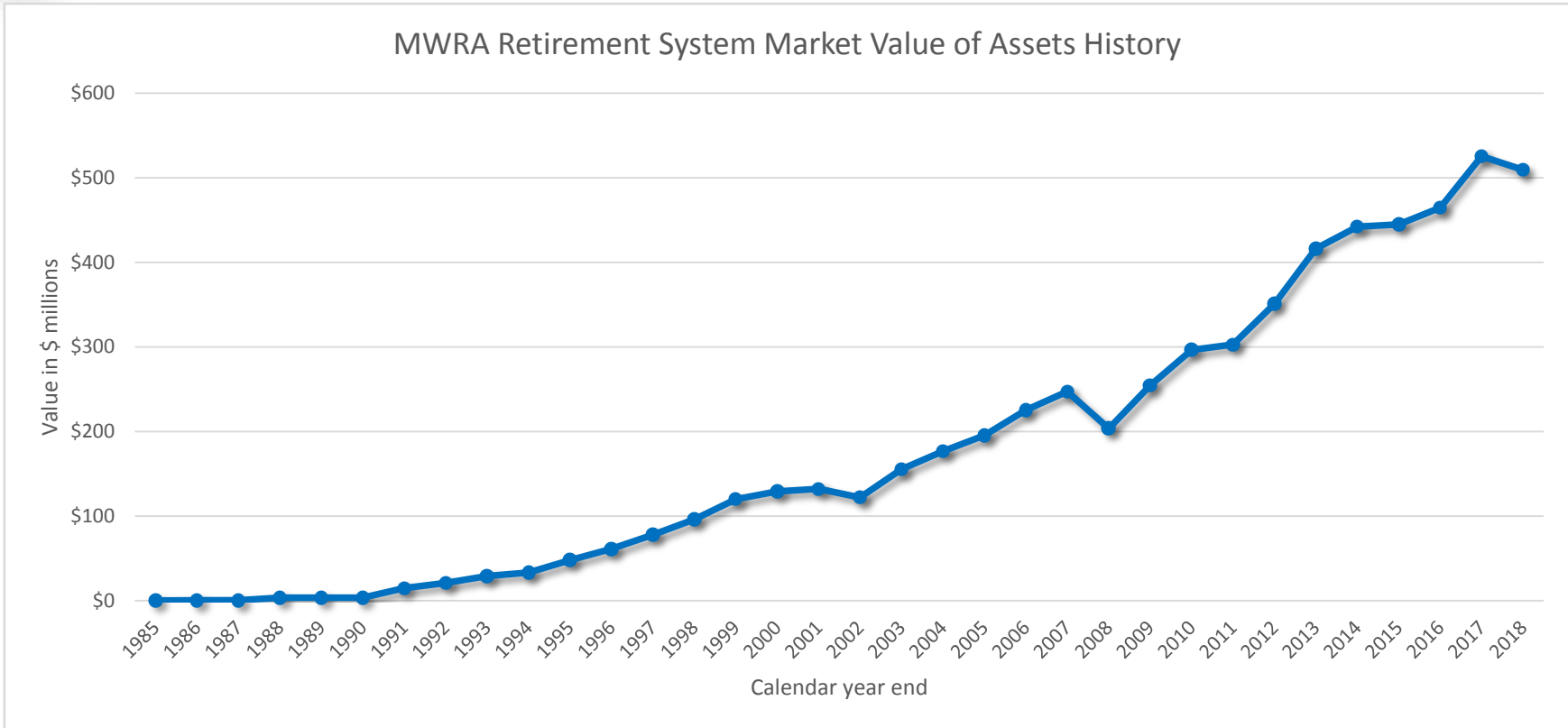
Number of MWRA employees in State (MDC) Retirement System	43
---	----

as of 3/11/2019



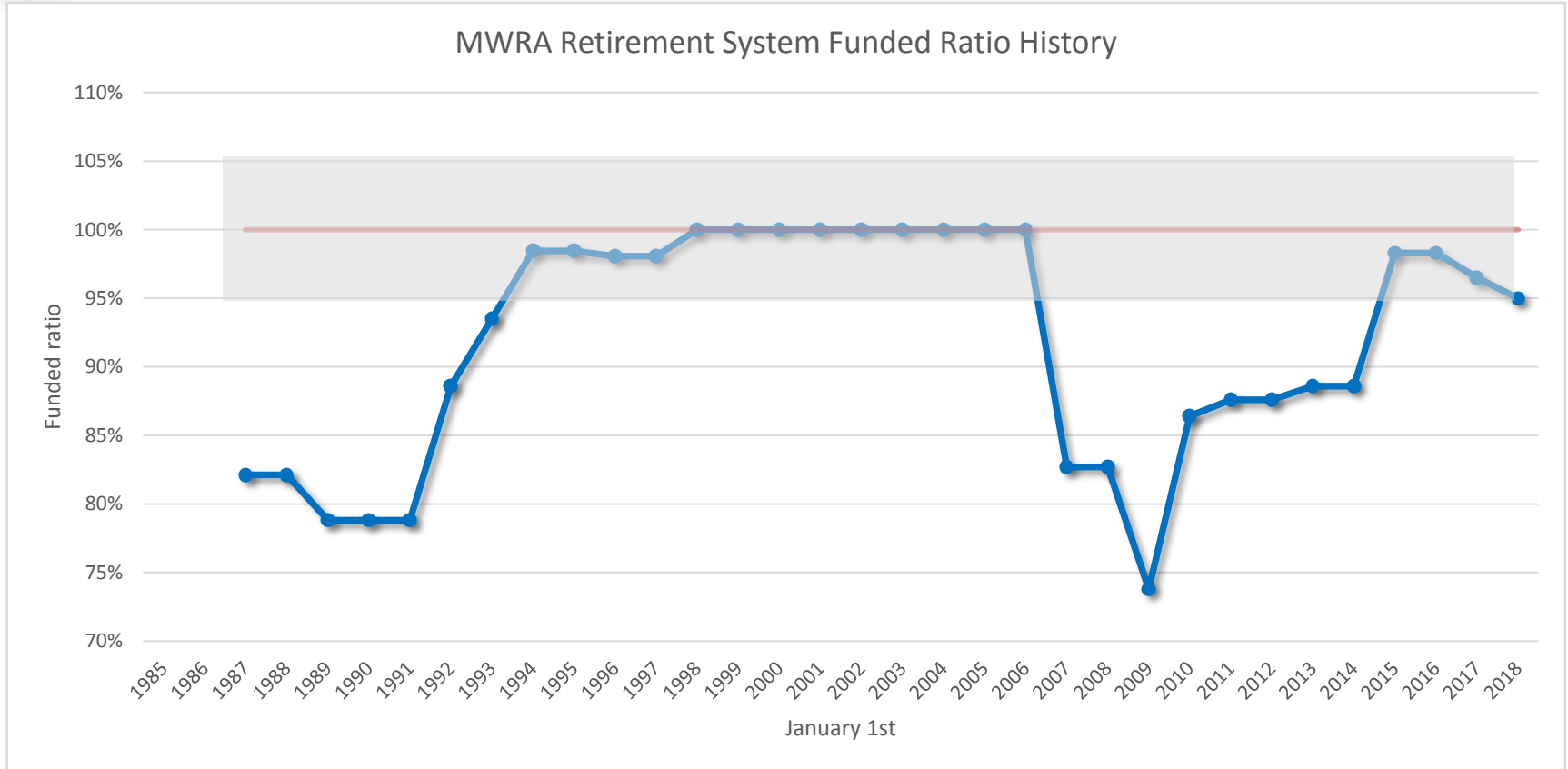
Market Value

MWRA Retirement System Market Value of Assets History





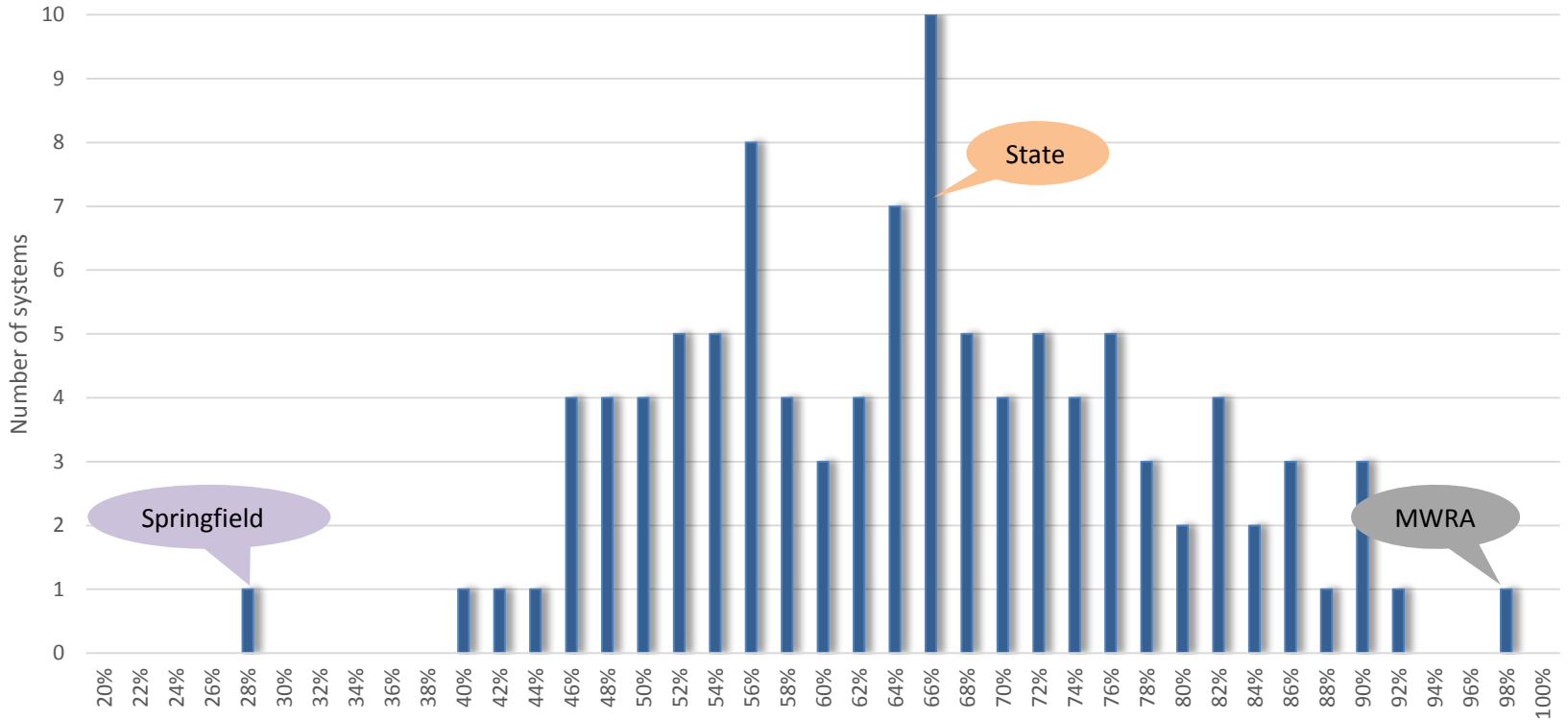
Funded Ratio





Funding Ratio

Funding Ratios of Massachusetts Retirement Systems
based on PERAC Investment report 2017

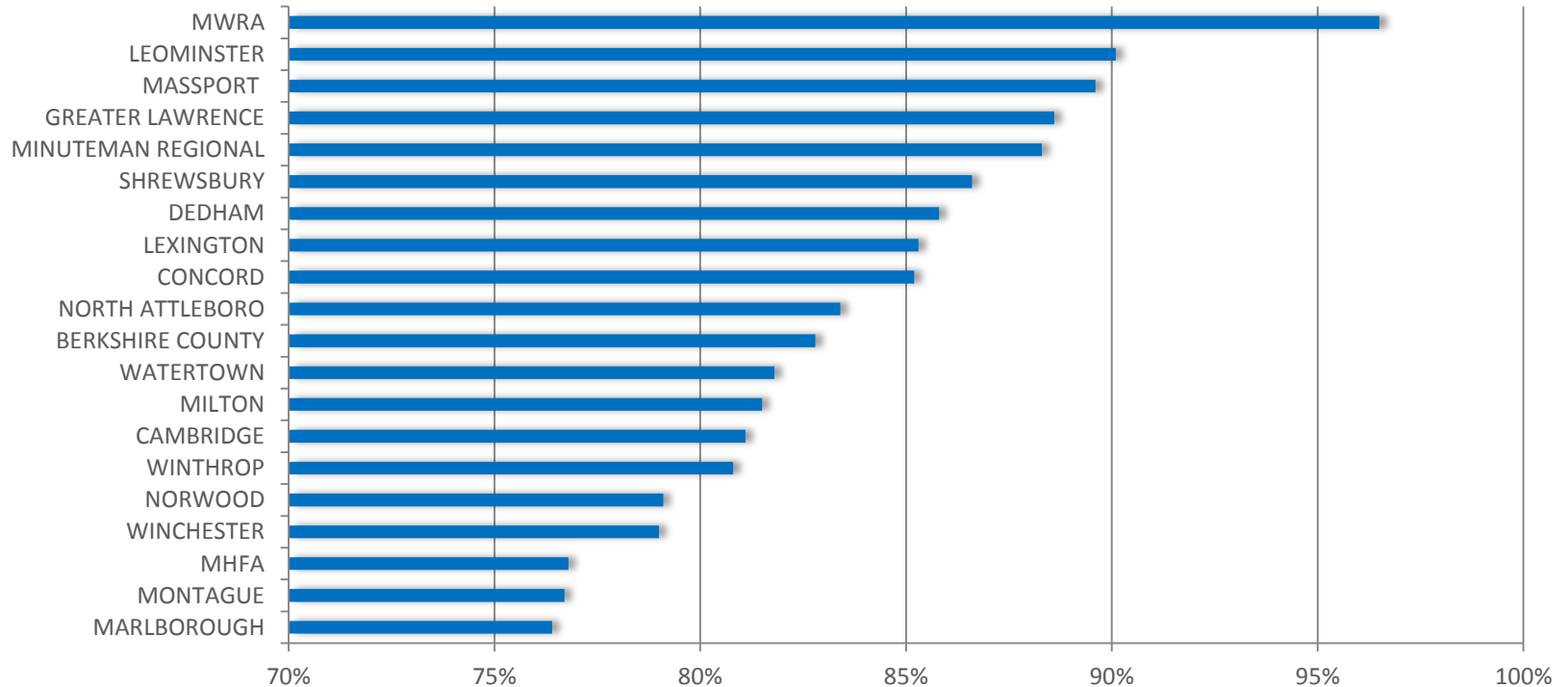




Funding Ratio

Top 20 Funded Massachusetts Retirement Systems

based on PERAC Investment report 2017





- New England Pension Consultants
 - Makes recommendations on asset allocations
 - Facilitates competitive procurement of investment manager services
 - Monitors and reports on investment performance





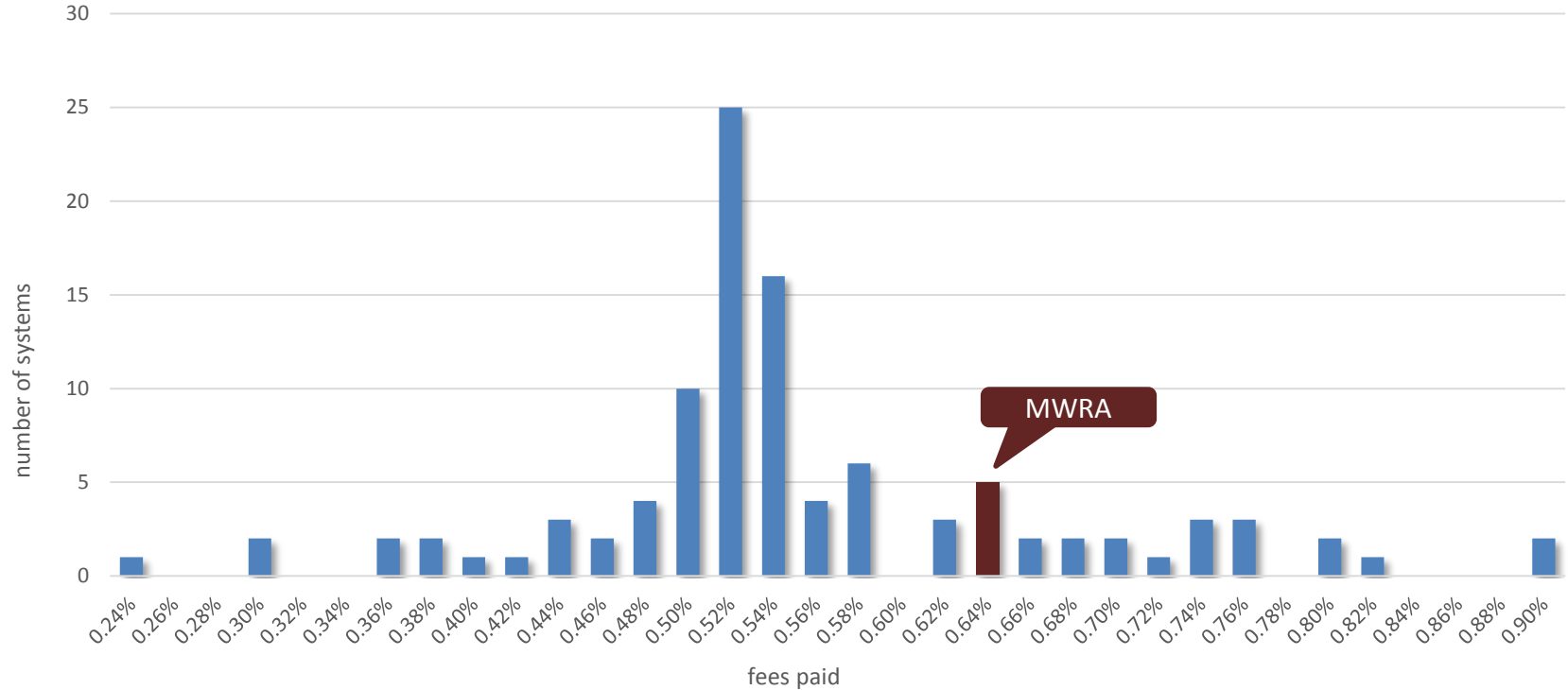
- Fees are paid to the investment managers based on complexity
 - Index Fund Manager e.g. Rhumblin S&P 500 Index Fund
 - Replicate index
 - 0.05%
 - Private Equity Manager e.g. Foundry Venture Capital 2007, L.P.
 - Develop expertise in specific industry
 - Search for opportunities to invest
 - Mentor entrepreneurs / serve on corporate board
 - 2.0% plus 20% on profit after 8% return hurdle





Frequency Distribution of Retirement Systems' Fees Paid

based on 2016 PERAC Schedule 7 report

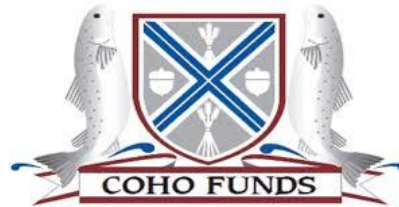




- Domestic Equity

- Large Cap

- *S&P 500, Russell 1000 Value, Russell 1000 Growth*



POLEN | CAPITAL

- Small Cap

- *Russell 2000 Value, Russell 2000 Growth*



LOOMIS | SAYLES



- International Equity

- *MSCI ACWI ex USA, MSCI EAFE Small Cap*

L M C G



BAXTER INVESTMENT MANAGEMENT

Trusted Investors Since 1924



- Emerging Markets Equity
 - *MSCI Emerging Markets*

L M C G



- Fixed Income

- *BBgBarc US Aggregate TR and BBgBarc US High Yield TR, BBgBarc US TIPS TR*



LORD ABBETT®



LOOMIS | SAYLES



- Hedge Funds
 - *HFRI Fund of Funds Composite Index*

CORBIN
Capital Partners



En**T**rustPermal



- Real estate
 - *NCREIF Property Index*

Morgan Stanley

Landmark Investments



Mesirow Financial[®]

 **CERBERUS**
CAPITAL MANAGEMENT, L.P.

 **TERRACAP**

TA Realty



- Private Equity

- *Cambridge Associates US All PE and NASDAQ W/O Income*



Landmark Investments





- **Private Equity Cont.**

- *Cambridge Associates US All PE and NASDAQ W/O Income*

Kayne Anderson

Capital Advisors, L.P.



PINEBRIDGE
INVESTMENTS

J.F. Lehman
& Company

Park
Square

IRONSIDES Partners LLC

PRIVATE
ADVISOR
GROUP
REGISTERED INVESTMENT ADVISOR



- **Balanced**

- *65% MSCI ACWI (Net) / 35% BBgBarc Aggregate, PIMCO All Asset Index, 60% MSCI ACWI (Net) / 40% FTSE WGBI and ICE BofAML 91 Days T-Bills TR*

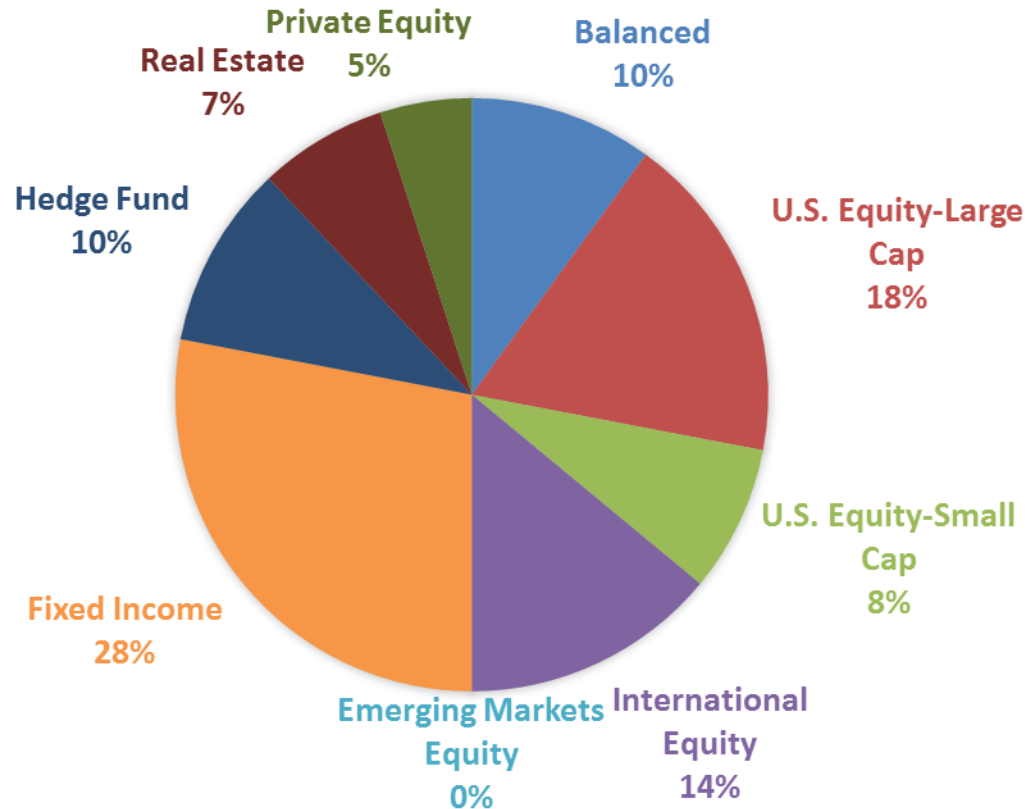


P I M C O



Asset Allocation

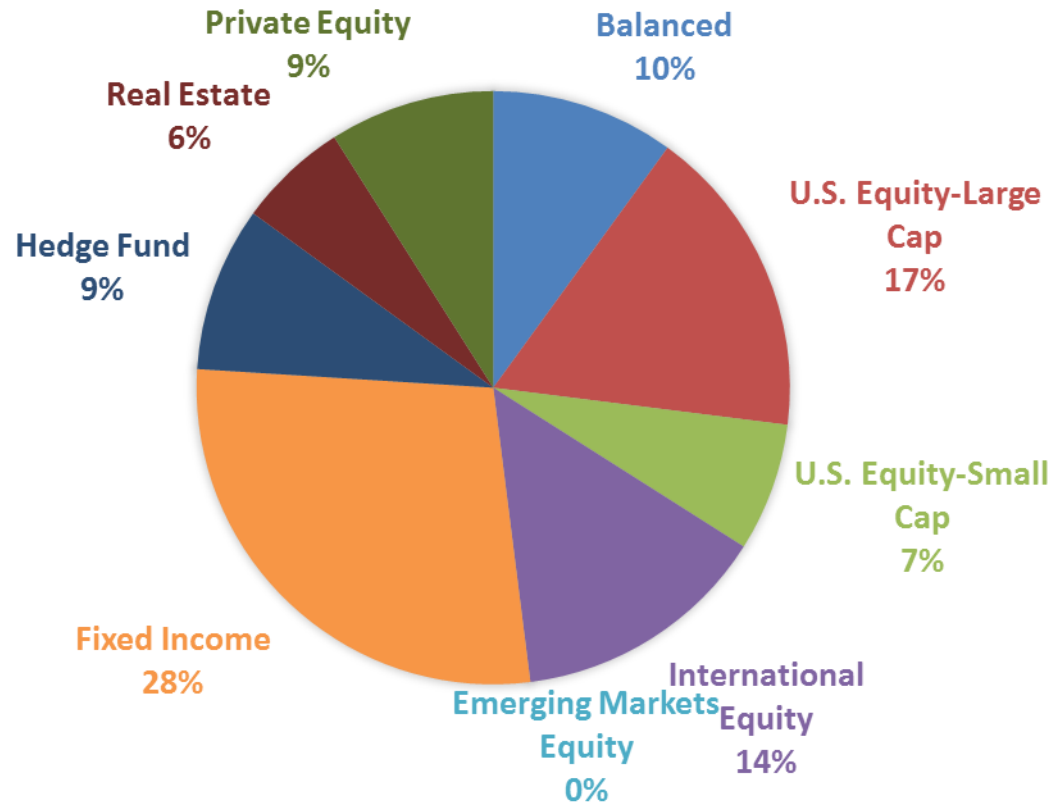
2012





Asset Allocation

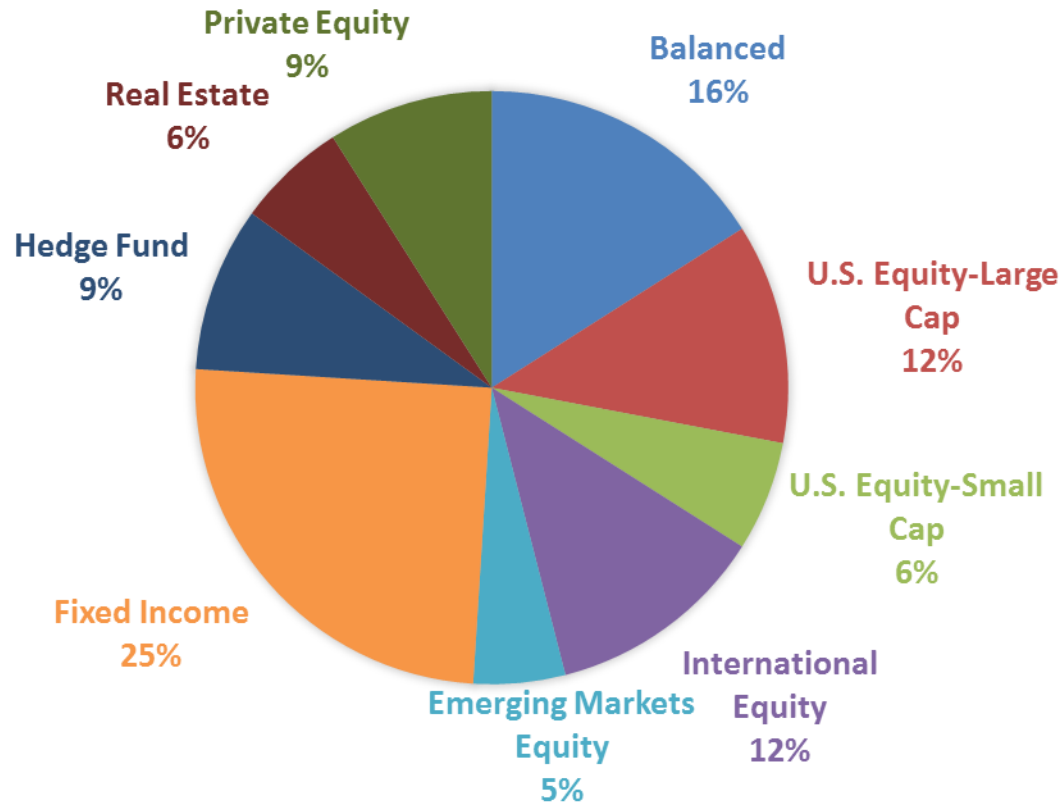
2013





Asset Allocation

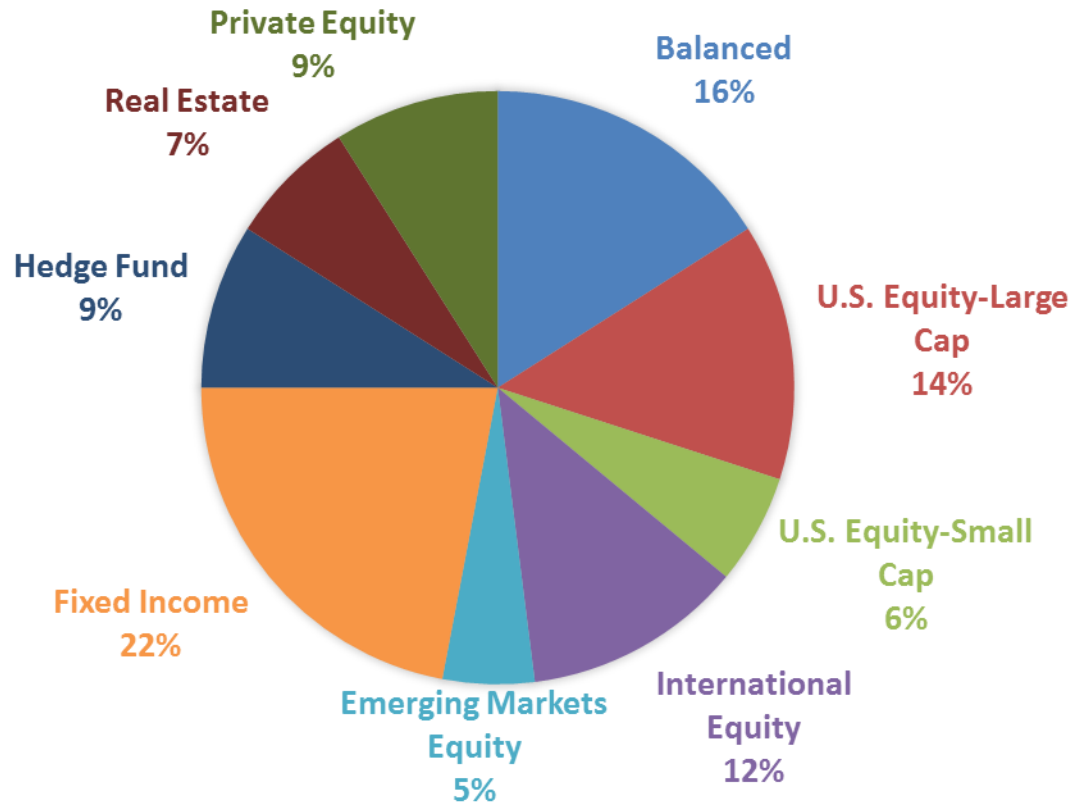
2014





Asset Allocation

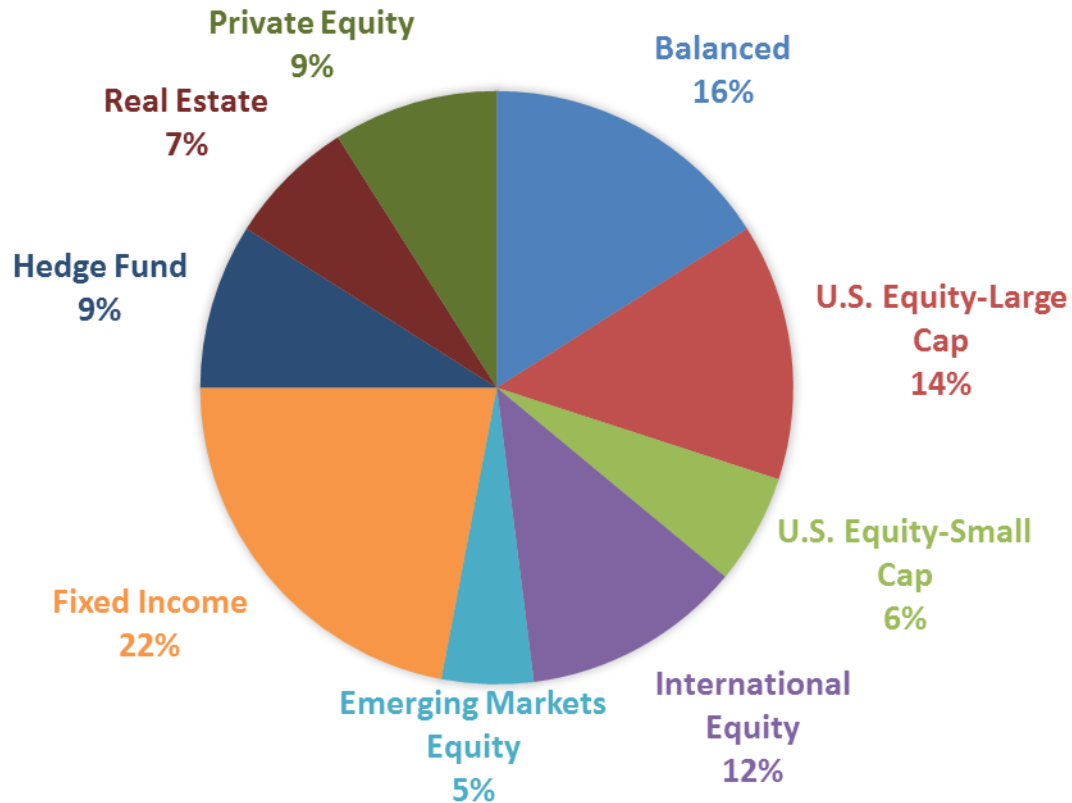
2015





Asset Allocation

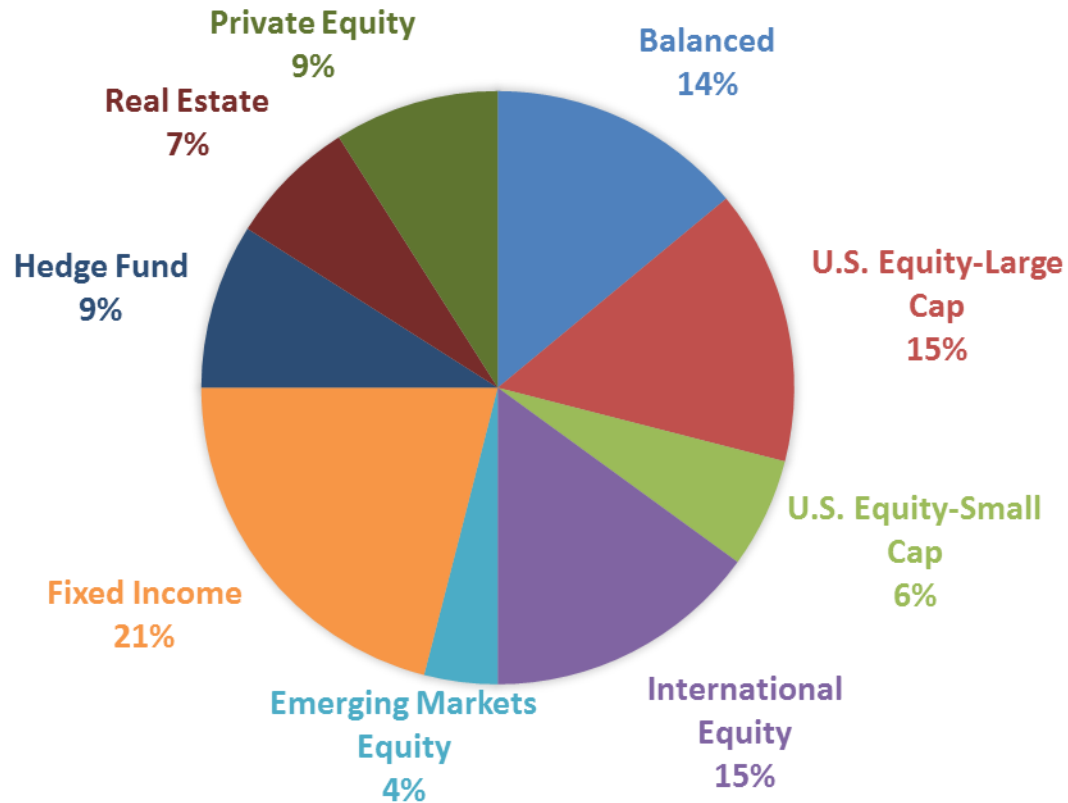
2016





Asset Allocation

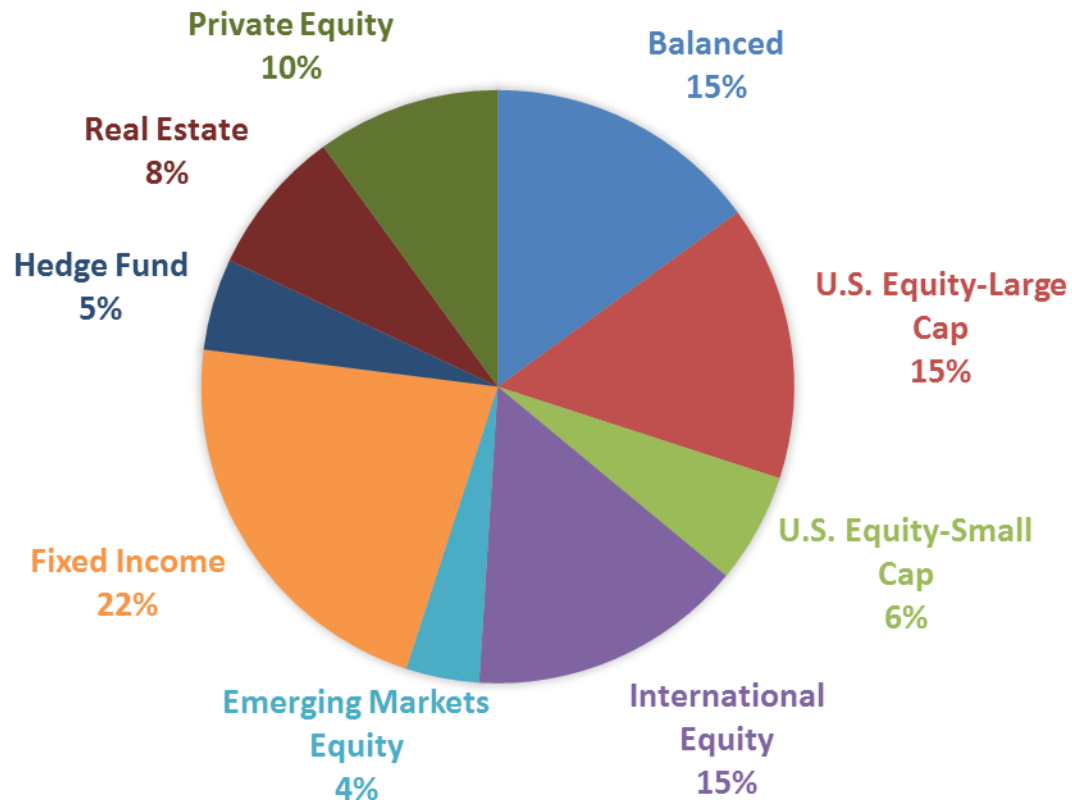
2017





Asset Allocation

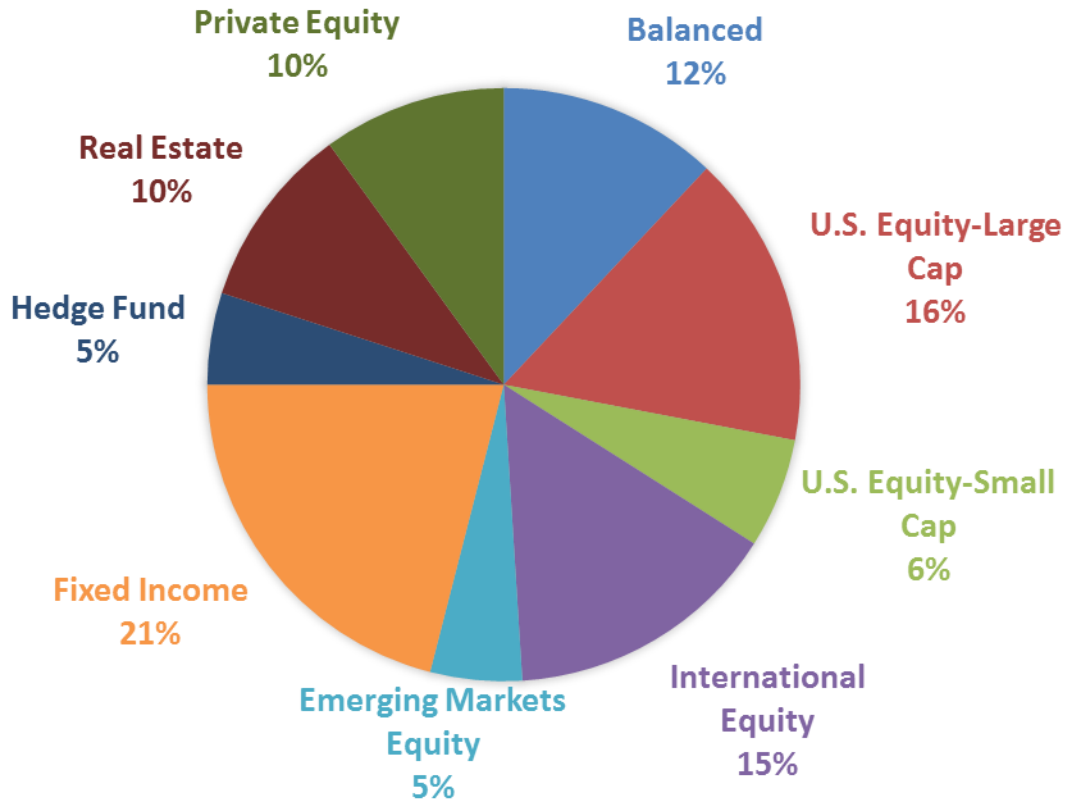
2018





Asset Allocation

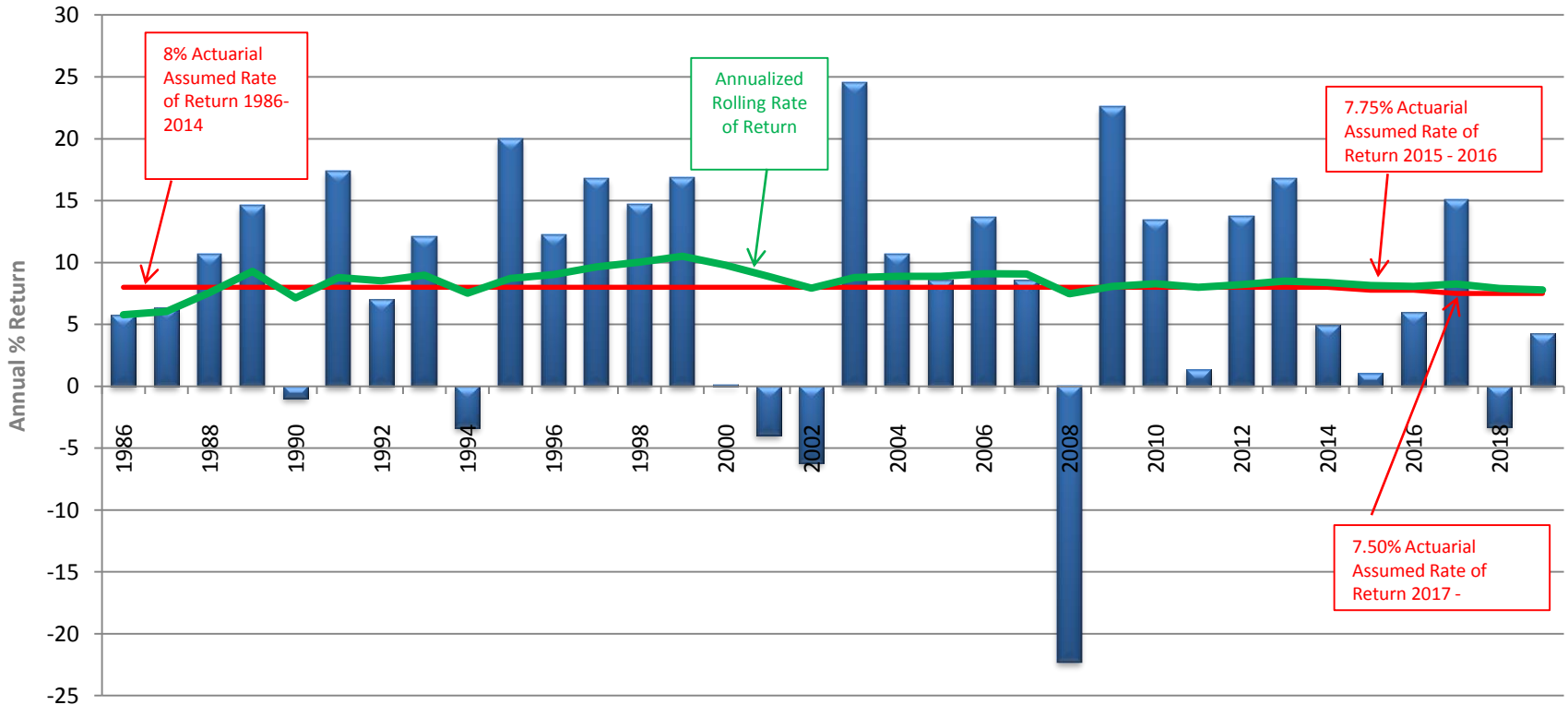
2019





Historic Performance

MWRA Retirement System Investment Performance Review





Relative Performance as of 2017 PERAC Annual Report

System	1yr	5yr	10yr	32yrs
 MWRA Employees' Retirement System	15.05%	8.60%	6.54%	8.27%
 PENSION RESERVES INVESTMENT MANAGEMENT BOARD	17.69%	9.89%	5.57%	9.69%



Sharpe Ratio

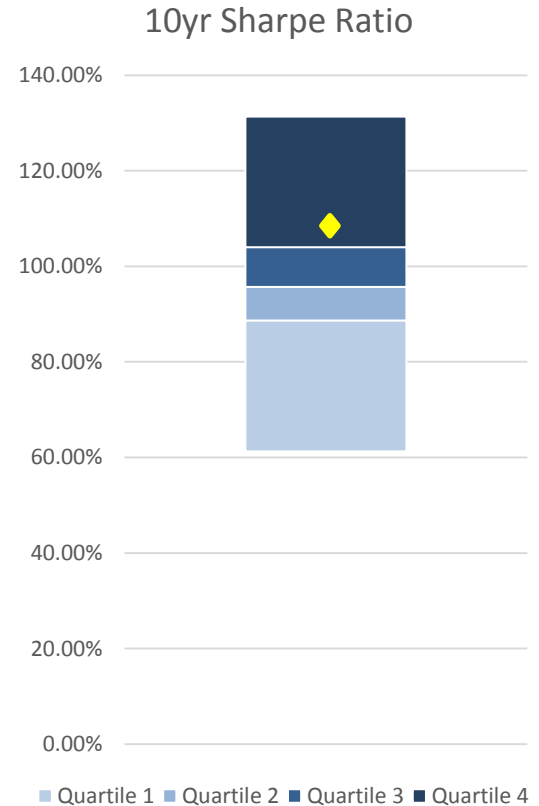
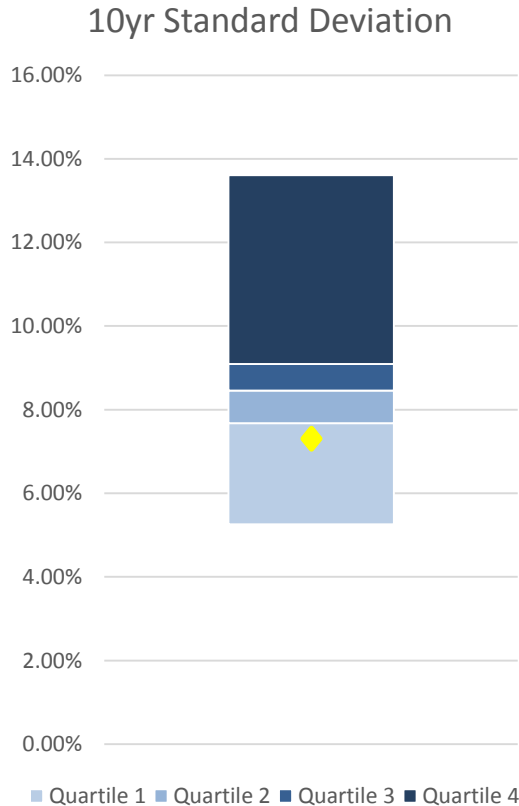
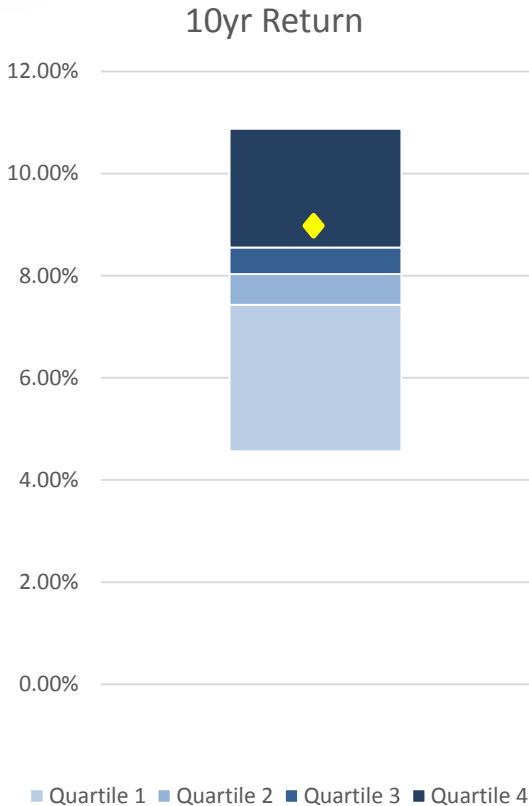
Measures how an investor is compensated for the risk taken

	Investment A	Investment B
Average Return in Excess of Risk-Free return	4.8%	6.5%
Volatility measured by Standard Deviation	8.0%	12.0%
Sharpe Ratio	.594	.542

Preferred



Performance Among Peers

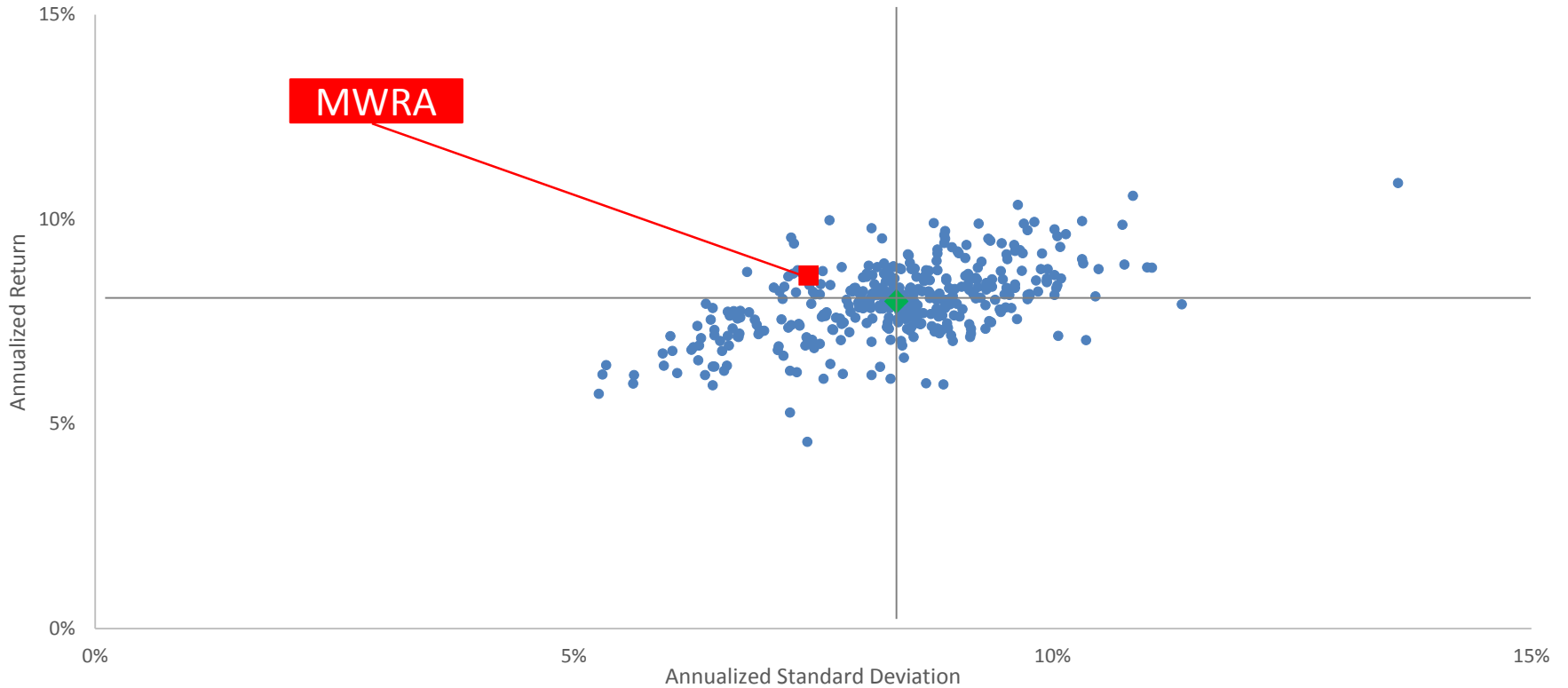


◆ MWRA



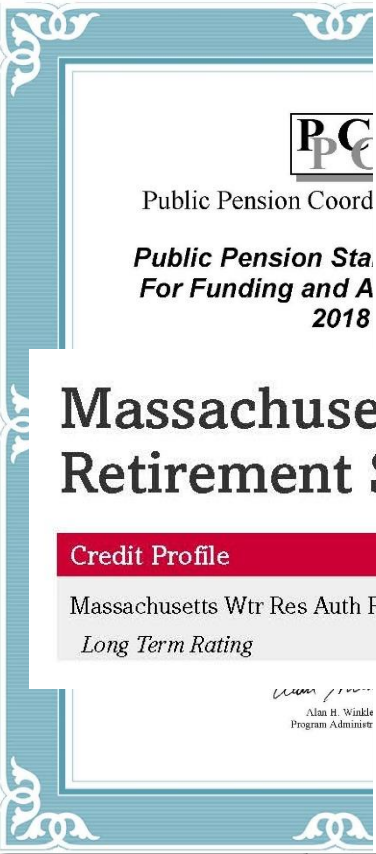
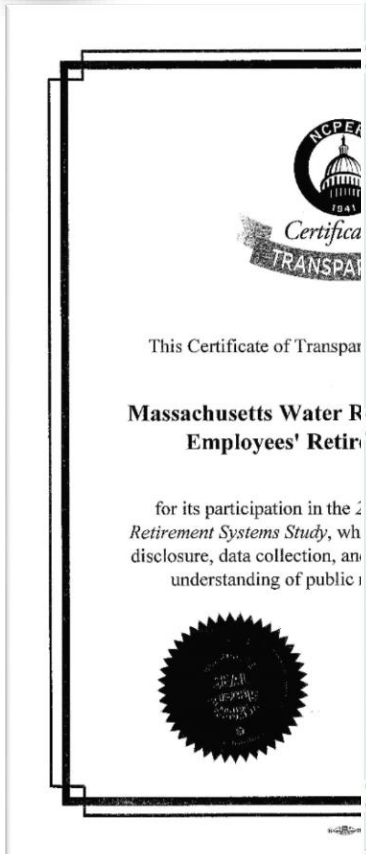
Performance Among Peers

10 Years Ending December 31, 2018





Conclusion




 Government Finance Officers Association
 Certificate of Achievement
 for Excellence
 in Financial

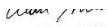
STANDARD
& POOR'S

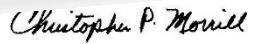
Massachusetts Water Resources Authority Retirement System; Water/Sewer

Credit Profile

Massachusetts Wtr Res Auth Retirement Sy
 Long Term Rating

AAA/Stable rated


 Alan H. Winkle
 Program Administ


 Christopher P. Morill
 Executive Director/CEO



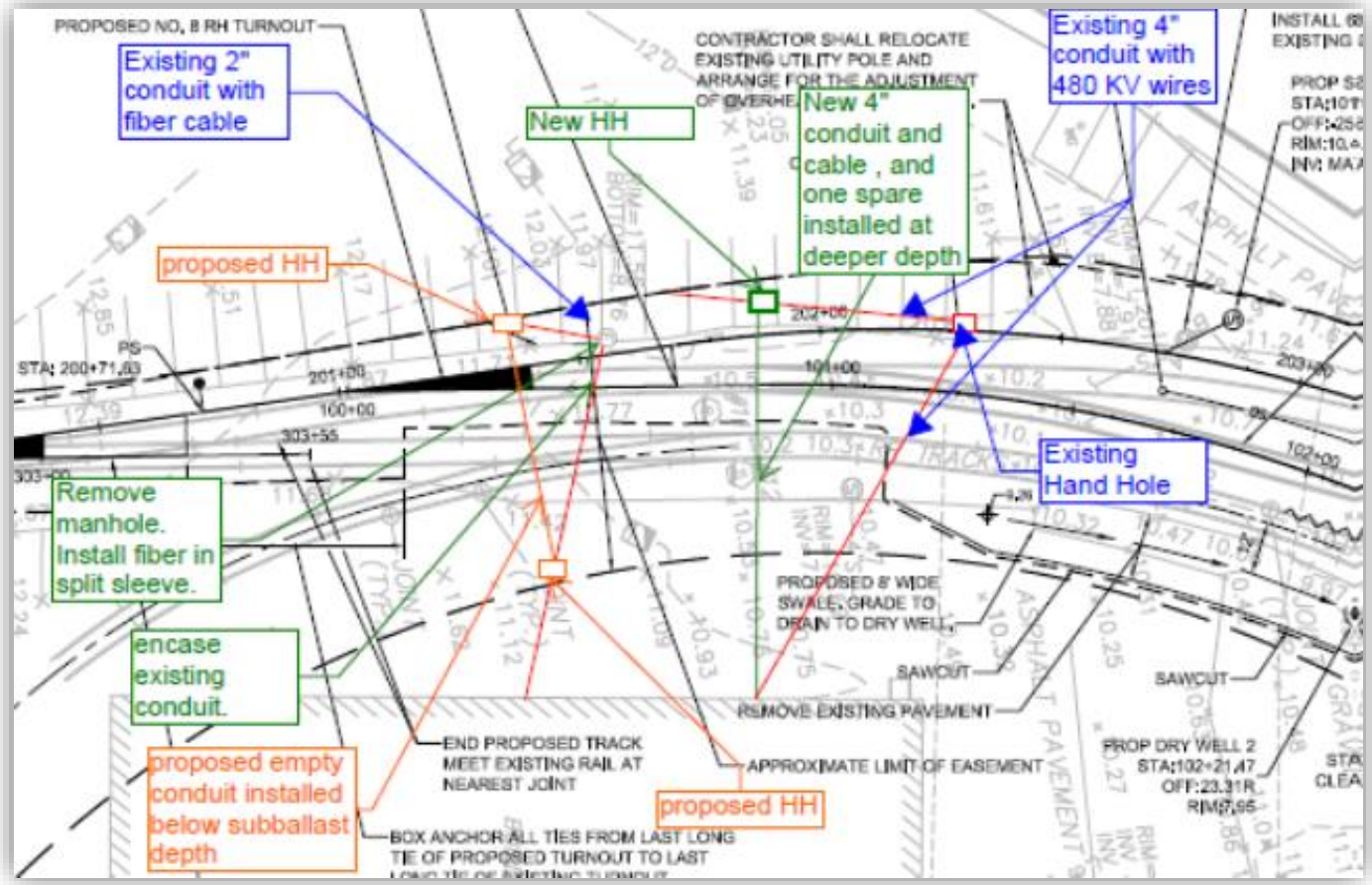


***Fore River Railroad Main Line Adjustment
Contract FRR32, Change Order 2***

March 20, 2019



Fore River Railroad Main Line Adjustment





Fore River Railroad Main Line Adjustment



- Both the fiber optic cable and electrical service were installed in abandoned shipyard pipes





Update on Quincy Sewer Issues

March 20, 2019

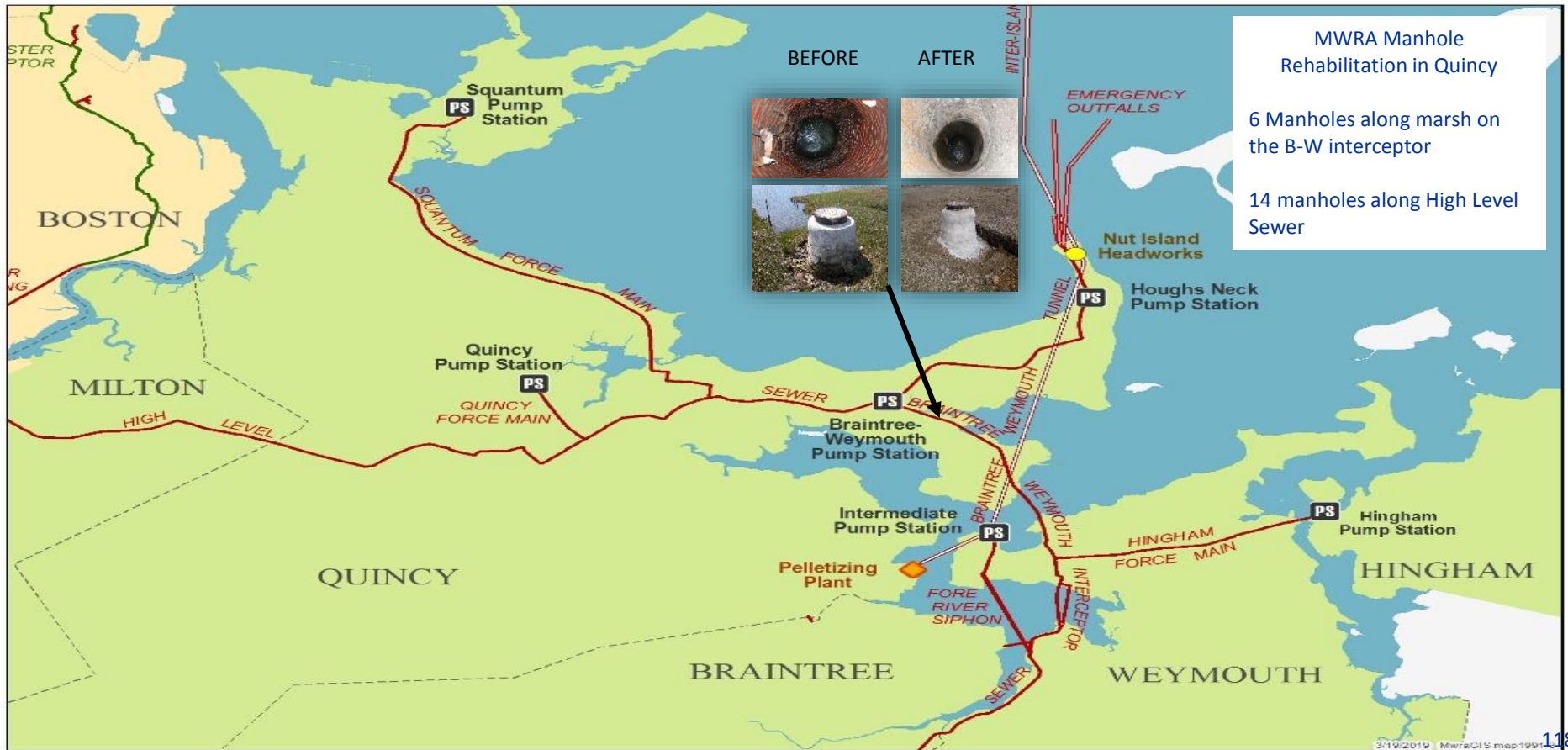


MWRA Southern Sewer System





Manhole Rehabilitation in Quincy



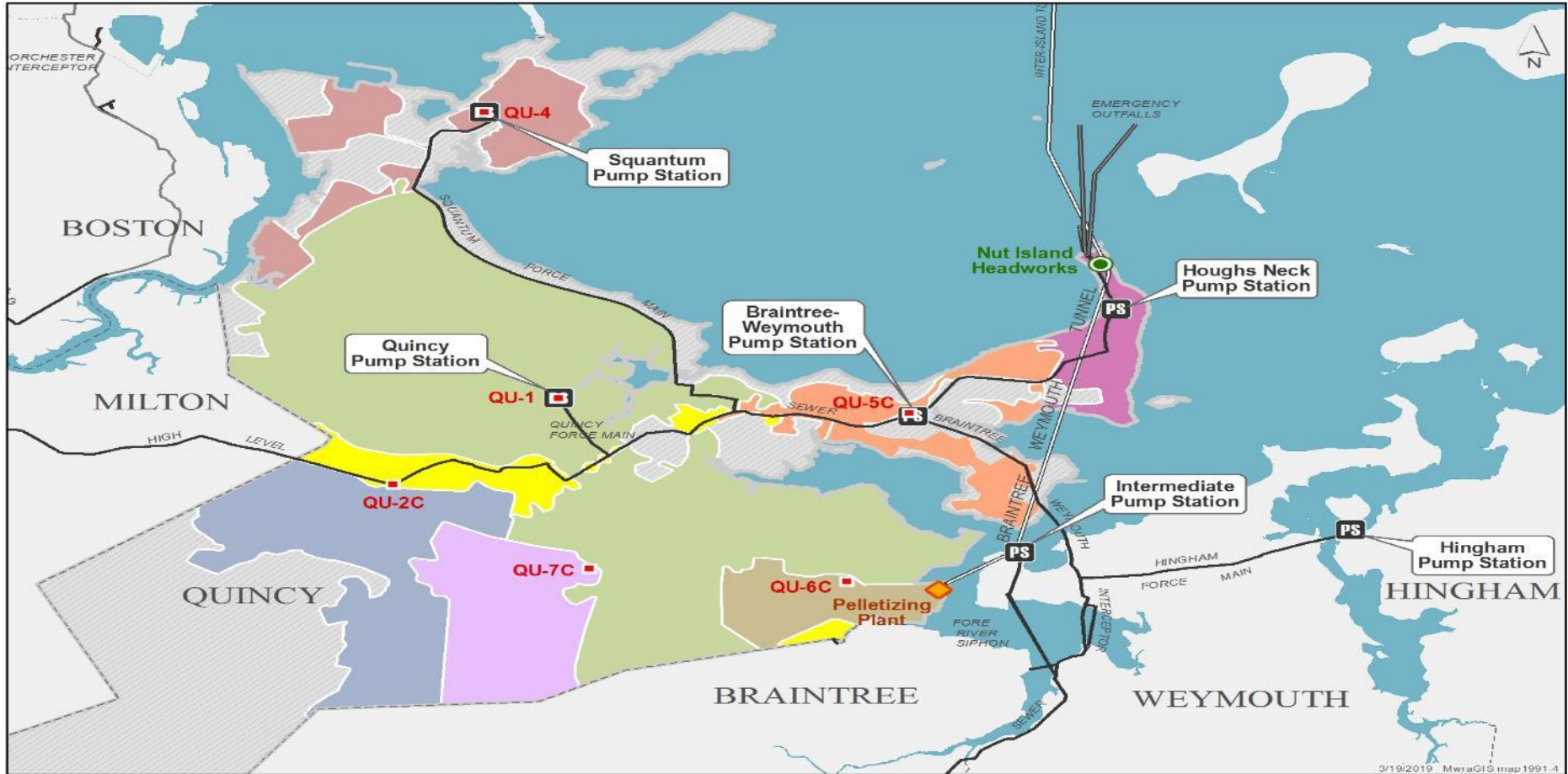


In House Manhole Structure Replacement Section 622 – Braintree Weymouth Interceptor, Station 13+95, Quincy





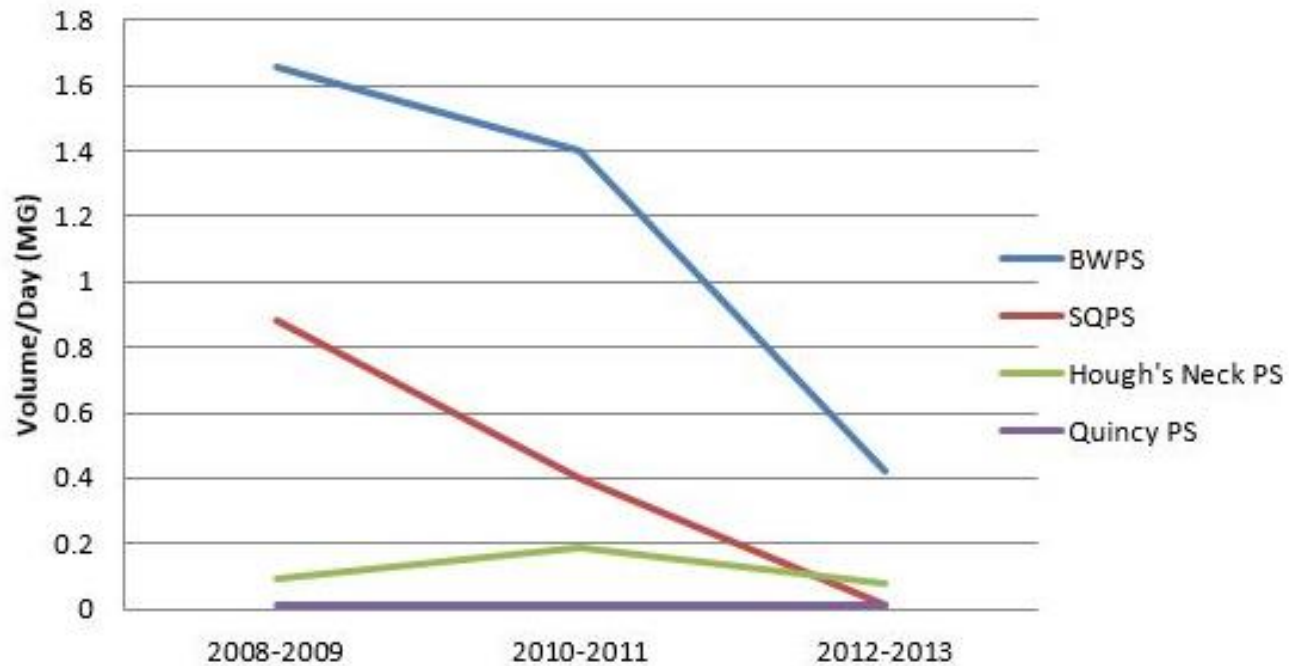
Quincy Sewer System





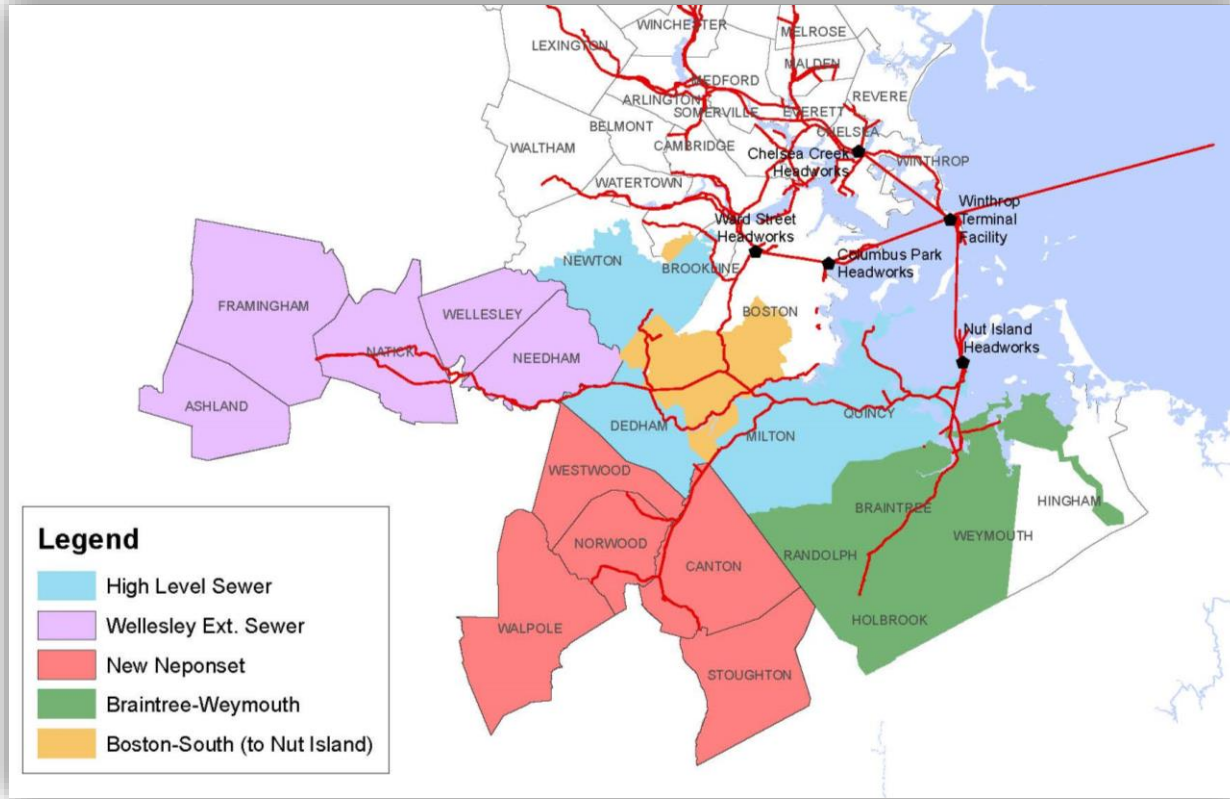
Results from 2013 Tidal Inflow Study

Pump Stations in Quincy Average Daily Volume of Tidal I/I





South System by Subarea - % Change in Wastewater Flow - 20 Year Snapshot



- High Level Sewer: - 24%
Newton-South, Brookline-South, Dedham, Milton, Quincy
- Wellesley Extension Sewer: - 22%
Ashland, Framingham, Natick, Needham, Wellesley
- New Neponset Sewer: - 11%
Canton, Norwood, Stoughton, Walpole, Westwood
- Braintree/Weymouth Sewer: - 4%
Braintree, Hingham, Holbrook, Randolph, Weymouth
- Boston-South: + 6%





***Section 4 - Webster Avenue Pipe and
Utility Bridge Replacement***

March 20, 2019

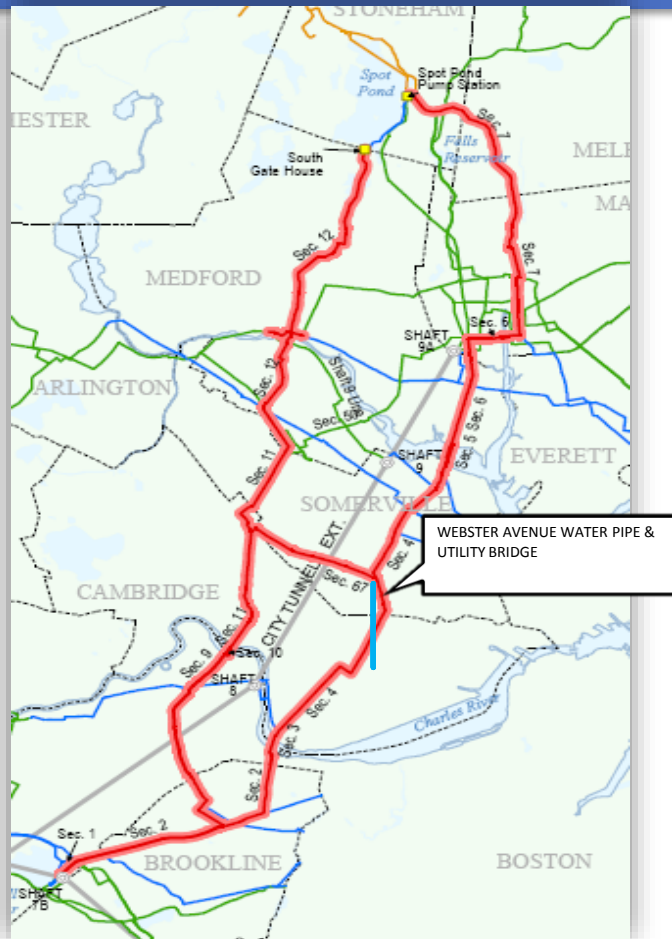


New 48-inch Pipe And Utility Bridge





Northern Low Service System





Pipe On Bridge Crossing MBTA Commuter Tracks





Vertical Mechanical Joint Bends With Megalug Restraints





HP LOK Pipe by U.S. Pipe





Bent HP LOK Ring From Pressure Test 1



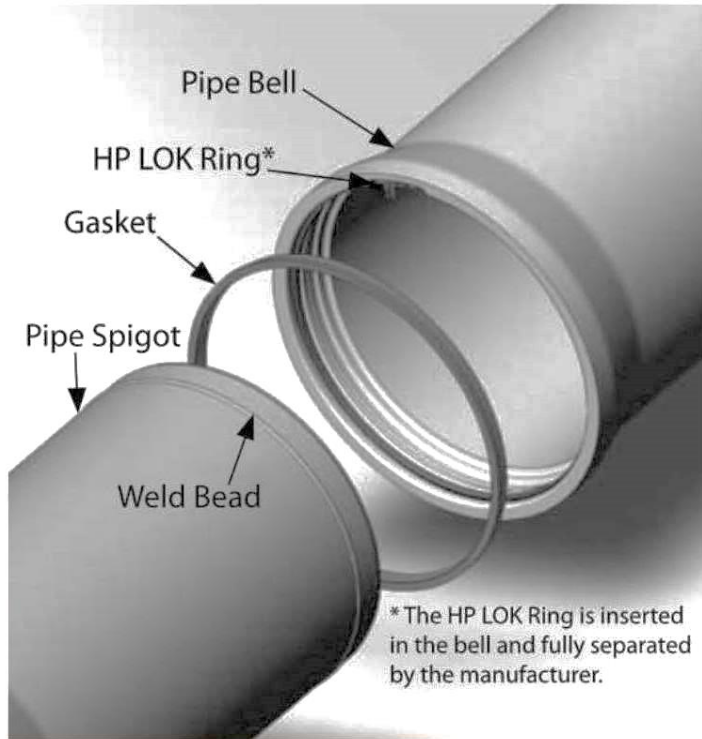


Bent HP LOK Ring After Disassembly

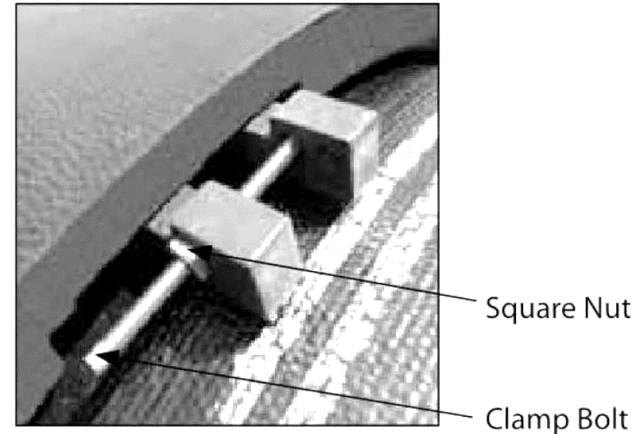




HP LOK Joint Components



a) Components of HP LOK Joint



b). Final Assembled HP LOK Joint

Source: US Pipe and Foundry Company, LLC (2013). "HP-LOK Restrained Pipe", 2013 Edition.



Redesign Drawing

