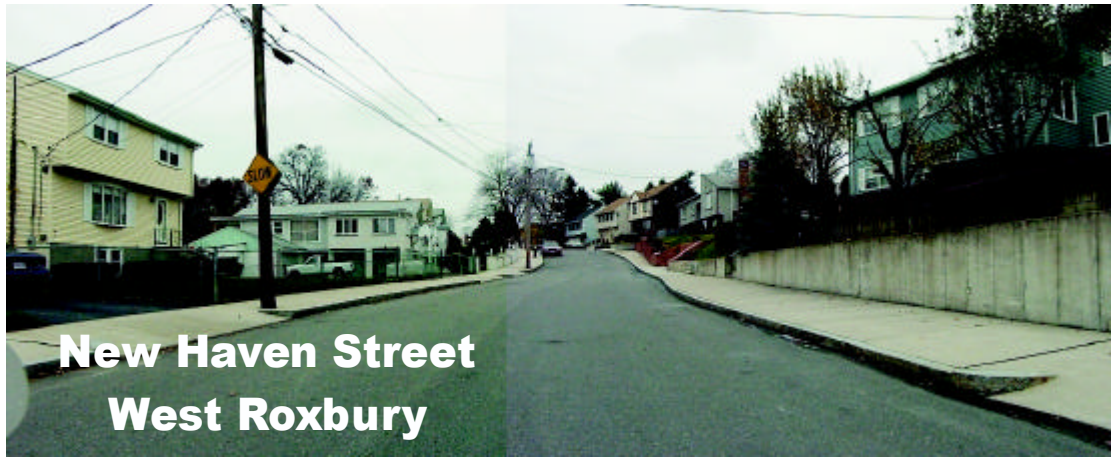
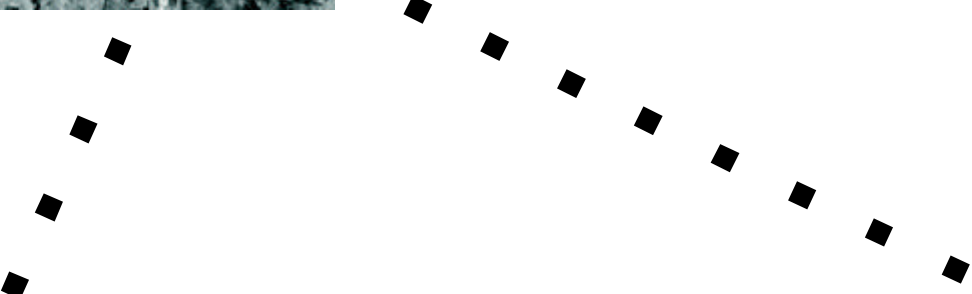
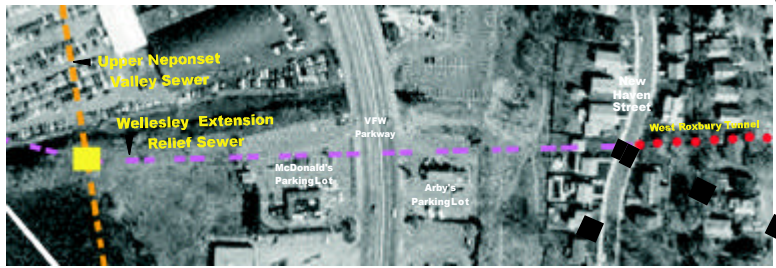
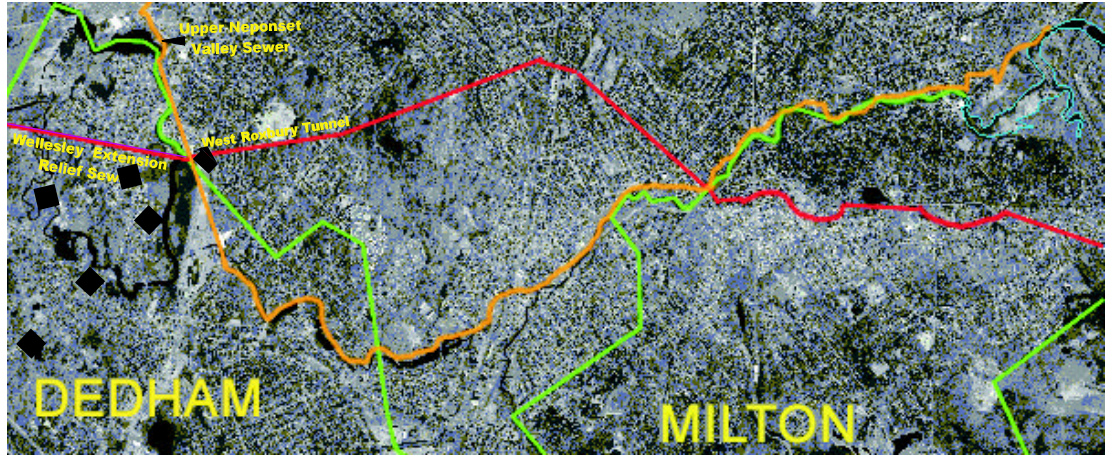
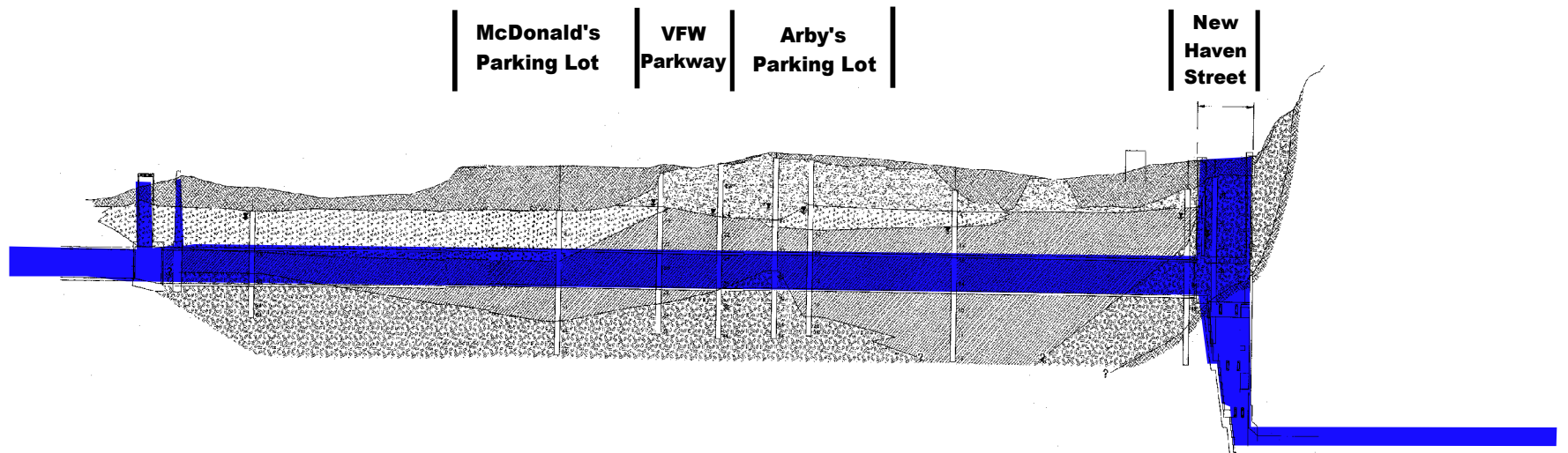


**Sliplining of the Wellesley Extension  
Relief Sewer, Re-construction of the  
New Haven Street Drop Chamber  
and the Restoration of West Roxbury Tunnel**



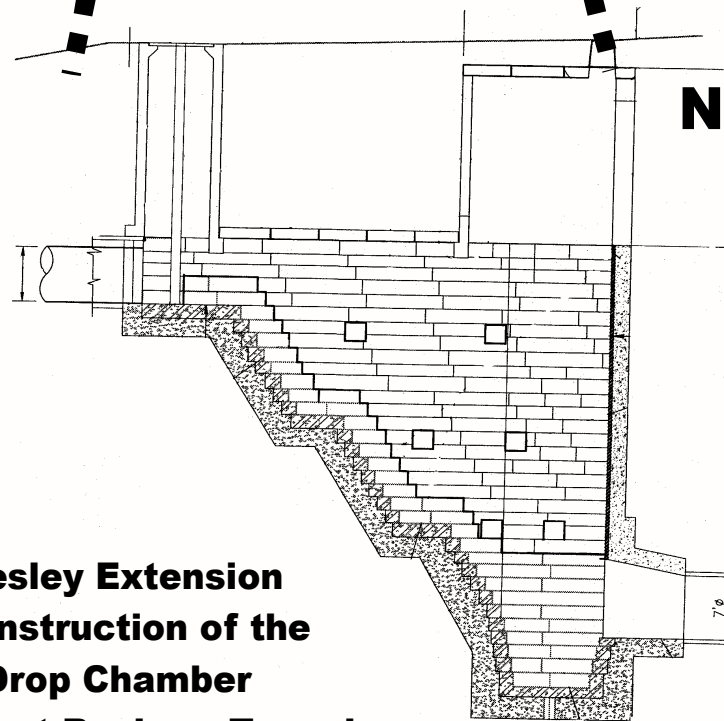


**Sliplining of the Wellesley Extension Relief Sewer,  
Re-construction of the New Haven Street Drop Chamber  
and the Restoration of West Roxbury Tunnel**



## New Haven Street Drop Chamber

Wellesley Extension Relief Sewer



West Roxbury Tunnel



**Sliplining of the Wellesley Extension Relief Sewer, Re-construction of the New Haven Street Drop Chamber and the Restoration of West Roxbury Tunnel**

**Sliplining of the Wellesley Extension Relief Sewer,  
Re-construction of the New Haven Street Drop Chamber  
and the Restoration of West Roxbury Tunnel**



Photo #106:  
**Section 137A, station 66+60, 7-foot diameter sewer, West Roxbury-East end of "West Roxbury Tunnel" Looking east toward Grew Avenue. Top of Pipe 17 feet below ground. Very good condition. No significant corrosion present.**

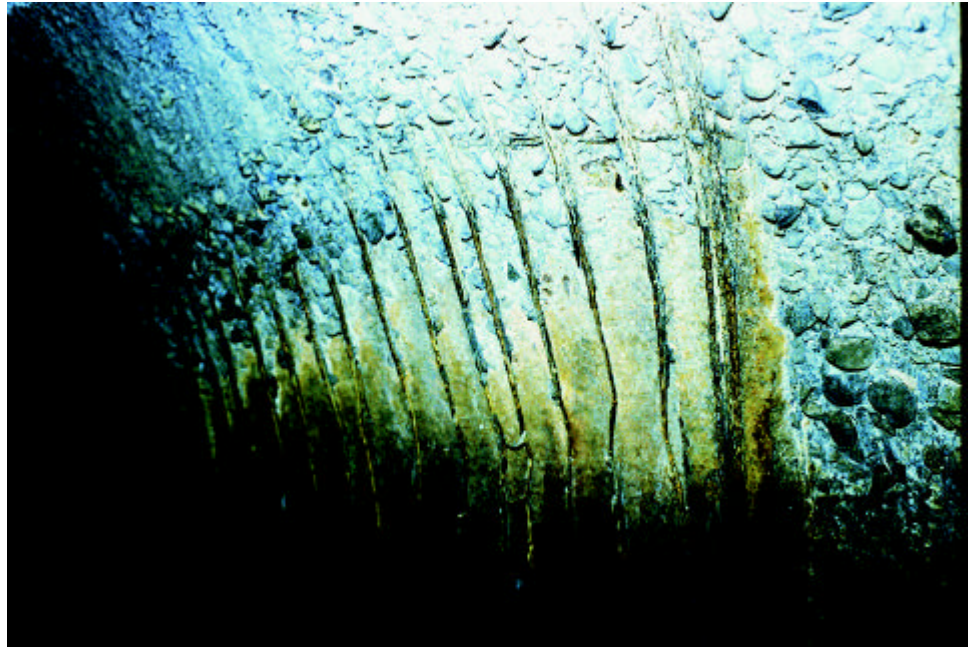


Photo #04:  
**Section 138, station 201+73, 7-foot diameter sewer, West Roxbury-Open space behind McDonalds parking lot. Top of pipe 14 feet below ground. Photo shows significant deterioration of concrete and steel reinforcing.**

**Sliplining of the Wellesley Extension Relief Sewer,  
Re-construction of the New Haven Street Drop Chamber  
and the Restoration of West Roxbury Tunnel**



Photo #06:  
**Section 138, station 200+60, 7-foot diameter sewer, West Roxbury - Open space behind McDonalds parking lot. Top of pipe 12 feet below ground. Photo shows significant deterioration of concrete. Reinforcing steel completely compromised.**



Photo #07:  
**Section 138, station 200+88, 7-foot diameter sewer, West Roxbury-Open space behind McDonalds parking lot. Top of pipe 12 - feet below ground. Significant deterioration of concrete and steel reinforcing.**

**Sliplining of the Wellesley Extension Relief Sewer,  
Re-construction of the New Haven Street Drop Chamber  
and the Restoration of West Roxbury Tunnel**

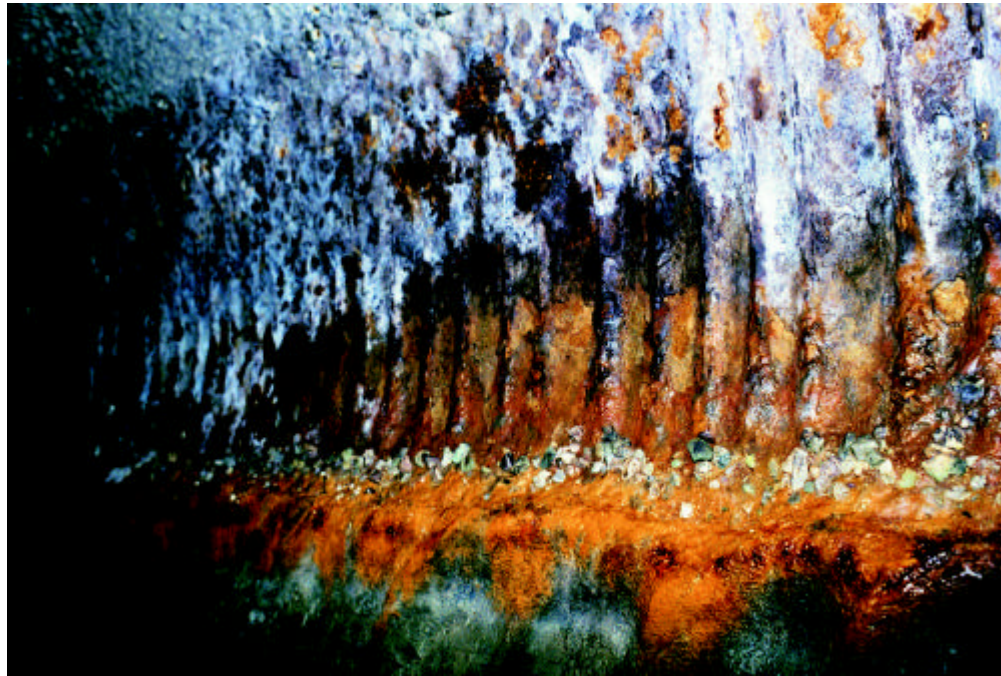


Photo #11:  
**Section 138, station 199+23, 7-foot diameter sewer, West Roxbury - Open space at the back edge of McDonalds parking lot. Top of pipe 14 - feet below ground. View of water line. Significant deterioration at air - water interface.**

Photo #13:  
**Section 138, station 198+63, 7-foot diameter sewer, West Roxbury-Below McDonalds parking lot. Top of pipe 17 - feet below surface. Debris at sewer invert. Corrosion above water line.**



**Sliplining of the Wellesley Extension Relief Sewer,  
Re-construction of the New Haven Street Drop Chamber  
and the Restoration of West Roxbury Tunnel**



Photo #34:  
**Section 137 Drop Chamber - Top of  
roof slab 20 feet below New Haven  
Street - Significant deterioration of  
18 - inch roof slab. Steel reinforcing  
severely compromised.**

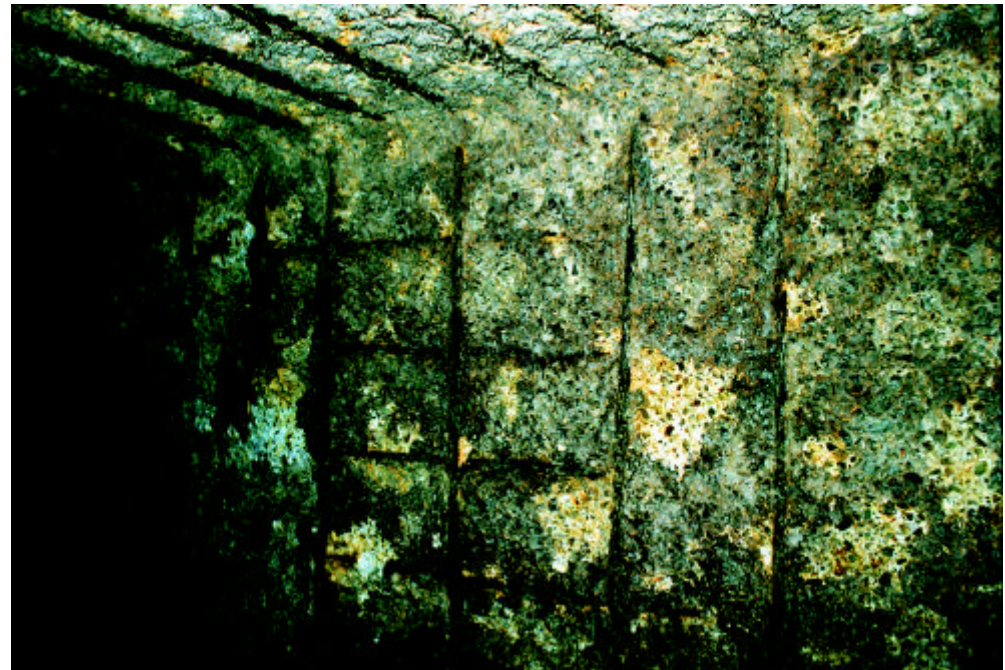


Photo #35:  
**Section 137 Drop Chamber - Top of  
roof slab 20 feet below New Haven  
Street. Significant deterioration of  
roof slab and south wall.**